

MECHANICAL ENGINEERING
ELECTRICAL ENGINEERING
ENERGY CONSERVATION
STRUCTURAL ENGINEERING



INTRODUCTION

W. AND ASSOCIATES's group activities started in early 1965. Group activities were focusing on M&E engineering design services. In 1973, W. AND ASSOCIATES ROP. was then established to be consulting firm specializing in Mechanical, Plumbing, Sanitary, Electrical and Telecommunication .

During Thailand's booming economy, W. AND ASSOCIATES Consultants Co., Ltd. and W. AND ASSOCIATES Designs Co., Ltd. were established to cope with the fast-expanding real estate business. W. AND ASSOCIATES engineers had under taken responsibility of numerous projects for various engineering services, both design and construction supervision. Engineering services include electrical power, lighting, fire alarm system, security system, sound system, telephone system, telecommunication system, building automation system, air-conditioning system, ventilation system, smoke control system, vertical transportation, plumbing system, sanitary system, waste treatment system, computer site support system and other related systems for several major buildings and factories in Thailand.

Moreover, in 1996, W. AND ASSOCIATES has been one of companies approved by Department of Energy Development and Promotion (D.E.D.P.) for being registered as a consultant company in energy conservation program initiated by D.E.D.P. W. AND ASSOCIATES, as a registered consultant company, will be auditing the designated buildings and factories, which cover thousands buildings nationwide, to improve building's energy

In 2012 the group has begun the service in Civil/Structural Engineering discipline with all engineering disciplines included in one umbrella, the group now is focusing on providing one-stop, all-in-one engineering service for the client.

MESSAGE FROM PARTNERS

Our company is one of the earliest Thai owned consulting firms specializing in Building System (1965) / Civil and Structural Engineering Designs (2012). From the beginning, our company's philosophy has always been ethical practices with good and practical engineering designs. Our design principles for all of our projects are functionally advanced and economical designs meeting the present and future requirements of our clients, energy saving, ease of operation and maintenance. We will do our utmost to offer the designs which best serve our clients.

BOARD OF DIRECTORS



WICHAI LAKSANAKORN
Chairman / Co-Founder



WITHU RUKSVANICHPONG
Co-Founder



CHOKEWICHIT LAKSANAKORN
Managing Director

ENGINEERING SERVICES

CIVIL AND STRUCTURAL DESIGN

- 1.1 Structural work
- 1.2 Civil and Infrastructure work
- 1.3 Earthwork
- 1.4 Site Drainage
- 1.5 Investigation of Structural Integrity
- 1.6 Non-Destructive Structural Test

MEP DESIGN

2.1 ELECTRICAL SYSTEMS

- 2.1.1 Power
- 2.1.2 Lighting
- 2.1.3 Grounding
- 2.1.4 Emergency Power

2.2 TELECOMMUNICATION SYSTEM

- 2.2.1 Premise Distribution System
- 2.2.2 PABX
- 2.2.3 Telephone Wiring System
- 2.2.4 High Speed Data Cabling System

2.3 FIRE ALARM SYSTEM

2.4 SECURITY SYSTEM

- 2.4.1 Closed Circuit Television (CCTV)
- 2.4.2 Access Control
- 2.4.3 Burglar Alarm

2.5 AUDIO-VISUAL SYSTEM

- 2.5.1 Master Antenna Television system (MATV)

2.6 VERTICAL TRANSPORTATION SYSTEM

- 2.6.1 Elevators
- 2.6.2 Escalators

2.7 BUILDING AUTOMATION SYSTEM (BAS)

- 2.7.1 Energy Management
- 2.7.2 Comfort Control
- 2.7.3 Maintenance Management

2.8 SANITARY SYSTEM

- 2.8.1 Waste Water Treatment
- 2.8.2 Soil, Waste, Vent piping System
- 2.8.3 Site Drainage System

2.9 AIR CONDITIONING AND VENTILATING SYSTEMS

- 2.9.1 Exhaust and Ventilating System
- 2.9.2 Air-Conditioning System
- 2.9.3 Smoke Control System
- 2.9.4 Clean room System
- 2.9.5 Thermal Storage

2.10 PLUMBING SYSTEMS

- 2.10.1 Cold Water Distribution System
- 2.10.2 Hot Water Distribution System
- 2.10.3 Boiler Plant
- 2.10.4 Fire Extinguishing System
- 2.10.5 Sprinkler System
- 2.10.6 LPG Gas Piping System
- 2.10.7 Swimming Pool

PROJECT / CONSTRUCTION MANAGEMENT

- 3.1 Project / Construction Management
- 3.2 Site Supervision

OTHER SERVICES

4.1 ENERGY CONSERVATION

- 4.1.1 Auditing Designated Buildings and Factories as a Registered Consultant to Department of Energy Development and Promotion
 - Registration Number (Building Category) : 12
 - Registration Number (Factory Category) : 45
- 4.1.2 Energy Consumption Surveys in Building

4.2 VALUE APPRAISAL AND DUE DILIGENCE SERVICE



PROFESSIONAL RECORDS

HOTEL / RESORT

- 1.1 Banyan Tree Resort and Spa, Samui
- 1.2 W. Retreat and Residences, Samui
- 1.3 InterContinental Hua Hin
- 1.4 S31 Hotel
- 1.5 Mandarin Oriental Bangkok (the renovation)
- 1.6 Le Meridien Bangkok, Surawong
- 1.7 The Ambassador hotel (the renovation)
- 1.8 Holiday Inn Regent Beach Cha-Am
- 1.9 Holiday Inn Pattaya
- 1.10 Sheraton Grande Lagoon, Hua Hin
- 1.11 Hotel Plaza Athenes
- 1.12 Grand Hyatt Erawan Hotel
- 1.13 Westin Grande Sukhumvit (Renovation)
- 1.14 J.W. Marriott Hotel
- 1.15 Baiyoke 2 Sky Hotel
- 1.16 Swissotel (Le Concorde Complex)
- 1.17 Bangkok Peninsula Hotel (Now : Four Seasons Hotel)
- 1.18 The Fisherman's Village
- 1.19 Choengmon Resort, Samui
- 1.20 Metropole Hotel, Phuket
- 1.21 Dusit Resort Hotel & Polo Club, Cha-Am
- 1.22 Chiangmai Holiday Inn (Green Hill) Hotel
- 1.23 Twin Lotus Hotel, Nakorn Srithamarat
- 1.24 Kempinski Hotel
- 1.25 Movempic Hotel
- 1.26 Siam City Hotel
- 1.27 Swiss Garden Hotel
- 1.28 Bangkok Twin Tower Hotel
- 1.29 Bann Boran Chiangrai Hotel
- 1.30 Laguna Beach Club Resort
- 1.31 Siam Ballroom Phase 2 (Siam Intercontinental Hotel)
- 1.32 Royal Chiang Mai Hotel And Golf Club
- 1.33 Independence Hotel, Kampongsm, Cambodia (Renovation)
- 1.34 Little Duck Hotel, Chiangrai

OFFICES

- 2.1 Thanaphoom Tower
- 2.2 The Elephant Building, Ratchayothin
- 2.3 United Center Tower
- 2.4 Siripinyo Building
- 2.5 S.S.P. Building 3
- 2.6 C.T.I. Tower
- 2.7 Maleeonn Tower, Rama IV (including production house of channel 3 television)
- 2.8 Le Concorde Office Tower
- 2.9 Wall Street Tower
- 2.10 Srijuulp Tower
- 2.11 Beauty Gems Tower
- 2.12 Ural Building
- 2.13 Silpathai Building
- 2.14 The Nation Tower I, II
- 2.15 Thai Life Insurance Building, Rattanaibet
- 2.16 Muang Thong Thani Project (Villa Office)
- 2.17 The Malaysian Embassy
- 2.18 The Privy Council Office

CORPORATE OFFICES

- 3.1 Stock Exchange of Thailand (New Headquarters)
- 3.2 Thai Airways International Building, Head Office
- 3.3 Bank of Asia Head Office, Robot Building
- 3.4 Siam Commercial Bank (S.C.B.), Chidlom Office
- 3.5 Siam Commercial Bank (S.C.B.), Phase III, Ratchayothin
- 3.6 Shell Building, Head Office
- 3.7 Lean Tower, Thai Airways International
- 3.8 Samaggi Insurance Tower
- 3.9 Krung Thai Bank, Head Office
- 3.10 I.F.C.T. Buildings
- 3.11 ESSO Building

COMPLEXES

- 4.1 Jewelry Trade Center
- 4.2 Silom Complex
- 4.3 Royal Charoenkrung Tower
- 4.4 Central City Bangna (East Tower)
- 4.5 Ploenchit Center
- 4.6 Siam Commercial Complex (S.C.B.) Phase III
- 4.7 Amarin Plaza
- 4.8 Gems Tower
- 4.9 Laksi Plaza
- 4.10 Le Concorde Complex
- 4.11 Jomthien Complex
- 4.12 Bang-Rak Plaza
- 4.13 Palm Square, Phuket

GOVERNMENT

- 5.1 The Parliament Building, the office
- 5.2 Bank Note Printing Plant, Bank of Thailand
- 5.3 The Ministry Of Foreign Affairs Office, Jaengwattana
- 5.4 Metropolitan Electricity Authority office (MEA), Laksi
- 5.5 The United Nation Tower
- 5.6 Ministry of Finance Office, Rama VI
- 5.7 The United Nations, Economic and Social Commission for Asia and the Pacific (UN-ESCAP), the renovation
 - 5.7.1 Vertical Transportation
 - 5.7.2 HVAC upgrading system

RESIDENTIAL

- 6.1 Villa Asoke
- 6.2 Intro by RASA
- 6.3 Villa Rachatewi
- 6.4 The FAH
- 6.5 The Regent Bangkok
- 6.6 The SAIL Residences, Pattaya
- 6.7 Royal Charoenkrung Tower
- 6.8 Sky Beach
- 6.9 Silom Palace
- 6.10 Silver Beach
- 6.11 Lumpini Park View
- 6.12 Park Beach
- 6.13 City Lake Condominium
- 6.14 La Cascade
- 6.15 The President Park
- 6.16 Sathorn Park Place
- 6.17 Dusit Resort, Hua Hin
- 6.18 Metro Jomthien Condotel
- 6.19 Tridhos City Marina
- 6.20 Bangkok River Park Condominium
- 6.21 Thana City
- 6.22 Apartment Sukhumvit 33
- 6.23 HuaHin Sea-View Paradise
- 6.24 Bann Monchale, Cha-Am
- 6.25 Sathorn Garden
- 6.26 The Elephant Building, Ratchayothin
- 6.27 Central City Bangna (East Tower)
- 6.28 Coconut Beach Condominium, Pattaya

RETAILS

- 7.1 Central Plaza Chiang-Rai
- 7.2 Central Plaza Pinklao (the renovation)
- 7.3 The Vue, Charoen Nakorn
- 7.4 The Rain Hill sukhumvit 47
- 7.5 Nikorn Thani
- 7.6 Porto Chino Community mall
- 7.7 Digital Gateway, Siam Square (Independent Checker)
- 7.8 B/G C Super Center
 - 7.8.1 Thanyaburi Branch
 - 7.8.2 Mahachai Branch
 - 7.8.3 Loomsak Branch
 - 7.8.4 Ta-ma-ka, Kanjanaburi Branch
 - 7.8.5 Rajapruck Branch
 - 7.8.6 Thepkasastree
- 7.9 Central Town Center (Rattanaibet Phase II)
- 7.10 the Erawan Bangkok
- 7.11 Central Department Store, Hua-Mark
- 7.12 Robinson Department Store, Donmuang
- 7.13 Ploenchit Center
- 7.14 Laksi Plaza
- 7.15 Bangrak Plaza
- 7.16 Silom Complex
- 7.17 Amarin Plaza
- 7.18 Cathay Department Store, Bang Kae
- 7.19 Ratchadamri Arcade
- 7.20 Ploenchit Arcade

EDUCATION

- 8.1 IT and Laboratory Studies for medical student, Siriraj Hospital
- 8.2 Laboratories Study and Bio Safety research facilities, Khon Kaen University
- 8.3 Thammasat Gymnasium, The 13th Asian Game Project
- 8.4 Thammasat Multipurpose Building II, Bangkok
- 8.5 Medical Study building for Dentist, Khon Kaen University
- 8.6 Bangkok University art gallery and multipurpose building
- 8.7 Mae-Fah Luang University, Chiang-Rai
- 8.8 Khon Kaen University, Exhibition And Conference Building
- 8.9 Thammasat Central Library, Bangkok
 - 8.9.1 Lecture Building I
 - 8.9.2 Lecture Building II
 - 8.9.3 Lecture Building III
 - 8.9.4 Lecture Building IV
 - 8.9.5 Faculty of Engineering Building (Int.)
 - 8.9.6 Library Building
 - 8.9.7 Laboratories
 - 8.9.8 Multi - Purpose Building
- 8.10 Na-Ray Suan University, Pichit

INDUSTRIALS

- 9.1 Yuasa Battery Factory, Gateway Industrial Estate
- 9.2 Siam Nastech Factory (Extension)
- 9.3 Fuji Serina Factory
- 9.4 Cornel Polymer Factory
- 9.5 Siamwala Warehouse
- 9.6 Super Gold Factory
- 9.7 Universal Toy Factory (Match Box)
- 9.8 Pranda Jewelry Factory
- 9.9 Artico Craft Toy Factory
- 9.10 Match Box Factory
- 9.11 American Standard Factory, 2nd Phase
- 9.12 Tai Ping Factory, 2nd Phase
- 9.13 Coca-Cola Bottling Plants (Hua Mak, Pathumthani, Khon Kaen, Lampang, Haad Yai)
- 9.14 Bangkok Domtex
- 9.15 NTS Steelmill
- 9.16 Bangkok Weaving Mill
- 9.17 Siam Tsuchiya Factory
- 9.18 Cheena Gasket Factory
- 9.19 Siam Tsuchiya Mfg. Factory, Bangplee

COMPUTER CENTERS

- 10.1 North Park Computer Center, Stock Exchange of Thailand
- 10.2 United Nations Computer Center, Bangkok, 1972
- 10.3 Sita Switching Center, Rajdamri Arcade, 1979
- 10.4 Computer Center At Bank Note Printing Plant, Bank Of Thailand, 1977
- 10.5 Computer Center, Siam Commercial Bank, Chidlom Office
- 10.6 Computer Center, Krung Thai Bank Head Office
- 10.7 Computer Center 1st Expansion, Siam Commercial Bank, Chidlom Office
- 10.8 Northern Computer Center, Siam Commercial Bank, Chieng Mai
- 10.9 Computer Center 2nd Expansion, Siam Commercial Bank, Chidlom Office
- 10.10 Southern Computer Center, Siam Commercial Bank, Had Yai
- 10.11 Siamnet Computer Center
- 10.12 Government Saving Bank Computer Centers at Bangkok, Chiangmai, Nakornraisima
- 10.13 ESSO's Computer Center (new), Bangkok
- 10.14 Renovations of UPS for Siam Commercial Bank Computer Center
- 10.15 Data Center, Thai Airways International

HEALTH CARES

- 11.1 Srinakarin Hospital (Srinakarin University)
- 11.2 Ratnin Eye Hospital
- 11.3 Khon Kaen Hospital
- 11.4 Buayai Hospital
- 11.5 Siriraj Hospital, Anantamahidhol Building
- 11.6 Bumrungraj Hospital, Main Power Distribution (Renovation)
- 11.7 Khelangnakorn Hospital, Lampang
- 11.8 Kalasin Hospital

PORTS

- 12.1 Sriracha Harbour
- 12.2 Maptaphut Port
- 12.3 Phuket Deep Sea Port
- 12.4 Songkla Deep Sea Port
- 12.5 Donmuang Airport (Air-Bridge Terminals)

MASTER PLAN, INFRASTRUCTURE PROJECT

- 13.1 Mass Rapid Transport Authority (MRTA) (CSC I)
- 13.2 Mae-Fah Luang University, Chiang-Rai
- 13.3 The Master Plan For National Housing Authority, Din-Daeng Site
- 13.4 Muang Thong Thani, Infrastructure
- 13.5 Telephone Organization Of Thailand, Ploenchit Office
- 13.6 State Railway Of Thailand
 - 13.6.1 Paholyothin Site
 - 13.6.2 Makkasan Site
- 13.7 The Government House

LABORATORY

- 14.1 Siriraj Hospital, IT Studies and Laboratory for Medical studies
- 14.2 Khon Kaen University Laboratory for Medical studies

OTHER PROJECTS

- 15.1 Community Market, Phnom Penh, Cambodia (Soraya Market)
- 15.2 New Office, Storage and Garage of ESSO Standard Thailand Limited, Bangkok
- 15.3 ESSO's Chongnonsri Terminal Security System And Command Center
- 15.4 Multi-Credit Corporation of Thailand Company Limited (Kanchanat Building Branch)
- 15.5 Thammasat Gymnasium, The 13th Asian Game
- 15.6 Mae-Ping Convention (Imperial Mae-Ping Hotel)

ENERGY CONSERVATION PROJECT

- 16.1 Hawaii Tower, Bangkok
- 16.2 TOT services center, Maptapud, Rayong
- 16.3 Song Phunburi Hotel, Suphanburi
- 16.4 Petcharat Hospital, Petchburi
- 16.5 Saovaluk Thani Hotel, Surat Thani
- 16.6 Rajabhat Buriram, Buriram
- 16.7 Amarin Plaza, Bangkok
- 16.8 Sukhumvit Hospital
- 16.9 AP National, Samut Prakarn
- 16.10 Samaggi Insurance, Bangkok
- 16.11 Laksi Plaza, Bangkok
- 16.12 Riverside Hotel, Bangkok
- 16.13 Saint John University, Bangkok
- 16.14 Saint John Polytechnic, Bangkok
- 16.15 Saint John School, Bangkok
- 16.16 Saint John International School, Bangkok
- 16.17 BB Building, Bangkok
- 16.18 Pachorn Place, Bangkok
- 16.19 Pacific Price Hotel, Chonburi
- 16.20 Welcome Jomthien Hotel, Chonburi
- 16.21 Talay Thong Tower, Chonburi
- 16.22 Rom-Po Mansion, Bangkok
- 16.23 Jarun Tower, Bangkok
- 16.24 Bang Pa Kong Royal Country Club, Cha Choeng Sao
- 16.25 UN-ESCAP building, Bangkok



W. AND ASSOCIATES



CURRENT PROJECTS



CURRENT PROJECTS

HOTEL

- HOTEL Soi Soonvijai
- Q1 Hilton Patong
- PATONG SAI 3
- IBIS Hotel Sukhumvit 48
- BANGKOK MARRIOTT HOTEL Queen's Park
- IMPERIAL BOAT HOUSE
- IMPERIAL SAMUI BEACH
- AMARI WATERGATE Bangkok Hotel
- AMTHADA Hotel & Residence
- CAPE NGA RESORT
- PARK HYATT Hotel and Residences
- AMARA Bangkok Hotel
- CROWNE PLAZA
- THE SAIL PATTAYA
- LE MERIDIEN HOTEL AND SERVICES APARTMENT

HEALTH CARE

- BANGKHUN-TIEN HOSPITAL
- DARARASSAMEE HOSPITAL
- HARIPHUNCHAI HOSPITAL

RESIDENTIAL

- THE LINE RATCHATHEWI, CONDOMINIUM
- THE LINE JATUJAK-MOCHIT, CONDOMINIUM
- the PRODIGY
- ANGSANA RESIDENCE, the renovation
- THE BASE CONDOMINIUM, Korat
- TAWEE ONE PLACE, Renovation
- SERRANO CONDOMINIUM Rama II
- SAMARNCHANT Condominium
- ASCENT CONDOMINIUM
- THE BASE RATCHADA-THAPRA
- THE PARK LAND PHETKASEM
- THE IVY AMPIO
- THE ELEMENT CONDOMINIUM
- SUMMIT WINDMILL Redevelopment
LE MERIDIEN Hotel and Services Apartment
- WORA SUKHUMVIT

OFFICE

- C-ASEAN
- THAIRATH TV SOUND & STUDIO
- STOCK EXCHANGE OF THAILAND
(New Headquarters)
- BANK OF THAILAND KHONKAEN
- OFFICE @ ASOKE
- HTOO TRADING OFFICE
- MYINT & ASSOCIATE OFFICE TOWER
- THAI INSURANCE OFFICE

RETAIL

- ROBINSON RATCHADA, the renovation
- AEKAMAI GATEWAY, the renovation
- CENTRAL PLAZA KOKO
- CENTRAL PLAZA RAYONG
- METRO EAST TOWN, Sukhumvit
- CENTRAL PLAZA SALAYA
- THE EMPIRE renovation
- PLEARNARY MALL
- JEDDAH HOUSING COMPLEXE
- METRO WEST TOWN, Sathorn-Kallapruak
- BIG C SUPER CENTER
 - Roiet Branch
 - Aungthong Branch
 - Kalasin Branch
 - Samutrsongkram Branch
- MYAWADDY TOWN SQUARE
- UBON SQUARE



CURRENT PROJECTS





Retails


- Project Title : **CENTRAL PLAZA NAKORN RACHASIMA (KORAT)**
- Location : Nakorn Rachasima, Thailand
- Owner : Central Pattana Plc.
- Commissioned : 2014-2015
- Project Summary : Construction area est. 233,800 sq.m., Shopping Complexes comprise of Retail Spaces, Anchors, Cinemas, F&B and etc.
- Construction Cost : est. 6,000 million baht
- Firm's Role : M&E System Design: Air-conditioning, Ventilating
Electrical Power, Lighting, Telecommunication
Fire Alarm, Public Address and Background Music
Master Antenna Television, CCTV, Fire Fighting
Waste Water Treatment, Recycle Water Irrigation
Security System, Vertical Transportation and Escalators
- Civil and Structural design




CURRENT PROJECTS




Project Title : **CENTRAL PLAZA RAYONG**

Location : Rayong, Thailand

Owner : Central Pattana Plc.

Commissioned : 2013-2015

Project Summary : Construction area est. 136,550 sq.m., Shopping Complexes

Construction Cost : est. 4,000 million baht

Firm's Role : M&E System Design: Air-conditioning, Ventilating
Electrical Power, Lighting, Telecommunication
Fire Alarm, Public Address and Background Music
Master Antenna Television, CCTV, Fire Fighting
Waste Water Treatment, Recycle Water Irrigation
Security System, Vertical Transportation.




CURRENT PROJECTS

Retails



Project Title : **CENTRAL PLAZA SALAYA**

Location : Nakhonpathom

Owner : Central Pattana Plc.

Commissioned : 2012-2014

Project Summary : Construction area est. 89,500 sq.m., Shopping Complexes

Construction Cost : 2,700 millions Baht

Firm's Role : M&E System Design: Air-conditioning, Ventilating
Electrical Power, Lighting, Telecommunication
Fire Alarm, Public Address and Background Music
Master Antenna Television, CCTV, Fire Fighting
Waste Water Treatment, Recycle Water Irrigation
Security System, Escalator, Vertical Transportation.



CURRENT PROJECTS



 Retails


Project Title	:	PLEARNARY MALL
Location	:	Wacharaphol Bangkok, Thailand
Owner	:	Prinsiri plc.
Commissioned	:	2012-2014
Project Summary	:	a 2-storeys Community Mall with the size of 24,000 sq.m.
Construction Cost	:	410 Million Baht
Firm's Role	:	M&E System Design: Air-conditioning, Ventilating Electrical Power, Lighting, Telecommunication Fire Alarm, Access Control, CCTV, Fire Fighting Waste Water Treatment, Recycle water, Irrigation Security System, Vertical Transportation

Civil and Structural design



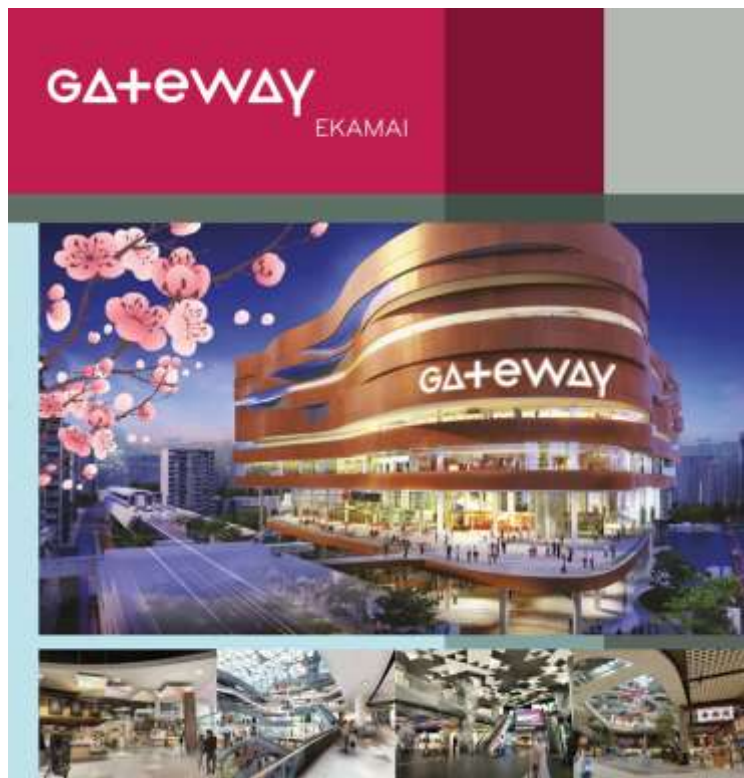
CURRENT PROJECTS




- Project Title : **THE STREET**
- Location : Rachada Phisek Road Thailand
- Owner : Variety 5 Co., Ltd.
- Commissioned : 2014-2015
- Project Summary : Construction area est. at 60,000sq.m.,
the site will be developed into a new shopping destination
targeting new generation of customer around the area.
- Construction Cost : est. 600 million baht
- Firm's Role : M&E System Design: Air-conditioning, Ventilating
Electrical Power, Lighting, Telecommunication
Fire Alarm, Public Address and Background Music
Master Antenna Television, CCTV, Fire Fighting
Waste Water Treatment, Security System, Vertical
Transportation and Escalators.



CURRENT PROJECTS


 Retails


- Project Title : **EKAMAI GATEWAY, the renovation**
- Location : Ekamai, Thailand
- Owner : TCC Group
- Commissioned : 2014
- Project Summary : Renovation of level 4 and 5 to suit changing shopping environment.
- Construction Cost : est. 200 million baht
- Firm's Role : M&E System Design: Air-conditioning, Ventilating
Electrical Power, Lighting, Telecommunication
Fire Alarm, Public Address and Background Music
Master Antenna Television, CCTV, Fire Fighting
Waste Water Treatment,
Security System, Vertical Transportation.



CURRENT PROJECTS

Retails



Project Title	:	EMPIRE TOWER (The renovation)
Location	:	Sathorn Road, Bangkok
Owner	:	TCC Group
Commissioned	:	2012-2014
Project Summary	:	the renovation of front tower to be a Shopping Mall (36,000 sq.m.)
Construction Cost	:	1,000 millions Baht
Firm's Role	:	M&E System Design: Air-conditioning, Ventilating, Electrical Power Lighting, Telecommunication, Fire Alarm, CCTV, Access Control Fire Fighting, Waste water treatment, Storm Drainage, BAS Security System and Vertical Transportation, LPG system.



CURRENT PROJECTS


 Retails


- Project Title : **JEDDAH HOUSING COMPLEX**
- Location : Jeddah, Saudi Arabia
- Owner : RIC (Rayadah Investment Company)
- Commissioned : 2013 - 2015
- Project Summary : Construction area est. 29,800 sq.m. Shopping Complexes
- Construction Cost : 810 Million Baht
- Firm's Role : M&E System Design: Air-conditioning, Ventilating, Electrical Power, Lighting, Telecommunication, Fire Alarm, Public Address and Background Music (sound), Master Antenna Television, CCTV, Fire Fighting, Waste water treatment, Recycle water, Irrigation, Pool Support, Security System, Vertical Transportation.



CURRENT PROJECTS

Retails



- Project Title : **METRO EAST TOWN**
- Location : Sukhumvit 77, Bangkok
- Owner : Property Perfect Plc.
- Commissioned : 2012-2014
- Project Summary : a Community Mall with the Construction area of 23,000 Sq.m.
- Construction Cost : 400 Million Baht
- Firm's Role : M&E System Design: Air-conditioning, Ventilating
Electrical Power., Lighting, Telecommunication
Fire Alarm, Access Control, CCTV, Fire Fighting
Waste Water Treatment, Recycle water, Irrigation,
Security System, Vertical Transportation.



CURRENT PROJECTS

Retails



- Project Title : **METRO WEST TOWN**
- Location : Kalaprapuek, Bangkok
- Owner : Property Perfect Public Company Limited
- Commissioned : 2012-2014
- Project Summary : a Community Mall with the construction area of 22,000 Sq.m.
- Construction Cost : 500 Million Baht
- Firm's Role : M&E System Design: Air-conditioning, Ventilating, Electrical Power., Lighting, Telecommunication, Fire Alarm, Access Control, CCTV, Fire Fighting, Waste Water Treatment, Recycle water, Irrigation, Security System, Vertical Transportation.



CURRENT PROJECTS

Retails



Project Title : **BIG C SUPER CENTER**
 - Roiet Branch
 - Aungthong Branch
 - Kalasin Branch
 - Samutrsongkram Branch

Owner : Big-C Supercenter Public Co., Ltd.

Project Summary : Superstore with retail outlets, Cinemas and etc.
 Firm's Role : M&E System Design: Air-conditioning, Ventilating, Electrical Power, Lighting, Telecommunication, Fire Alarm, CCTV, Access Control, Fire Fighting, Waste water treatment, Storm Drainage, Security System and Vertical Transportation.



CURRENT PROJECTS





Retails


Project Title : **UBON SQUARE**

Location : Ubonratchathani, Thailand

Owner : บริษัท เจริญพัฒนาเขต จำกัด (โครงการนิคมราชธานี)

Commissioned : 2012-2014

Project Summary : 18,551 sq.m. Open Mall

Construction Cost : -

Firm's Role : M&E System Design: Air-conditioning, Ventilating, Electrical Power, Lighting, Telecommunication, Fire Alarm, Plumbing & Fire Protection system, Waste water treatment and Drainage System



Project Title : **MYAWADDY TOWN SQUARE**

Location : Myanmar

Owner : Htoo Trading Co., Ltd.

Commissioned : 2011-2013

Project Summary : a Shopping Mall with the construction area of 30,000 sq.m. with Cinema and etc.

Construction Cost : -

Firm's Role : M&E System Design: Air-conditioning, Ventilating, Electrical Power, Lighting, Telecommunication, Fire Alarm, Building Management, CCTV, Gas piping, Hot water generation, Fire Fighting, Waste water treatment, Recycle water, Irrigation Pool Support and Security System.



CURRENT PROJECTS


 Offices


Project Title : **STOCK EXCHANGE OF THAILAND**
(New Headquarters)

Location : Rachadapisek Road, Bangkok
 Owner : The Stock Exchange of Thailand
 Commissioned : 2011 -2014
 Project Summary : NEW Hear Quarter of Stock Exchange of Thailand with the construction area of 59,000 sq.m.
 Construction Cost : est. 2,800 million baht
 Firm's Role : M&E System Design: Air-conditioning, Ventilating, Electrical Power, Lighting, Telecommunication, Fire Alarm, CCTV, Access Control, Fire Fighting, Waste water treatment, Storm Drainage, BAS, Security System and Vertical Transportation.

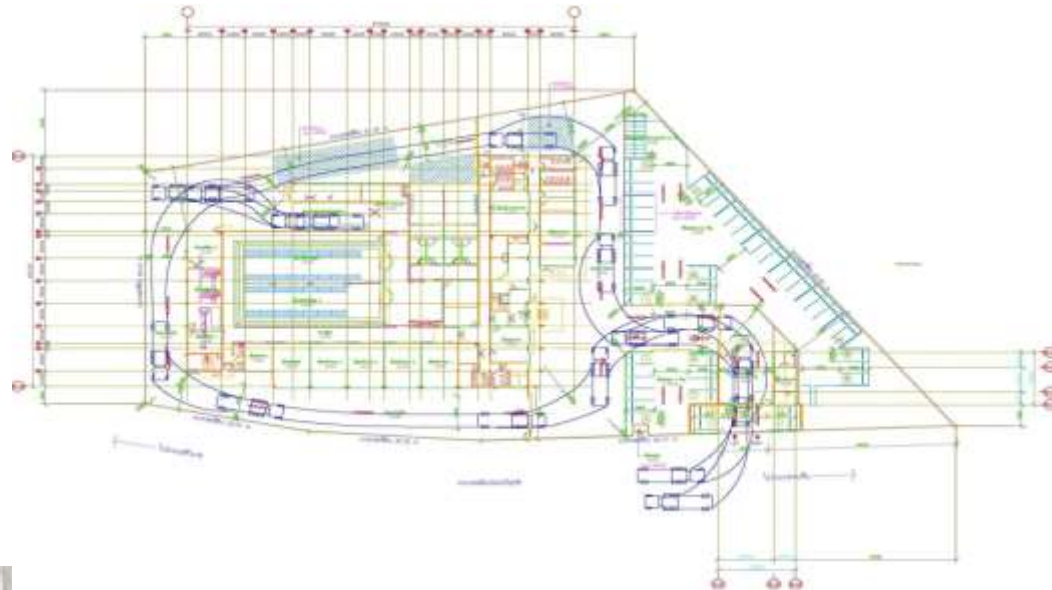


CURRENT PROJECTS

Offices



- Project Title : **Bank Of Thailand Khonkaen**
- Location : Khonkaen
- Owner : Bank of Thailand.
- Commissioned : 2012-2014
- Project Summary : 2-Stories Office building with Strong Room and Building security system according to the BOT Standard
- Construction Cost : 350 million baht
- Firm's Role : M&E System Design: Air-conditioning, Ventilating, Electrical Power, Lighting, Telecommunication, Fire Alarm, CCTV, Access Control, Fire Fighting (Extra Hazard),Waste water treatment, Full Security System , Master Clock System



CURRENT PROJECTS


 Offices


Project Title : **OFFICE@ASOKE**
 Location : Asoke Road., Bangkok
 Owner : Bangkok Boutique Hotel (Thailand) Co., Ltd.
 Commissioned : 2012-2015
 Project Summary : 30-storey Office building with 3-storey Basement and Car Park 10-storey
 Construction Cost : 900 million baht
 Firm's Role : M&E System Design: Air-conditioning, Ventilating, Electrical Power, Lighting, Telecommunication, Fire Alarm, CCTV, Access Control, Fire Fighting, Waste water treatment, Recycle water, Irrigation, Security System and Vertical Transportation.



Project Title : **HTOO TRADING OFFICE**
 Location : Yangon, Myanmar
 Owner : Htoo Trading Co., Ltd.
 Commissioned : 2011-
 Project Summary : a 40,000 sq.m. Office Building
 Construction Cost : -
 Firm's Role : M&E System Design: Air-conditioning, Ventilating, Electrical Power, Lighting, Telecommunication, Fire Alarm, CCTV, Fighting, Waste water treatment, Storm Drainage,

 Civil and Structural design



CURRENT PROJECTS

Offices



Project Title : **MYINT & ASSOCIATE OFFICE TOWER**

Location : PYAY Road, Myanmar

Owner : Mynt Associates

Commissioned : 2010-2014

Project Summary : 29,900 sq.m. Office Building

Construction Cost : est. 1,000 million baht

Firm's Role : M&E System Design: Air-conditioning, Ventilating, Electrical Power, Lighting, Telecommunication, Fire Alarm, CCTV, Access Control, Fire Fighting, Waste water treatment, Storm Drainage, BAS, Security System and Vertical Transportation.



Project Title : **THAI INSURANCE
Bang Na office**

Location : Samutprakarn Road

Owner : Thai Life Insurance Co., Ltd.

Commissioned : July 2013 – January 2015

Project Summary : a 31,350 sq.m., Office Building

Construction Cost : 700,000,000.00 Baht

Firm's Role : M&E System Design: Air-conditioning, Ventilating, Electrical Power, Lighting, Telecommunication, Data cabling, Fire Alarm, Public Address and Background Music (sound), Master Antenna Television, Access Control, CCTV, Fire Fighting, Waste water treatment, Recycle water, Irrigation, Pool Support, Security System, Vertical Transportation.



CURRENT PROJECTS

Offices



- Project Title : **THAIRATH TV & SOUND STUDIO**
- Location : Vibhavadee-Rangsit Rd., Bangkok
- Owner : Vacharapol Co., Ltd.
- Commissioned : 2012-2014
- Project Summary : 12 -Storey building with separated 1,500 Sq.M. BOH building for chiller plant, transformer and generator house to back up. Comprising of 3 Studio & Control Room, Office area and residence penthouse at the most top floor.
- Construction Cost : 900 millions Baht
- Firm's Role : M&E System Design: Air-conditioning, Ventilating, Electrical Power, Lighting, Telecommunication, Fire Alarm, CCTV, MATV, Access Control, Fire Fighting, Waste water treatment, Recycle Water, Irrigation, Security System , Master Clock System and Vertical Transportation.



CURRENT PROJECTS

Offices



Project Title : **C-Asean**

Location : Ratchdaphisek Rd., Bangkok

Owner : TCC Capital Land

Commissioned : 2013

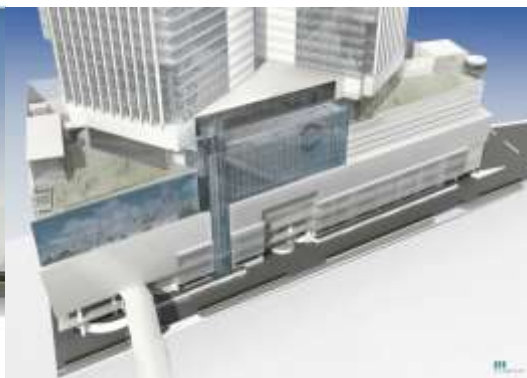
Project Summary : Total area of 10,000 Sq.m.

Construction Cost : 400 Millions Baht

Firm's Role : M&E System Design: Air-conditioning, Ventilating, Electrical Power, Lighting, Telecommunication, Fire Alarm, CCTV, MATV, Access Control, Fire Fighting, Waste water treatment, Recycle Water, Irrigation, Security System , Master Clock System and Vertical Transportation.



Civil and Structural design



CURRENT PROJECTS

Hotels



- Project Title : **HOTEL SOI SOONVIJAI**
- Location : Soi soonvijai, Bangkok
- Owner : บริษัท อควาเรียส โฮเทล แอนด์ รีสอร์ท จำกัด
- Commissioned : 2015-2016
- Project Summary : Building A area is estimated at 3,800 sq.m.
Building B area is estimated at 3,500 sq.m.
Building C area is estimated at 3,900 sq.m.
Total construction area is 11,200 sq.m.
- Construction Cost : 200 millions Baht
- Firm's Role : M&E System Design: Air-conditioning, Ventilating, Electrical Power, Lighting, Telecommunication, Fire Alarm, Building Management, CCTV, Gas piping, Hot water generation, Fire Fighting, Waste water treatment, Recycle water, Irrigation Pool Support, Public announcement, Vertical Transportation and Security System.
- Civil and Structural design



CURRENT PROJECTS

Hotels



Project Title	:	PATONG SAI 3
Location	:	Patong, Thailand
Owner	:	Boutique Asset Management Ltd
Commissioned	:	2015-2017
Project Summary	:	Approx. 180 to 200 keys ,8 level structure, 2 levels underground basement , First level underground basement to contain Back of House offices. Roof top to have large resort type pool with Commercial kitchen/restaurant and bar/lounge to give resort feel (if inadequate space then we will move commercial kitchen to basement) .Construction area is estimated at 10,000 sq.m.
Construction Cost	:	450 millions Baht
Firm's Role	:	M&E System Design: Air-conditioning, Ventilating, Electrical Power, Lighting, Telecommunication, Fire Alarm, Building Management, CCTV, Gas piping, Hot water generation, Fire Fighting, Waste water treatment, Recycle water, Irrigation Pool Support, Public announcement, Vertical Transportation and Security System.
		Civil and Structural design



CURRENT PROJECTS

Hotels



Project Title : **IBIS Hotel**

Location : Prakanong area, Bangkok

Owner : Apollo Estate Co., Ltd..

Commissioned : 2014 - 2016

Project Summary : Construction area is estimated at 16,870 sq.m.

Construction Cost : 800 millions Baht

Firm's Role : M&E System Design: Air-conditioning, Ventilating, Electrical Power, Lighting, Telecommunication, Fire Alarm, Building Management, CCTV, Gas piping, Hot water generation, Fire Fighting, Waste water treatment, Recycle water, Irrigation Pool Support, Public announcement, Vertical Transportation and Security System.

Civil and Structural design



CURRENT PROJECTS

Hotels



- Project Title : **BANGKOK MARRIOTT HOTEL Queen's Park**
- Location : Sukhumvit, Bangkok
- Owner : TCC Hotel Group
- Commissioned : 2013-2015
- Project Summary : the Rebranded work for Imperial Queens Park to be a Marriott Hotel. Hotel size is 150,000 sq.m. with North and South Tower
- Construction Cost : 3,000 millions Baht
- Firm's Role : M&E System Design: Air-conditioning, Ventilating, Electrical Power, Lighting, Telecommunication, Fire Alarm, Building Management, CCTV, Gas piping, Hot water generation, Fire Fighting, Waste water treatment, Recycle water, Irrigation Pool Support, Public announcement, Vertical Transportation and Security System.



Civil and Structural design



CURRENT PROJECTS

Hotels



- Project Title : **AMARA BANGKOK HOTEL**
- Location : Suriwong Rd., Bangkok
- Owner : AMARA Hospitality (Thailand) Co., Ltd.
- Commissioned : 2010-2014
- Project Summary : Hotel 28-storey high rise, land area 2,180 sq.m. and construction area est. 21,800 sq.m.
- Construction Cost : 1,450 million Baht
- Firm's Role : M&E System Design: Air-conditioning, Ventilating, Electrical Power, Lighting, Telecommunication, Fire Alarm, CCTV, Access Control, LPG, Fire Fighting, Waste water treatment, Site Drainage, Pool Support, Security System and Vertical Transportation.



- Project Title : **CROWNE PLAZA**
- Location : Sukhumvit Road, Bangkok
- Owner : Grande Asset Development Public Co., Ltd.
- Commissioned : 2007 (under construction)
- Project Summary : 40,000 sq.m. of hotel building
- Construction Cost : est. 1,600 millions Baht
- Firm's Role : M&E System Design: Air-conditioning, Ventilating, Plumbing, Sanitary, Electrical Power, Lighting, Telecommunications, CCTV, Fire Alarm and Building Automation System, Vertical Transportation, LPG system



CURRENT PROJECTS

Hotels



- Project Title : **IMPERIAL BOAT HOUSE Resort
Re-Branded Work**
- Location : Samui Island, Suratthani Thailand
- Owner : Hotel Group Service (Thailand) Co., Ltd.
- Commissioned : 2013-2014
- Project Summary : 3-storey resort hotel of 210 keys, Land area of 29,792 sq.m.
GFA approx. 21,000 sq.m.
- Construction Cost : 300 millions Baht
- Firm's Role : M&E System Design: Air-conditioning,
Ventilating, Electrical Power, Lighting,
Telecommunication, Fire Alarm,
CCTV, Fighting, Waste water treatment,
Storm Drainage



- Project Title : **IMPERIAL SAMUI BEACH Resort
Re-Branded Work**
- Location : Samui Island, Suratthani Thailand
- Owner : Hotel Group Service (Thailand) Co., Ltd.
- Commissioned : 2013-2014
- Project Summary : 3-storey Hotel 141 keys, Land area of 34,964 sq.m.
GFA approx. 16,800 sq.m.
- Construction Cost : 350 millions Baht
- Firm's Role : M&E System Design: Air-conditioning,
Ventilating, Electrical Power, Lighting,
Telecommunication, Fire Alarm,
CCTV, Fighting, Waste water treatment,
Storm Drainage



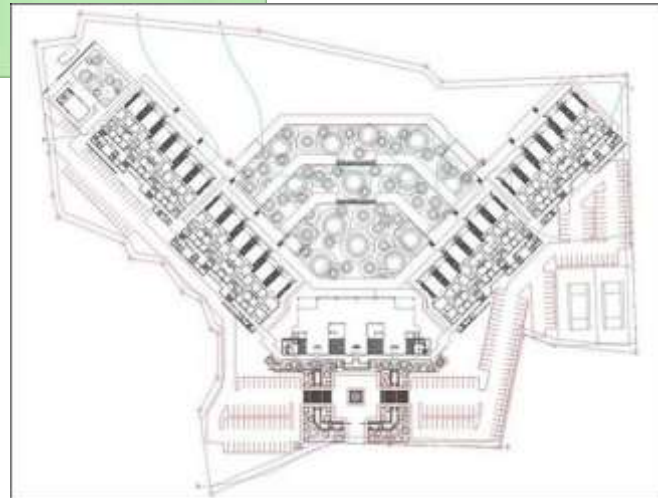
CURRENT PROJECTS

Hotels



Hotel

Project Title	:	AMTHADA Hotel and Condominium
Location	:	Phuket, Thailand
Owner	:	Somprasong Group
Commissioned	:	2011- 2015
Project Summary	:	Hotel (20,000 sq. m.). Residences (40,000 sq. m.)
Construction Cost	:	1,600 millions baht
Firm's Role	:	M&E System Design: Air-conditioning, Ventilating Electrical Power, Lighting, Telecommunication, Fire Alarm CCTV, Fighting, Waste water treatment, Storm Drainage Civil and Structural design



Condominium



CURRENT PROJECTS

Hotels



Project Title : **Le Meridien Hotel and Services Apartment**

Location : Bang-Na Trad Rd., Bangkok

Owner : Summit Windmill Golf Club

Commissioned : 2008-2014

Project Summary : 5-star Hotel and Service Apartment

Construction Cost : est. 1,600 millions Baht

Firm's Role : M&E System Design: Air-conditioning, Ventilating, Electrical Power, Lighting, Telecommunication, Fire Alarm, Building Management, CCTV, Hot water generation, Fire Fighting, Building Automation, Waste water treatment, Security System and Vertical Transportation.




Project Title : **THE SAIL PATTAYA
Le Meridien Hotel and Condominium**

Location : Jomthien, Pattaya

Owner : Grande Asset Development Pcl.

Commissioned : 2008 - Pending

Project Summary : Five-star Hotel and Condominium
(35,000 sq.m.)

Construction Cost : est. 65 millions USD

Firm's Role : M&E System Design: Air-conditioning, Ventilating, Electrical Power, Lighting, Telecommunication, Fire Alarm, Building Management, CCTV, Hot water generation, Fire Fighting, Waste water treatment, Security System and Vertical Transportation.




CURRENT PROJECTS

Hotels



Project Title : **PARK HYATT Hotel and Residences**

Location : Koh Samui, Suratthani

Owner : Proud Resorts Koh Samui Co., Ltd.

Commissioned : 2009 - Pending

Project Summary : 45,000 sq.m. of Hotel and Residence Villas

Construction Cost : est. 1,800 millions Baht

Firm's Role : M&E System Design: Air-conditioning, Ventilating, Electrical Power, Lighting, Telecommunication, Fire Alarm, Building Management, CCTV, Gas piping, Hot water generation, Fire Fighting, Waste water treatment, Recycle water, Irrigation Pool Support and Security System.

PARK HYATT™
HYATT

Project Title : **CAPE NGA RESORT**

Location : Phuket

Owner : Cape nga Development Co., Ltd.

Commissioned : 2010

Project Summary : 60 Pool Villas, 10 residences (5 keys each)
area 90 rais

Construction Cost : Est. 2,100 million baht

Firm's Role : M&E System Design: Air-conditioning, Ventilating, Electrical Power, Lighting, Telecommunication, Fire Alarm, Building Management, CCTV, Gas piping, Hot water generation, Fire Fighting, Waste water treatment, Recycle water, Irrigation Pool Support, Public announcement, Vertical Transportation and Security System.



CURRENT PROJECTS

Residential



- Project Title : **THE LINE RATCHATHEWI, CONDOMINIUM**
- Location : New Petchburi Road, Bangkok Thailand
- Owner : Sansiri Plc.
- Commissioned : 2014-2016
- Project Summary : High-rise Condominium, 38+ storeys., 250 units. Construction area is estimated at 28,000 sq.m.
- Construction Cost : Estimated at 650 million baht
- Firm's Role : M&E System Design: Air-conditioning, Ventilating, Electrical Power, Lighting, Telecommunication, Fire Alarm, CCTV, Fire Fighting, Waste water treatment, Hot water, Storm Drainage, Security, Elevators.
- Civil and Structural design



CURRENT PROJECTS

Residential



Project Title	:	THE LINE JATUJAK-MOCHIT, CONDOMINIUM
Location	:	Jatujak, Bangkok Thailand
Owner	:	Sansiri Plc.
Commissioned	:	2014-2016
Project Summary	:	High-rise Condominium, 40+ storeys., 870 units. Construction area is estimated at 60,000 sq.m.
Construction Cost	:	Estimated at 1,350 million baht
Firm's Role	:	M&E System Design: Air-conditioning, Ventilating, Electrical Power, Lighting, Telecommunication, Fire Alarm, CCTV, Fire Fighting, Waste water treatment, Hot water, Recycle Water, Swimming Pool Storm Drainage, Security, Elevators.



CURRENT PROJECTS

Residential



- Project Title : **the PRODIGY**
- Location : Petchakasem 62,Thailand
Owner : GDT Property co.,Ltd.
Commissioned : 2014-2016
Project Summary : A high rise condominium buildings (33 floors) with Construction area estimated at 73,275 sq. m..
- Construction Cost : Estimated at 1,100 million baht
- Firm's Role : M&E System Design: Air-conditioning, Ventilating, Electrical Power, Lighting, Telecommunication, Fire Alarm, CCTV, Fire Fighting, Waste water treatment, Hot water, Swimming Pool, Storm Drainage, Security, Elevators.
- Civil and Structural design



CURRENT PROJECTS

Residential



Project Title : **ANGSANA RESIDENCE**

Location : Phuket, Thailand
 Owner : Laguna Grande Limited.
 Commissioned : 2014-2015

Project Summary : Condominium buildings with Construction area estimated at 9,946 sq. m. The Condominium is a part of Laguna Property.

Construction Cost : Estimated at 350 million baht

Firm's Role : M&E System Design: Air-conditioning, Ventilating, Electrical Power, Lighting, Telecommunication, Fire Alarm, CCTV, Fighting, Waste water treatment, Hot water, Storm Drainage, BMS, Security, Elevators.

Civil and Structural design



CURRENT PROJECTS

Residential



Project Title : **THE BASE CONDOMINIUM**

Location : Korat, Thailand

Owner : Sansiri Plc.

Commissioned : 2013-2015

Project Summary : Construction area est. 90,000 sq.m.
 Building A : 52,000 sq.m., 20-stories
 Building B : 40,000 sq.m., 20 –stories

Construction Cost : 1,300 Million Baht

Firm's Role : M&E System Design: Air-conditioning, Ventilating, Electrical Power, Lighting, Telecommunication, Fire Alarm, Access Control, CCTV, Fire Fighting, Waste water treatment, Recycle water, Irrigation, Security System and Vertical Transportation



Project Title : **THE BASE CONDOMINIUM**

Location : Ratchada-Thapra

Owner : Anawat Co., Ltd.

Commissioned : 2012-2014

Project Summary : Construction area est. 98,000 sq.m., 40-storey high rise bldg.

Construction Cost : 1,300 Million Baht

Firm's Role : M&E System Design: Air-conditioning, Ventilating, Electrical Power, Lighting, Telecommunication, Fire Alarm, Access Control, CCTV, Fire Fighting, Waste water treatment, Recycle water, Irrigation, Security System



CURRENT PROJECTS



Project Title	: SAMARANCHANT CONDOMINIUM
Location	: Sukhumvit Rd., Bangkok
Owner	: Daika Estate Co., Ltd.
Commissioned	: 2013-2015
Project Summary	: 8-storey Condominium with 2 Basement
Construction Cost	: 230 Million Baht
Firm's Role	: M&E System Design: Air-conditioning, Ventilating, Electrical Power, Lighting, Telecommunication, Fire Alarm, Access Control, CCTV, Fire Fighting, Waste water treatment, Recycle water, Irrigation, Pool Support, Security System, and Vertical Transportation.

Residential



Project Title	: ASCENT CONDOMINIUM
Location	: Eakamai Rd., Bangkok
Owner	: 2012-2014
Commissioned	: 2012
Project Summary	: Construction area est. 6,300 sq.m. with 8-storey building
Construction Cost	: est. 200 million baht
Firm's Role	: M&E System Design: Air-conditioning, Ventilating, Electrical Power, Lighting, Telecommunication, Fire Alarm, Access Control, CCTV, Fire Fighting, Waste water treatment, Recycle water, Irrigation, Pool Support, Security System and Vertical Transportation.



CURRENT PROJECTS

Residential



Project Title : **the IVY ampio**

Location : Ratchada Rd., Bangkok

Owner : Prukasa Real Estate Pcl.

Commissioned : 2010-2014

Project Summary : 29-storey Condominium

Construction Cost : 650 millions Baht

Firm's Role : M&E System Design: Air-conditioning, Ventilating, Electrical Power, Lighting, Telecommunication, Fire Alarm, Access Control, CCTV, Fire Fighting, Waste water treatment, Recycle water, Irrigation, Pool Support, Security System and Vertical Transportation.



Project Title : **THE PARKLAND PHETKASEM**

Location : Phetkasem, Bangkok

Owner : Narai Property Co., Ltd.

Commissioned : -

Project Summary : Construction area est. 58,164 sq.m

Construction Cost : 2012-2015

Firm's Role : M&E System Design: Air-conditioning, Ventilating, Electrical Power, Lighting, Telecommunication, Fire Alarm, Access Control, CCTV, Fire Fighting, Waste water treatment, Recycle water, Irrigation, Pool Support, Security System, Vertical Transportation.



CURRENT PROJECTS

Residential



Project Title : **WORA SUKHUMVIT**

Location : Sukhumvit 49, Bangkok

Owner : W Property

Commissioned : 2010-2014

Project Summary : Condominium 8- storey

Construction Cost : 250 millions Baht

Firm's Role : M&E System Design: Air-conditioning, Ventilating, Electrical Power, Lighting, Telecommunication, Fire Alarm, Access Control, CCTV, Fire Fighting, Waste water treatment, Recycle water, Irrigation, Security System



Project Title : **TAWEE ONE PLACE RENOVATION PROJECT**

Location : Sukhumvit 33, Bangkok

Owner : Anektawee co.,Ltd.

Commissioned : -

Project Summary : Apartment 12 storey

Construction Cost : 40 millions Baht (M&E only)

Firm's Role : M&E System Design: Air-conditioning, Ventilating, Electrical Power, Lighting, Telecommunication, Fire Alarm, Access Control, CCTV, Fire Fighting, Waste water treatment, Recycle water, Irrigation, Security System



CURRENT PROJECTS

Residential



Project Title	: THE ELEMENT CONDOMINIUM
Location	: Srinakarin Rd., Bangkok
Owner	: The Country Group
Commissioned	: 2009 -
Project Summary	: Condominium 8-storey high, 8 buildings
Construction Cost	: 1,600 millions Baht
Firm's Role	: M&E System Design: Air-conditioning, Ventilating, Electrical Power, Lighting, Telecommunication, Fire Alarm, Access Control, CCTV, Fire Fighting, Waste water treatment, Recycle water, Irrigation, Pool Support, Security System, Vertical Transportation.



Project Title	: SERRANO CONDOMINIUM
Location	: Rama II, Bangkok
Owner	: -
Commissioned	: 19-11/11
Project Summary	: Phase I with 2 buildings and construction area est. 38,880 sq.m. Phase II with 2 buildings and construction area est. 18,000 sq.m.
Construction Cost	: 1,200 million s Baht
Firm's Role	: M&E System Design: Air-conditioning, Ventilating, Electrical Power, Lighting, Telecommunication, Fire Alarm, Access Control, CCTV, Fire Fighting, Waste water treatment, Recycle water, Irrigation, Pool Support, Security System, Vertical Transportation.



CURRENT PROJECTS

Health Cares



- Project Title : **BANGKHUN-TIEN HOSPITAL**
- Location : Bangkhuntien Bangkok
- Owner : Department of Medical, Bangkok
(สำนักงานแพทย์ ทม.)
- Commissioned : 2011-2015
- Project Summary : Hospital for elderly with Dormitory and etc.
Building size is 110,000 sq.m.
- Firm's Role : M&E System Design : Air conditioning, Ventilation,
Electrical, Emergency power, Lightings, Grounding and
Lightning protection Fire Alarm, Fire protection and
Fire fighting, Plumbing and Sanitary Site Drainage,
Hot water supply, Cold water supply, Gas piping for
kitchen, Public address and Back ground music,
Telecommunication (PABX), Master Antenna (MATV),
Security and digital surveillance (CCTV), Building Management,
Swimming Pool support, Waste water treatment, Irrigation
system and Vertical Transportation system (lifts), Medical Gas



CURRENT PROJECTS

Health Cares



Project Title : **DARARASSAMEE HOSPITAL**

Location : Chiang -Mai

Owner : Dararassamee Hospital

Commissioned : -

Project Summary : 7-storey and Construction area est. 1,100 sq.m.

Construction Cost : -

Firm's Role : M&E System Design: Air-conditioning, Ventilating, Electrical Power, Telecommunication, Fire Alarm, Drinking water system, CCTV, Fire Fighting and Public Address system.



CURRENT PROJECTS

Health Cares

Project Title : **HARIPHUNCHAI HOSPITAL**

Location : Lamphun, Thailand

Owner : Hariphunchai Hospital

Commissioned : -

Project Summary : Construction area est 12,500 sq.m.

Construction Cost : -

Firm's Role : M&E System Design: Air-conditioning, Ventilating, Electrical Power, Telecommunication, Fire Alarm, Drinking water system, CCTV, Fire Fighting and Public Address system.





W. AND ASSOCIATES



PROJECT REFERENCE

HOTEL



CURRENT PROJECT

- HOTEL Soi Soonvijai
- Q1 Hilton Patong
- PATONG SAI 3
- IBIS Hotel Sukhumvit 48
- BANGKOK MARRIOTT Queen's Park
- IMPERIAL BOAT HOUSE (renovation)
- IMPERIAL SAMUI BEACH (Sheraton Samui)
- AMTHADA Hotel & Residence Phuket
- CAPE NGA Resort (Park Hyatt Phuket)
- AMARA Bangkok Hotel
- CROWNE Plaza, Bangkok
- THE SAIL Pattaya (Le Meridien Hotel)
- Le Meridien Suvarnabhumi
- SHERATON GRAND LAGOON, Phuket (Rebranded to ANGSANA Phuket)
- PARK HYATT Hotel and Residences, Samui

PAST PROJECT

- BANYAN TREE Resort and Spa
- MODE SATHORN Hotel by Siam@Siam
- HILTON Sukhumvit Bangkok
- DOUBLE TREE by HILTON Sukhumvit Bangkok
- MARRIOTT Rayong (Phuphatara)
- INTER CONTINENTAL Hua Hin
- W RETREAT AND RESIDENCES, Samui
- S 31 Hotel
- MANDARIN ORIENTAL (The renovation)
- LE MERIDIEN Bangkok
- HOLIDAY INN Regent Beach Cha-Am
- HOLIDAY INN Pattaya
- SHERATON GRANDE LAGOON Hua Hin
- HOTEL PLAZA ATHENEE, a Royal Meridien hotel
- WESTIN GRANDE Sukhumvit (the renovation)
- J.W. MARRIOTT Hotel
- Grand HYATT Erawan Hotel
- FOUR SEASON Hotel (old Peninsular Bangkok)
- BAIYOKE 2 SKY Hotel
- SWISS Hotel (Le Concorde Complex)
- THE FISHERMAN's Village
- METROPOLE HOTEL, Phuket
- DUSIT RESORT HOTEL & POLO CLUB, Cha-Am
- CHIANGMAI HOLIDAY INN (Green Hill) Hotel
- TWIN LOTUS Hotel, Nakorn Srithammarat
- KEMPINSKI Hotel
- MOVENPIC Hotel
- SIAM CITY Hotel
- SWISS GARDEN Hotel
- BANGKOK TWIN TOWER Hotel
- LAGUNA BEACH Resort, Phuket
- ROYAL Chiang-Mai Hotel & Golf Club
- INDEPENDENCE Hotel, KAMPONGSOM, CAMBODIA (The renovation)
- LITTLE DUCK HOTEL, Chiang-Rai
- DELTA GRAND PACIFIC Hotel
- SIAM BALLROOM Phase 2 (Siam Intercontinental Hotel)
- SOL TWIN Towers
- BAAN BORAN Chiang-Rai Hotel
- SALA Samui Resort
- SIRIPANNA Chiang-Mai Phase II
- Ambassador Hotel (the renovation)



PROJECT REFERENCE

Hotels



- Project Title : **HOTEL SOI SOONVIJAI**
- Location : Soi soonvijai, Bangkok
- Owner : บริษัท อควาเรียส โฮเทล แอนด์ รีสอร์ท จำกัด
- Commissioned : 2015-2016
- Project Summary : Building A area is estimated at 3,800 sq.m.
Building B area is estimated at 3,500 sq.m.
Building C area is estimated at 3,900 sq.m.
Total construction area is 11,200 sq.m.
- Construction Cost : 200 millions Baht
- Firm's Role : M&E System Design: Air-conditioning, Ventilating, Electrical Power, Lighting, Telecommunication, Fire Alarm, Building Management, CCTV, Gas piping, Hot water generation, Fire Fighting, Waste water treatment, Recycle water, Irrigation Pool Support, Public announcement, Vertical Transportation and Security System.
- Civil and Structural design



PROJECT REFERENCE

Hotels



Project Title	:	PATONG SAI 3
Location	:	Patong, Thailand
Owner	:	Boutique Asset Management Ltd
Commissioned	:	2015-2017
Project Summary	:	Approx. 180 to 200 keys ,8 level structure, 2 levels underground basement , First level underground basement to contain Back of House offices. Roof top to have large resort type pool with Commercial kitchen/restaurant and bar/lounge to give resort feel (if inadequate space then we will move commercial kitchen to basement) .Construction area is estimated at 10,000 sq.m.
Construction Cost	:	450 millions Baht
Firm's Role	:	M&E System Design: Air-conditioning, Ventilating, Electrical Power, Lighting, Telecommunication, Fire Alarm, Building Management, CCTV, Gas piping, Hot water generation, Fire Fighting, Waste water treatment, Recycle water, Irrigation Pool Support, Public announcement, Vertical Transportation and Security System. Civil and Structural design



PROJECT REFERENCE

Hotels



Project Title	:	IBIS Hotel
Location	:	Prakhanong area, Bangkok
Owner	:	Apollo Estate Co., Ltd..
Commissioned	:	2014 - 2016
Project Summary	:	Construction area is estimated at 16,870 sq.m.
Construction Cost	:	800 millions Baht
Firm's Role	:	M&E System Design: Air-conditioning, Ventilating, Electrical Power, Lighting, Telecommunication, Fire Alarm, Building Management, CCTV, Gas piping, Hot water generation, Fire Fighting, Waste water treatment, Recycle water, Irrigation Pool Support, Public announcement, Vertical Transportation and Security System.
		Civil and Structural design



PROJECT REFERENCE

Hotels



- Project Title : **BANGKOK MARRIOTT HOTEL Queen's Park**
- Location : Sukhumvit, Bangkok
- Owner : TCC Hotel Group
- Commissioned : 2015 - 2017
- Project Summary : a 800 rooms, 140,000 sq.m.-Hotel Rebranded to Marriott Hotel
- Construction Cost : 3,000 Million Baht (Refurbish work)
- Firm's Role : M&E System Design: Air-conditioning, Ventilating, Electrical Power, Lighting, Telecommunication, Fire Alarm, CCTV, Fighting , Hot water and BMS.



Civil and Structural design



PROJECT REFERENCE

Hotels



- Project Title : **HILTON SUKHUMVIT BANGKOK**
- Location : Sukhumvit soi 24, Bangkok
- Owner : TCC Group
- Commissioned : 2006-2013
- Project Summary : a 30,000 sq.m. hotel and retailed spaces.
- Construction Cost : est. 52 millions USD
- Firm's Role : M&E System Design: Air-conditioning, Ventilating, Electrical Power, Lighting, Telecommunication, Fire Alarm, Building Management, CCTV, Hot water generation, Fire Fighting, Waste water treatment, Security System and Vertical Transportation.



- Project Title : **DOUBLE TREE
by HILTON**
- Location : Sukhumvit 24, Bangkok
- Owner : TCC Group
- Commissioned : 2010-2013
- Project Summary : Redevelopment of TARA Hotel. 196 room with meeting rooms and its ancillary facilities
Construction area est. 13,650 sq.m.
- Construction Cost :
- Firm's Role : M&E System Design: Air-conditioning, Ventilating, Electrical Power, Lighting, Telecommunication, Fire Alarm, Access Control, CCTV, Fire Fighting, Waste water treatment, Recycle water , Irrigation, Pool Support, Security System, BAS, Vertical Transportation.



PROJECT REFERENCE

Hotels



Project Title : **INTER CONTINENTAL HUA HIN**

Location : Hua Hin, Prachuabkirikan

Owner : Proud Resort Hua Hin Co., Ltd.

Commissioned : 2007

Project Summary : 5-star Hotel and Resort 100 keys (24,000 sq.m.)

Construction Cost : est. 36 millions USD

Firm's Role : M&E System Design: Air-conditioning, Ventilating
Electrical Power, Lighting, Telecommunication
Fire Alarm, Building Management, CCTV
Hot Water Generation, Fire Fighting, Waste Water
Treatment, Security System and Vertical Transportation



PROJECT REFERENCE

Hotels



Project Title : **W RETREAT AND RESIDENCES**

Location : Koh Samui, Suratthani

Owner : Amburaya Hotel and Resort

Commissioned : 2009

Project Summary : A Resort Hotel situated at Northern Samui, comprising Hotel portions and Residences

Construction Cost : est. 58 millions USD

Firm's Role : M&E System Design: Air-conditioning, Ventilating, Electrical Power Lighting, Telecommunication, Fire Alarm, Building Management CCTV, Hot Water Generation, Fire Fighting, Waste Water Treatment Irrigation Security System and Vertical Transportation



PROJECT REFERENCE

Hotels



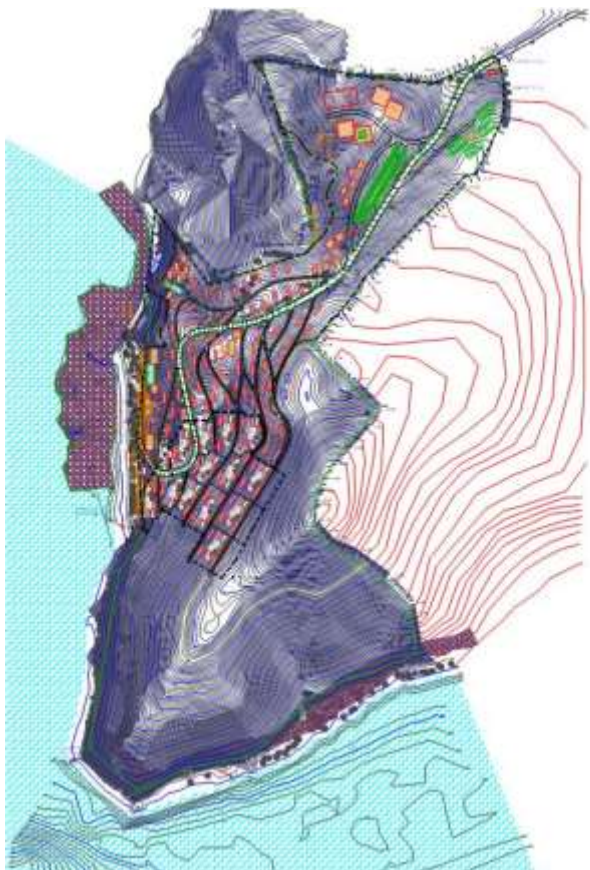
BANYAN TREE
HOTELS
AND RESORTS

- Project Title : **BANYAN TREE Resort and Spa**
- Location : Koh Samui, Suratthani
- Owner : TCC Group of companies
- Commissioned : 2008
- Project Summary : 69 Rais of Land with 2 distinctive Villas
- Construction Cost : est. 1,600 millions Baht
- Firm's Role : M&E System Design: Air-conditioning, Ventilating, Electrical Power, Lighting, Telecommunication, Fire Alarm, Security, CCTV, Plumbing, Fire Fighting and Sanitary Dumbwaiter System.



PROJECT REFERENCE

Hotels



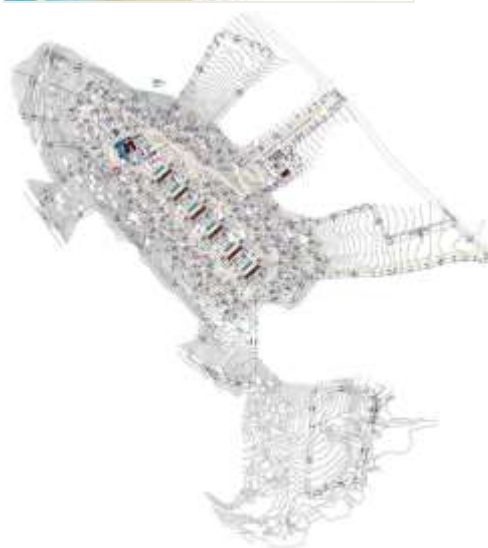
Project Title	:	CAPE NGA RESORT
Location	:	Phuket
Owner	:	Cape Nga Development Co., Ltd.
Commissioned	:	2010
Project Summary	:	60 Pool Villas, 10 residences (5 keys each) area 90 rais
Construction Cost	:	Est. 1,600 million baht
Firm's Role	:	M&E System Design: Air-conditioning, Ventilating, Electrical Power Lighting, Telecommunication, Fire Alarm, Building Management CCTV, Gas Piping, Hot Water Generation, Fire Fighting, Waste Water Treatment, Recycle water, Irrigation Pool Support, Public Announcement Vertical Transportation and Security System.

PARK HYATT™
PARK
HYATT



PROJECT REFERENCE

Hotels



- Project Title : **PARK HYATT Hotel and Residences**
- Location : Koh Samui, Suratthani
- Owner : Proud Resorts Koh Samui Co., Ltd.
- Commissioned : 2009
- Project Summary : 25,000 sq.m. of Hotel and Residence Villas
- Construction Cost : est. 60 millions USD
- Firm's Role : M&E System Design: Air-conditioning, Ventilating
Electrical Power, Lighting, Telecommunication
Fire Alarm, Building Management, CCTV, Gas piping
Hot water generation, Fire Fighting, Waste water treatment
Recycle water, Irrigation Pool Support and Security System.

PARK HYATT™
PARK
HYATT



PROJECT REFERENCE

Hotels



Project Title : **WESTIN GRANDE SUKHUMVIT**

Location : Sukhumvit Road, Bangkok.

Owner : Sukhumvit Centre Co., Ltd. (P.S Real Estate Group)

Commissioned : 1992

Project Summary : Site Area: 74,633 sq.m. 25-Storey, 420-Room Hotel.

Firm's Role : M&E System Design: Air-conditioning, and Ventilating System.

WESTIN
HOTELS & RESORTS



Project Title : **HOTEL PLAZA ATHENE**
(a Royal Meridien hotel)

Location : Wireless Road, Bangkok.

Owner : Imperial Hotel Pcl.

Commissioned : 2000

Project Summary : Site Area: 50,000 Sq.m., 28-storey, 400-room
Five Star Hotel.

Firm's Role : M&E System Design: Air-conditioning and Ventilating System
Electrical Power, Lighting, Telecommunication, Fire Alarm
Security CCTV, Vertical Transportation, Fire Protection
Plumbing, Fire Fighting and Sanitary System.



PROJECT REFERENCE

Hotels



Project Title	:	AMARI WATERGATE Hotel 2013 renovation
Location	:	Pratunam, Bangkok
Owner	:	ONYX Hospitality Group Co., Ltd.
Commissioned	:	2012-2013
Project Summary	:	All Day Dining area est. 1,200 sq.m., 6 fl., 8 fl., Sukhothai & Ayudhaya suite and Gym area
Construction Cost	:	-
Firm's Role	:	M&E System Design: Air-conditioning, Ventilating, Electrical Power, Lighting, Telecommunication, Fire Alarm, CCTV, Fighting, Waste water treatment, Storm Drainage
		Construction Supervision Work



PROJECT REFERENCE

Hotels



Project Title : **SHERATON GRAND LAGOON**
(Rebranded to ANGSANA)

Location : Phuket, Thailand

Owner : Bangtao Grande Limited

Commissioned : 2011

Project Summary : Re-brand of existing hotel facilities to be Angsana Hotel

Construction Cost : -

Firm's Role : M&E System Design: Air-conditioning, Ventilating, Electrical Power, Lighting, Telecommunication, Fire Alarm, CCTV, Gas piping, Hot water generation, Fire Fighting, Waste water treatment and Security System.

Project Title : **MARRIOTT RAYONG**
Phuphatara

Location : Rayong, Thailand

Owner : Vilailuk Properties Co., Ltd.

Commissioned : 2010

Project Summary : a 30,000 sq.m. of 5-stars Hotel building.

Construction Cost : est. 55 millions USD

Firm's Role : M&E System Design: Air-conditioning, Ventilating, Electrical Power, Lighting, Telecommunication, Fire Alarm, Building Management, CCTV, Gas piping, Hot water generation, Fire Fighting, Waste water treatment, Recycle water, Irrigation Pool Support and Security System.



PROJECT REFERENCE

Hotels



- Project Title : **MANDARIN ORIENTAL** The Renovation
Back of House, Main Lobby
- Location : Bangkok
- Owner : Mandarin Oriental Hotel
- Commissioned : 2010
- Project Summary : Renovation for 5 stars Hotel
- Construction Cost :
- Firm's Role : M&E System Design: Air-conditioning, Ventilating
Plumbing, Sanitary, Electrical Power, Lighting, Telecommunications
CCTV, Fire Alarm and Building Automation System.



PROJECT REFERENCE

Hotels



Project Title : **HOLIDAY INN PATTAYA**

Location : Pattaya, Chonburi

Owner : Erawan Group

Commissioned : 2008

Project Summary : a 30,000-sq.m. Hotel

Construction Cost : est. 46 millions USD

Firm's Role : M&E System Design: Air-conditioning Ventilating
Electrical Power, Lighting, Telecommunication
Fire Alarm, Building Management, CCTV, Hot Water Generation
Fire Fighting, Waste water treatment, Security System and
Vertical Transportation.



Project Title : **TWIN LOTUS HOTEL**

Location : Pattanakarn-Kukwang Road, Nakhonsithammarat.

Owner : Southern B.M. Co., Ltd.

Commissioned : 1996

Project Summary : Site Area: 420-Room, 18-Storey Building.

Firm's Role : M&E System Design: Air-conditioning, Ventilating, Electrical Power,
Lighting, Telecommunication, Fire Alarm, Security, CCTV,
Vertical Transportation, Plumbing and Sanitary System.



PROJECT REFERENCE

Hotels



- Project Title : **FOUR SEASON HOTEL**
- Location : Ratchadamri Road, Bangkok, Thailand
- Owner : Regent Hotel Co., Ltd.
- Commissioned : 1985
- Project Summary : Site Area: 400-Room Hotel and Shopping Arcade.
- Firm's Role : M&E System Design: Air-conditioning, Ventilating
Electrical Power, Lighting, Telecommunication
Fire Alarm and Vertical Transportation System



FOUR SEASONS
Hotels and Resorts



- Project Title : **JW MARRIOTT HOTEL**
- Location : Ploenchit Road, Bangkok.
- Owner : Amarin Plaza Group.
- Commissioned : 1997
- Project Summary : Site Area: 140,000 Sq.m.,
Five Star Hotel, Shopping Arcade,
and Office Building.
- Firm's Role : M&E System Design: Air-conditioning,
and Ventilating System



JW MARRIOTT
HOTELS & RESORTS



PROJECT REFERENCE

Hotels



- Project Title : **LE MERIDIEN BANGKOK**
- Location : Surawongse Road, Bangkok
- Owner : TCC Group
- Commissioned : 2007
- Project Summary : 32,000 sq.m. of hotel building.
- Construction Cost : est. 52 millions USD
- Firm's Role : M&E System Design: Air-conditioning, Ventilating, Plumbing, Sanitary, Electrical Power, Lighting, Telecommunications, CCTV, Fire Alarm and Building Automation System.




- Project Title : **S 31**
- Location : Sukhumvit Road, Bangkok
- Owner : -
- Commissioned : 2008
- Project Summary : a 30,000 sq.m. hotel and retailed spaces.
- Firm's Role : M&E System Design: Air-conditioning, Ventilating, Electrical Power, Lighting, Telecommunication, Fire Alarm, Building Management, CCTV, Hot water generation, Fire Fighting, Waste Water Treatment, Security System and Vertical Transportation.




PROJECT REFERENCE

Hotels



- Project Title : **AMARA BANGKOK HOTEL**
- Location : Suriwong Rd., Bangkok
- Owner : AMARA Hospitality (Thailand) Co., Ltd.
- Commissioned : 2010
- Project Summary : Hotel 28-storey high rise,
land area 2,180 sq.m. and
construction area est. 21,800 sq.m.
- Construction Cost : -
- Firm's Role : M&E System Design: Air-conditioning, Ventilating, Electrical Power,
Lighting, Telecommunication, Fire Alarm, CCTV, Access Control,
Fire Fighting, Waste water treatment, Site Drainage, Pool Support,
Security System and Vertical Transportation.



- Project Title : **CROWNE PLAZA**
- Location : Sukhumvit Road, Bangkok
- Owner : Grande Asset Development Public Co., Ltd.
- Commissioned : 2007 (under construction)
- Project Summary : 40,000 sq.m. of hotel building
- Construction Cost : est. 52 millions USD
- Firm's Role : M&E System Design: Air-conditioning, Ventilating, Plumbing,
Sanitary, Electrical Power, Lighting, Telecommunications, CCTV,
Fire Alarm and Building Automation System.



PROJECT REFERENCE

Hotels



Project Title : **MODE SATHORN HOTEL**
by SIAM @ SIAM

Location : Bangkok

Owner : K2 Land Co., Ltd.

Commissioned : 2010

Project Summary : Hotel 200 keys, 35-storey high, GFA 30,000 sq.m.

Construction Cost : -

Firm's Role : M&E System Design: Air-conditioning, Ventilating, Electrical Power, Lighting, Telecommunication, Fire Alarm, Access Control, CCTV, Fire Fighting, Waste water treatment, Recycle water,Irrigation, Pool Support, Security System, BAS, Vertical Transportation.



Project Title : **SUMMIT WINDMILL Redevelopment**
Le Meridien Hotel and Services Apartment

Location : Bang-Na Trad Rd., Bangkok

Owner : Summit Windmill Golf Club

Commissioned : 2008

Project Summary : 5-star Hotel and Service Apartment

Construction Cost : est. 46 millions USD

Firm's Role : M&E System Design: Air-conditioning, Ventilating, Electrical Power, Lighting, Telecommunication, Fire Alarm, Building Management, CCTV, Hot Water Generation, Fire Fighting, Building Automation, Waste Water Treatment, Security System and Vertical Transportation.



PROJECT REFERENCE

Hotels



- Project Title : **BAIYOKE SKY HOTEL**
Currently the tallest building in Thailand
- Location : Pratunam, Petchburi Road, Bangkok.
Owner : Phoomiphawan Co.,Ltd.
Commissioned : 1995
Project Summary : Site Area: 159,920 sq.m., 1,000 Room Hotel, 87 Storeys High.
- Firm's Role : M&E System Design: Air-conditioning, Ventilating, Electrical Power Lighting, Telecommunication, Fire Alarm, Security, CCTV Vertical Transportation, Plumbing, and Sanitary System.

PROJECT REFERENCE

Hotels



Project Title : **GRAND HYATT ERAWAN HOTEL**

Location : Ratchadamri Road, Bangkok.

Owner : Erawan Hotel Co., Ltd.

Commissioned : 1991

Project Summary : Site Area: 50,000 sq.m. 425-Room Five Star Hotel.

Firm's Role : M&E System Design: Air-conditioning, Ventilating, Electrical Power, Telecommunication, Vertical Transportation, and Lighting System.



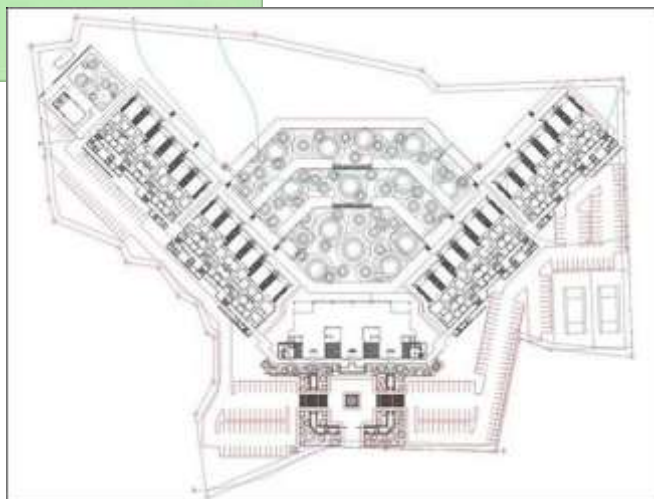
PROJECT REFERENCE

Hotels



Hotel

Project Title	: AMTHADA Hotel and Residence
Location	: Phuket, Thailand
Owner	: -
Commissioned	: 2011
Project Summary	: Hotel (20,000 sq. m.). Residences (40,000 sq. m.)
Construction Cost	: 1,600 millions baht
Firm's Role	: M&E System Design: Air-conditioning, Ventilating, Electrical Power, Lighting, Telecommunication, Fire Alarm, CCTV, Fighting, Waste water treatment, Storm Drainage
	: Civil and Structural design



Condominium



PROJECT REFERENCE

Hotels



Project Title : **BAAN BORAN CHIANG SAEN**
(ANANTARA GOLDEN TRIANGLE)

Location : Golden Triangle, Chiangsaen
 Owner : -
 Commissioned : 1992
 Project Summary : 110-room resort
 Firm's Role : M&E System Design: Air-conditioning, Ventilating, Electrical Power, Lighting, Telecommunication, Fire Alarm, Plumbing and Sanitary System.



Project Title : **SIRIPANNA CHIANGMAI PHASE II**

Location : Chiangmai
 Owner : Siripanna Resort and Spa Co., Ltd.
 Commissioned : 2008
 Project Summary : 2,000 sq.m.
 Firm's Role : M&E System Design: Air-conditioning, Ventilating, Electrical Power, Lighting, Telecommunication, Fire Alarm, CCTV, Access Control, Fire Fighting, Waste water treatment, Storm Drainage, Security System and Vertical Transportation.



Project Title : **GRAND HYATT ERAWAN BANGKOK**

Location : Ratchaprasong Square
 Owner : Amarin Plaza Groups
 Commissioned : 2005
 Project Summary : Renovation of the residence meeting area and pool deck with urban resort style villas
 Construction Cost : est. 55 millions USD
 Firm's Role : Mechanical and Electrical engineering
 Associated Firms : Jirat and Associates Co., Ltd.
 Tonichi and Associates (newyork)



PROJECT REFERENCE

Hotels



Project Title : **SHERATON GRANDE LAGOON HUA HIN**
Hotel Portion

Location : Hua Hin, Prachuabkirikan
Owner : Grande Asset Development Public Co., Ltd.
Commissioned : 2006
Project Summary : 40,000 sq.m. of hotel building.
Firm's Role : M&E System Design: Air-conditioning, Ventilating
Plumbing, Sanitary, Electrical Power, Lighting
Telecommunication, CCTV, Fire Alarm.



Project Title : **LAGUNA BEACH RESORT** (part of LAGUNA Phuket)

Location : Phuket Island
Owner : Thaiwah group
Commission : 1992
Project Summary : 250-room 5-star luxury resort on 20 acres of land.
Firm's Role : M&E System Design: Air-conditioning, Ventilatilation,
Electrical Power, Lighting, Telecommunication,
Fire Alarm, Plumbing and Sanitary System.



PROJECT REFERENCE

Hotels



Project Title : **HOLIDAY INN HOTEL**

Location : Chiangmai

Commissioned : 1995

Project Summary : 250-Room Hotel

Firm's Role : M&E System Design: Air-conditioning, Ventilating, Electrical Power, Lighting, Telecommunication, Fire Alarm, Security, CCTV, Vertical Transportation, Plumbing, Fire Fighting and Sanitary System.



Project Title : **HOLIDAY INN Regent Beach Cha-Am**

Location : Cha-Am, Petchaburi

Owner : Regent Hotel Group

Commissioned : 2007

Project Summary : Re-brand of existing hotel facilities to be Holiday Inn hotel & Resort

Firm's Role : M&E System Design: Air-conditioning, Ventilating, Electrical Power, Lighting, Telecommunication, Fire Alarm, Building Management, CCTV, Hot Water Generation, Fire Fighting, Waste Water Treatment and Security System.



PROJECT REFERENCE

Hotels




Project Title : **THE SAIL PATTAYA**
Le Meridien Hotel and Condominium

Location : Jomthien, Pattaya

Owner : Grande Asset Development Pcl.

Commissioned : 2008

Project Summary : Five-star Hotel and Condominium
(35,000 sq.m.)

Construction Cost : est. 65 millions USD

Firm's Role : M&E System Design: Air-conditioning, Ventilating, Electrical Power, Lighting, Telecommunication, Fire Alarm, Building Management, CCTV, Hot water generation, Fire Fighting, Waste water treatment, Security System and Vertical Transportation.



Project Title : **MERCURE** Ambassador hotel

Location : Bangkok, Thailand

Owner : The Ambassador group

Commissioned : 2007

Project Summary : Re-brand of existing hotel facilities to be Mercure hotel, part of ACCOR group

Firm's Role : M&E System Design: Air-conditioning, Ventilating, Electrical Power, Lighting, Telecommunication, Fire Alarm, Building Management, CCTV, Hot water generation, Fire Fighting and Security System.



PROJECT REFERENCE

Hotels



Project Title : **SIAM CITY HOTEL**

Location : Sri Ayudthaya Rd., Bangkok

Owner : Siam Thani Hotel

Commissioned : 1988

Project Summary : 20-Storey Hotel Tower

Firm's Role : M&E System Design: Air-conditioning, Ventilating, Electrical Power, Lighting, Telecommunication, Fire Alarm and Vertical, Transportation System.



Project Title : **METROPOLE HOTEL**

Location : Phuket

Owner : Prapitak Hotel

Project Summary : 18-Storeys hotel building

Firm's Role : M&E System Design: Air-conditioning, Ventilating, Electrical Power, Lighting, Telecommunication, Fire Alarm and Vertical Transportation System



Project Title : **SOL TWIN TOWERS**

Location : Rama VI Road, Bangkok.

Owner : Golden Asset Co., Ltd.

Commissioned : 1994

Project Summary : 700-Room Hotel

Firm's Role : M&E System Design: Air-conditioning, Ventilating, Electrical Power, Lighting, Telecommunication, Fire Alarm and Vertical Transportation System.



PROJECT REFERENCE

Hotels



Project Title	:	IMPERIAL BOAT HOUSE Resort (the Renovation)
Location	:	Samui Island, Suratthani Thailand
Owner	:	Hotel Group Service (Thailand) Co., Ltd.
Commissioned	:	2013-2014
Project Summary	:	3-storey resort hotel of 210 keys, Land area of 29,792 sq.m. GFA approx. 21,000 sq.m.
Construction Cost	:	-
Firm's Role	:	M&E System Design: Air-conditioning, Ventilating Electrical Power, Lighting, Telecommunication, Fire Alarm, Building Management, CCTV, Gas piping, Hot water generation, Fire Fighting, Waste water treatment, Irrigation Pool Support and Security System.



Project Title	:	IMPERIAL SAMUI BEACH Resort (the Renovation)
Location	:	Samui Island, Suratthani Thailand
Owner	:	Hotel Group Service (Thailand) Co., Ltd.
Commissioned	:	-
Project Summary	:	3-storey Hotel 141 keys, Land area of 34,964 sq.m. GFA approx. 40,000 sq.m.
Construction Cost	:	-
Firm's Role	:	M&E System Design: Air-conditioning, Ventilating Electrical Power, Lighting, Telecommunication, Fire Alarm, Building Management, CCTV, Gas piping, Hot water generation, Fire Fighting, Waste water treatment, Irrigation Pool Support and Security System.



PROJECT REFERENCE

Hotels



Project Title : **SALA SAMUI RESORT**
 Location : Samui Island
 Owner : Sala Samui Co., Ltd.
 Commissioned : 2004
 Project Summary : Resort with Luxury Villas, Suites totaling 70 units.
 Firm's Role : M&E System Design: Air-conditioning, Ventilating, Electrical Power, Lighting, Telecommunication, Fire Alarm, Fire Fighting, Plumbing and Sanitary System.



Project Title : **FISHERMAN'S VILLEGE**
 Location : Pethchburi
 Commissioned : 2003
 Firm's Role : Design of Plumbing, Fire Fighting, Waste treatment, Site Drainage and Sanitary System.



Project Title : **DUSIT AND RESORT HOTEL**
 Location : Hua-Hin
 Owner : Dusit Hotel Plc.
 Commissioned : -
 Project Summary : -
 Firm's Role : M&E System Design: Air-Conditioning and Ventilating System.





W. AND ASSOCIATES



PROJECT REFERENCES

OFFICES



CURRENT PROJECTS

- PARKING GARAGE DESIGN 4 BUILDING (Chiang Mai University)
- COSMO OFFICE
- STOCK EXCHANGE OF THAILAND
- HTOO TRADING OFFICE
- MYINT & ASSOCIATE OFFICE TOWER
- THAI INSURANCE OFFICE
- OFFICE @ ASOKE

PAST PROJECTS

- SIAM COMMERCIAL COMPLEX (PHASE III)
- SIAM COMMERCIAL BANK (Old Head Quarter)
- BANK OF ASIA (Head Quarter)
- KRUNGTHAI BANK (Head Quarter)
- THAI AIRWAY INTERNATIONAL (Head Quarter)
- SHELL BUILDING (Head Quarter)
- MALEENOND TOWER
- ESSO TOWER (Head Quarter)
- ELEPHANT BUILDING
- THE NATION TOWER I, II
- UNITED CENTER
- CTI TOWER
- GRAND AMARIN TOWER
- WALL STREET TOWER
- SIRIPINYO BUILDING
- SSP TOWER III
- SAMAGGI TOWER
- I.F.C.T. BUILDING
- SRIJULSUP TOWER
- BEAUTY GEMS BUILDING
- THAI LIFE INSURANCE
- VILLA OFFICES
- THE MALAYSIAN EMBASSY
- THE PRIVY COUNCIL OFFICE
- MINISTRY OF FINANCE OFFICE
- THE MINISTRY OF FOREIGN AFFAIRS OFFICE
- THE UNITED NATIONS – ESCAP
- BANK NOTE PRINTING PLANT
- METROPOLITAN ELECTRICITY AUTHORITY
- THE PARLIAMENT BUILDING
- LE CONCORDE OFFICE TOWER



CURRENT PROJECTS

Offices



- Project Title : **STOCK EXCHANGE OF THAILAND**
(New Headquarters)
- Location : Rachadapisek Road., Bangkok
Owner : The Stock Exchange of Thailand
Commissioned :
Project Summary : 59,000 sq.m. Office Building
Construction Cost : est. 400 million baht
Firm's Role : M&E System Design: Air-conditioning, Ventilating,
Electrical Power, Lighting, Telecommunication,
Fire Alarm, CCTV, Access Control, Fire Fighting,
Waste water treatment, Storm Drainage, BAS,
Security System and Vertical Transportation.



CURRENT PROJECTS

Offices



Project Title : **PARKING GARAGE DESIGN (4 BUILDINGS)**
(Chiang Mai University)

Location : Chiang Mai, Thailand
Owner : Chiang Mai University
Commissioned : 2014-2016

Project Summary : Parking Garage design 4 building. Total construction area is estimated at 3,750 sq.m.

Construction Cost : est. 900 million baht

Firm's Role : M&E System Design: Air-conditioning, Ventilating, Electrical Power, Lighting, Telecommunication, Fire Alarm, CCTV, Fire Fighting, Waste water treatment, Storm Drainage, Security System and Vertical Transportation.

Civil and Structural design



CURRENT PROJECTS

Offices



Project Title	:	OFFICE@ASOKE
Location	:	Asoke Road., Bangkok
Owner	:	Bangkok Boutique Hotel (Thailand) Co., Ltd.
Commissioned	:	2012
Project Summary	:	Office 30 stories, Basement 3 stories and Car Park 10 stories, Basement 2 stories
Construction Cost	:	-
Firm's Role	:	M&E System Design: Air-conditioning, Ventilating, Electrical Power, Lighting, Telecommunication, Fire Alarm, CCTV, Access Control, Fire Fighting, Waste water treatment, Recycle water, Irrigation, Security System , Master Clock System and Vertical Transportation.



CURRENT PROJECTS

Offices



Project Title : **MYINT & ASSOCIATE OFFICE TOWER**

Location : PYAY Road, Myanmar

Owner : Mynt Associates

Commissioned : 2010

Project Summary : 29,900 sq.m. Office Building

Construction Cost : est. 170 million baht

Firm's Role : M&E System Design: Air-conditioning, Ventilating, Electrical Power, Lighting, Telecommunication, Fire Alarm, CCTV, Access Control, Fire Fighting, Waste water treatment, Storm Drainage, BAS, Security System and Vertical Transportation.



Project Title : **THAI INSURANCE OFFICE**

Location : Samutprakarn Road

Owner : Thai Life Insurance Co., Ltd.

Commissioned : July 2013 – January 2015

Project Summary : Construction area est. 31,350 sq.m., Office Building

Construction Cost : 700,000,000.00 Baht

Firm's Role : M&E System Design: Air-conditioning, Ventilating, Electrical Power, Lighting, Telecommunication, Data cabling, Fire Alarm, Public Address and Background Music (sound), Master Antenna Television, Access Control, CCTV, Fire Fighting, Waste water treatment, Recycle water, Irrigation, Pool Support, Security System, Vertical Transportation.



CURRENT PROJECTS

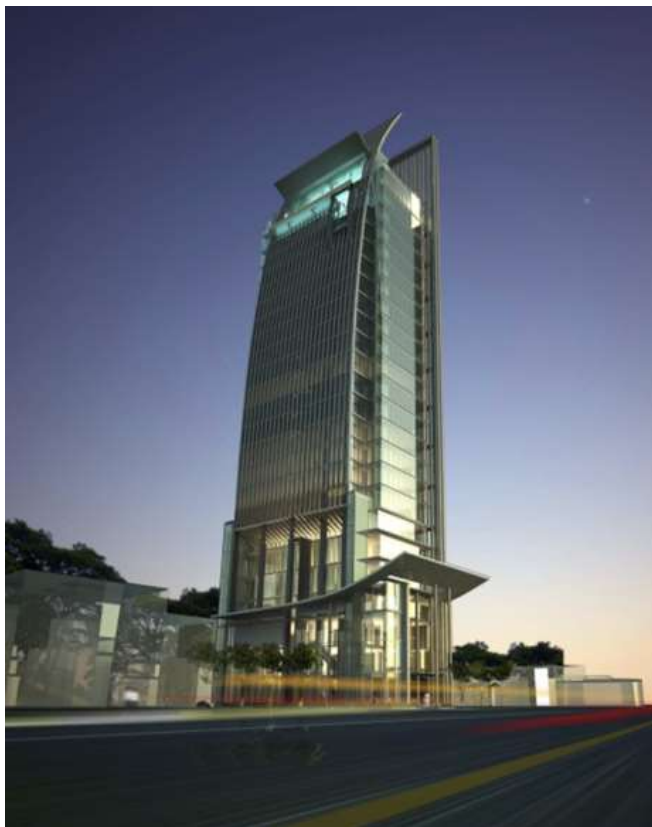


- Project Title : **THAIRATH TV & SOUND STUDIO**
- Location : Vibhavadee-Rangsit Rd., Bangkok
- Owner : Vacharapol Co., Ltd.
- Commissioned : -
- Project Summary : 12 -Storey building with separated 1,500 Sq.M. BOH building for chiller plant, transformer and generator house to back up. Comprising of 3 Studio & Control Room, Office area and residence penthouse at the most top floor.
- Construction Cost : -
- Firm's Role : M&E System Design: Air-conditioning, Ventilating, Electrical Power, Lighting, Telecommunication, Fire Alarm, CCTV, MATV, Access Control, Fire Fighting, Waste water treatment, Recycle Water, Irrigation, Security System , Master Clock System and Vertical Transportation.



CURRENT PROJECTS

Offices



Project Title : **HTOO TRADING OFFICE**

Location : Yagon, Myanmar

Owner : Htoo Trading Co.,Ltd.

Commissioned : 2011

Project Summary : 40,000 sq.m. Office Building

Construction Cost : est. 220 million baht

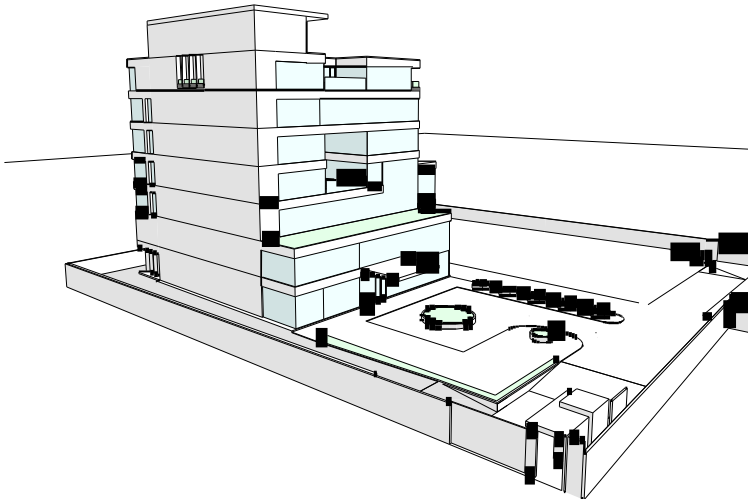
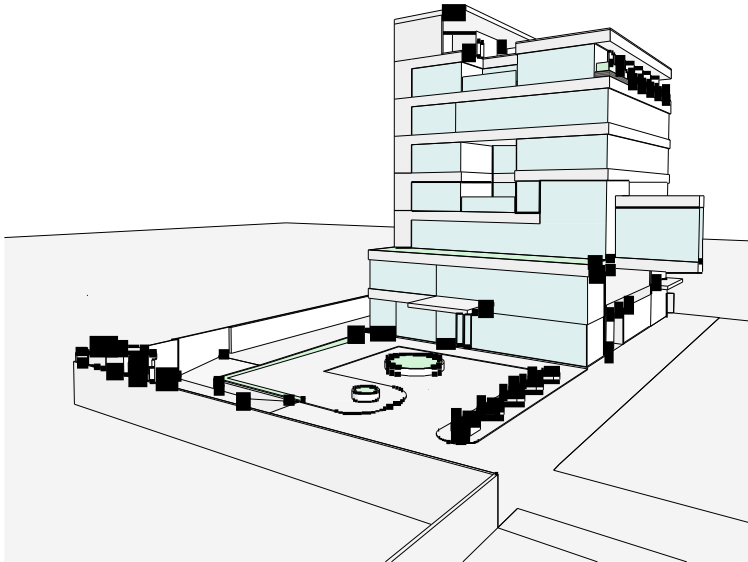
Firm's Role : M&E System Design: Air-conditioning, Ventilating,
Electrical Power, Lighting, Telecommunication, Fire Alarm,
CCTV, Fighting, Waste water treatment, Storm Drainage,

Civil and Structural design



CURRENT PROJECTS

Offices



Project Title : **COSMO OFFICE**
Location : Sukhumvit 97-97/1, Bangkok
Owner : Cosmo Group
Commissioned : 2014 - 2016
Project Summary : 8-storey office building with 2 Basement. Estimated area is 8,00 sq.m.

Construction Cost : 220 million Baht

Firm's Role : M&E System Design: Air-conditioning, Ventilating, Electrical Power, Lighting, Telecommunication, Fire Alarm, CCTV, Access Control, Fire Fighting, Waste water treatment, Storm Drainage, BAS, Security System and Vertical Transportation.

Civil and Structural design



PAST PROJECTS

Offices



- Project Title : **SIAM COMMERCIAL COMPLEX (PHASE III)**
- Location : Ratchadapisek Rd., Bangkok
- Owner : Mahisorn Co.,Ltd.
- Commissioned : 1995
- Project Summary : Site Area: 104,850 Sq.m. 26-Storey Office Building and Shop.
- Firm's Role : M&E System Design: Air-conditioning, Ventilating, Plumbing, Sanitary, Electrical Power, Lighting, Telecommunications, CCTV, Fire Alarm and Building Automation System.



- Project Title : **SIAM COMMERCIAL BANK (Old Head Quarter)**
- Location : Petchburi Rd., Bangkok
- Owner : Siam Commercial Bank Public Company Limited.
- Commissioned : -
- Project Summary : Office Building.
- Firm's Role : M&E System Design: Air-conditioning, Ventilating, Electrical Power, Lighting, Telecommunication, Fire Alarm, Security and CCTV.



PAST PROJECTS



 Offices


- Project Title : **THAI AIRWAY INTERNATIONAL (Head Quarter)**
- Location : Viphavadi-Rangsit Rd., Bangkok
- Owner : Thai Airway International Plc.
- Commissioned : 1987
- Project Summary : Site Area: 23,550 Sq.m., Building Area : 50,000 Sq.m. 23-Storey Office Building.
- Firm's Role : M&E System Design: Air-conditioning, Ventilating, Electrical Power, Lighting, Telecommunication, Fire Alarm, CCTV and Vertical Transportation System.



- Project Title : **SHELL BUILDING (Head Quarter)**
- Location : Bangkok
- Owner : -
- Project Summary : 8-Storey Office Building.
- Firm's Role : M&E System Design: Air-conditioning and Ventilating System.



PAST PROJECTS


 Offices


Project Title : **BANK OF ASIA (Head Quarter)**
 Location : Sathorn Road, Bangkok.
 Owner : Asia Property Co., Ltd.
 Commissioned : 1986
 Project Summary : Site Area: 23,000 sq.m., 20-Storey Office Building.
 Firm's Role : M&E System Design: Air-conditioning and Ventilating System.



Project Title : **KRUNGTHAI BANK (Head Quarter)**
 Location : Sukhumvit Rd., Bangkok
 Owner : Krungthai Bank Public Company Limited.
 Commissioned : 1978
 Project Summary : Site Area: 39,000 Sq.m., 15-Storey Office Building.
 Firm's Role : M&E System Design: Air-conditioning, Ventilating, Electrical Power, Lighting, Telecommunication, Fire Alarm and Security System.



PAST PROJECTS

Offices



- Project Title : **ELEPHANT BUILDING**
- Location : Phaholyothin Road, Bangkok.
- Owner : Thammathani Co., Ltd.
- Commissioned : 1996
- Project Summary : Site Area: 130,000 Sq.m., Two 31-Storeys Office Tower, 31-Storeys Condominium.
- Firm's Role : M&E System Design: Air-conditioning, Ventilating, Electrical Power, Lighting, Telecommunication, Fire Alarm, Security, CCTV, Vertical Transportation, Plumbing and Sanitary System.



- Project Title : **MALEENOND TOWER**
- Location : Rama IV Road, Bangkok.
- Owner : M-Tower Co., Ltd.
- Commissioned : 2004
- Project Summary : Building Area 140,000 Sq.m., 36-Stories Building comprises of Studio and Office area
- Construction Cost : est. 2,400 million baht
- Firm's Role : M&E System Design: Air-conditioning, Ventilating, Electrical Power, Lighting, Telecommunication, Fire Alarm, Vertical Transportation, Plumbing, Fire Fighting and Sanitary System.



PAST PROJECTS


 Offices


Project Title : **THE NATION TOWER I, II**
 Location : Bangna-Trad Road, Bangkok.
 Owner : Nation Properties Co., Ltd.
 Commissioned : 1994
 Project Summary : Site Area: 83,000 Sq.m., 44-Storeys Office Building.
 Firm's Role : M&E System Design: Air-conditioning and Ventilating System.



Project Title : **ESSO TOWER (Head Quarter)**
 Location : Rama IV road
 Owner : Esso Thailand.
 Project Summary : 22-Storey Office Building.
 Firm's Role : M&E System Design: Air-conditioning, Ventilating,
 Electrical Power, Lighting, Telecommunication,
 Fire Alarm, Security, CCTV, Vertical Transportation,
 Building Automation, Plumbing and Sanitary System.



PAST PROJECTS


 Offices


- Project Title** : **JEWELRY TRADE CENTER**
- Location** : Silom Road, Bangkok.
- Owner** : Jewelry Realty Co., Ltd.
- Commissioned** : 1995
- Project Summary** : Site Area: 150,000 Sq.m., 56-Stories Building.
- Firm's Role** : M&E System Design: Air-conditioning, Ventilating, Electrical Power, Lighting, Telecommunication, Fire Alarm, Vertical Transportation, Security, Plumbing and Sanitary System.
- Associated Firms** : Urban Architects & Associates Co., Ltd.



- Project Title** : **THAI LIFE INSURANCE**
- Location** : Rattana Thibet Rd.
- Owner** : Thai life Insurance
- Commissioned** : 1995
- Project Summary** : 15-Storeys Condominium Tower
- Firm's Role** : M&E System Design: Air-conditioning, Ventilating, Electrical Power, Lighting, Telecommunication, Fire Alarm and Vertical Transportation System.



PAST PROJECTS


 Offices


Project Title : **UNITED CENTER**
 Location : Silom Road, Bangkok.
 Owner : United Center Co., Ltd.
 Commissioned : 1994
 Project Summary : Site Area: 61,900 Sq.m., 50-Storeys Office Building and Shopping Center.
 Firm's Role : M&E System Design: Air-conditioning, Ventilating, Electrical Power, Lighting, Telecommunication, Fire Alarm, CCTV and Vertical Transportation System.



Project Title : **CTI TOWER**
 Location : Ratchadapisek Road, Bangkok.
 Owner : -
 Commissioned : 1993
 Project Summary : 32-Storeys Office Building.
 Firm's Role : M&E System Design: Air-conditioning, Ventilating, Electrical Power, Lighting, Telecommunication, Fire Alarm and Vertical Transportation System.



PAST PROJECTS


 Offices


Project Title : **GRAND AMARIN TOWER**
 Location : New Petchburi Road, Bangkok.
 Owner : Amarin Plaza Group.
 Commissioned : 1993
 Project Summary : Site Area: 49,000 Sq.m., 32-Storeys Office Building.
 Firm's Role : M&E System Design: Air-conditioning, Ventilating, Plumbing, Sanitary, Electrical Power, Lighting, Telecommunication, Fire Alarm, Security, CCTV, Vertical Transportation and BAS System.



Project Title : **WALL STREET TOWER**
 Location : Surawong Road, Bangkok.
 Owner : Wall Street Tower Co., Ltd.
 Commissioned : 1988
 Project Summary : Site Area: 32,000 Sq.m., 29-Storeys Office Tower.
 Firm's Role : M&E System Design: Air-conditioning, Ventilating, Electrical Power, Lighting, Telecommunication, Fire Alarm and Vertical Transportation System.



PAST PROJECTS


 Offices


Project Title : **SIRIPINYO BUILDING**
 Location : Sri Ayudthaya Road, Bangkok.
 Owner : Siripinyo Co., Ltd.
 Commissioned : 1992
 Project Summary : Site Area: 18-Storeys Office Building.
 Firm's Role : M&E System Design: Air-conditioning, Ventilating, Electrical power, Lighting, Telecommunication and Fire Alarm System.



Project Title : **SSP TOWER III**
 Location : Silom Road, Bangkok.
 Owner : Siam Sinthorn Property.
 Commissioned : 1996
 Project Summary : 28-Storeys Office Building.
 Firm's Role : M&E System Design: Air-conditioning, Ventilating, Electrical Power, Lighting, Telecommunication, Fire Alarm, Security, CCTV, Vertical Transportation, Plumbing and Sanitary System.



PAST PROJECTS


 Offices


Project Title : **SAMAGGI TOWER**
 Location : North Park Estate, Bangkok.
 Owner : Samaggi Insurance Co., Ltd.
 Commissioned : 1996
 Project Summary : 20-Storey Office Building.
 Firm's Role : M&E System Design: Air-conditioning, Ventilating,
 Electrical Power, Lighting, Telecommunication,
 Fire Alarm, Security, CCTV, Vertical Transportation,
 Plumbing and Sanitary System.



Project Title : **I.F.C.T. BUILDING**
 Location : New Petchburi Rd., Bangkok
 Owner : The Industrial Finance Corporation of Thailand
 Project Summary : Office building
 Firm's Role : M&E System Design: Air-conditioning, Ventilating
 Electrical Power, Lighting, Telecommunication,
 Fire Alarm, Security, CCTV, Vertical Transportation,
 Plumbing, Fire Fighting and Sanitary System.



PAST PROJECTS



- Project Title** : **SILOM COMPLEX**
- Location** : Silom Road, Bangkok.
- Owner** : Silom Complex Co., Ltd.
- Commissioned** : 1992
- Project Summary** : Office Building, Department Stories, and Shopping Center.
- Firm's Role** : M&E System Design: Electrical Power, Lighting, Telecommunication, Fire Alarm, Plumbing, and Sanitary System.
- Associated Firms** : CASA Co., Ltd.

Offices



- Project Title** : **UNITED NATION (UN-ESCAP)**
- Location** : Rachadamnoen-Nork Road, Bangkok.
- Owner** : United Nations.
- Commissioned** : 1973
- Project Summary** : 14-Stories Office Building and 7-Stories Service Building.
- Firm's Role** : M&E System Design: Air-conditioning, Ventilating, Electrical
Power, Lighting, Telecommunication, Fire Alarm, Security and Vertical Transportation System.
- Associated Firms** : Public Works Department



PAST PROJECTS


 Offices


- Project Title** : **MINISTRY OF FINANCE**
- Location** : Rama VI Road, Bangkok.
- Owner** : Ministry of Finance
- Commissioned** : -
- Project Summary** : est. 50,000 Sq.m.,
- Firm's Role** : M&E System Design:, Electrical Power, Lighting, Telecommunication, Fire Alarm and Security System.
- Associated Firms** : -



- Project Title** : **BANK NOTE PRINTING**
- Location** : Tah Kasem Road, Bangkok.
- Owner** : Bank of Thailand
- Commissioned** : 1978
- Project Summary** : -
- Firm's Role** : M&E System Design: Air-conditioning, Ventilating, Electrical Power, Lighting, Telecommunication, Fire Alarm and Security System.
- Associated Firms** : Duang Taveesak Chaiya and Associates.



PAST PROJECTS



- Project Title** : **LE CONCORDE COMPLEX**
- Location** : Ratchadapisek Road, Bangkok.
- Owner** : Leconcorde Hotel, Toondamrong Co., Ltd.
- Commissioned** : 1997
- Project Summary** : Site Area: 120,000 Sq.m., 400-Room Five Star Hotel, 25-Stories Office Tower.
- Firm's Role** : M&E System Design: Air-conditioning, Ventilating, Electrical Power, Lighting, Telecommunications, Fire Alarm, Security, CCTV, Vertical Transportation, Plumbing and Sanitary System.
- Associated Firms** : Thai Burin Co., Ltd.


 Offices


- Project Title** : **GEMS TOWER**
- Location** : Charoen Krung Road, Bangkok.
- Owner** : Gems Tower Co., Ltd.
- Commissioned** : 1993
- Project Summary** : 44-Stories Office Building.
- Firm's Role** : M&E System Design: Air-conditioning, Ventilating, Electrical Power, Lighting, Telecommunication, Fire Alarm, Sanitary and Plumbing System.
- Associated Firms** : UK Design Co., Ltd.



PAST PROJECTS

Offices



Project Title : **SRIJULSUP TOWER**
 Location : Rama VI Road, Bangkok.
 Owner : Juldis Development Plc.
 Commissioned : 1996
 Project Summary : 22-Storeys Office Building.
 Firm's Role : M&E System Design: Air-conditioning, Ventilating, Electrical Power, Lighting, Telecommunication, Fire Alarm and Security System.



Project Title : **BEAUTY GEMS BUILDING**
 Location : Sala-Dang Rd., Bangkok.
 Owner : Beauty Gems Enterprises.
 Commissioned : 1991
 Project Summary : Site Area: 9,000 Sq.m., Office Building.
 Firm's Role : M&E System Design: Air-conditioning, Ventilating System, Electrical Power, Lighting, Telecommunication, Fire Alarm, Security, CCTV, Vertical Transportation, Plumbing and Sanitary System.



PAST PROJECTS


 Offices


- Project Title : **VILLA OFFICES**
- Location : Muagthong Thani Complex, Bangkok.
- Project Summary : Mini Office buildings
- Firm's Role : M&E System Design: Air-conditioning, and Ventilating Electrical Power, Lighting, Telecommunication, Fire Alarm, Security, CCTV, Vertical Transportation, Plumbing, Fire Fighting and Sanitary System.



- Project Title : **THE MALAYSIAN EMBASSY**
- Location : Sathorn Rd., Bangkok.
- Owner : The Malaysian Government.
- Commissioned : 1997
- Project Summary : Site Area: 10,000 Sq.m.
- Firm's Role : M&E System Design: Air-conditioning and Ventilating System.





W. AND ASSOCIATES



PROJECT REFERENCES

RESIDENTIAL





CURRENT PROJECT

- THE LINE RATCHATHEWI, CONDOMINIUM
- THE LINE JATUJAK-MOCHIT, CONDOMINIUM
- the PRODIGY
- ANGSANA RESIDENCE
- TAWEE ONE PLACE, Renovation
- THE BASE CONDOMINIUM, Korat
- SERRANO CONDOMINIUM Rama II
- ASCENT CONDOMINIUM
- THE BASE CONDOMINIUM, Thapra
- THE PARK LAND PHETKASEM
- THE IVY AMPIO
- THE ELEMENT CONDOMINIUM
- SUMMIT WINDMILL Redevelopment
- LE MERIDIEN Hotel and Services Apartment
- WORA SUKHUMVIT
- PARK HYATT Hotel and Residences

PAST PROJECT

- VILLA ASOKE
- VERTIQ CONDOMINIUM
- KHAO-YAI RESIDENCE
- MODE SUKHUMVIT 61
- THE AXIS CONDOMINIUM
- URBANO SATHORN
- VIA BOTANI
- PARKLAND PHASE II
- VILLA RACHATEWI
- LA CASCADE
- SKY BEACH CONDOMINIUM
- SILVER BEACH CONDOMINIUM
- LUMPINI PARK VIEW
- ELEPHANT BUILDING
- CITY LAKE CONDOMINIUM
- PARK BEACH CONDOMINIUM
- METRO JOMTIEN CONDOTEL
- BANGKOK RIVER PARK CONDOMINIUM
- SATHORN PARK PLACE
- JOMTIEN COMPLEX
- SATHORN GARDEN
- ROYAL CHAROENKRUNG
- CENTRAL CITY BANGNA
(Days Inn Hotel, East Tower Condominium)
- PRESIDENT PARK
- TRIDHOS CITY MARINA
- COCONUT BEACH CONDOMINIUM
- BANN MON-CHALE
- THANA CITY



PROJECT REFERENCE

Residential



- Project Title : **THE LINE RATCHATHEWI, CONDOMINIUM**
- Location : New Petchburi Road, Bangkok Thailand
- Owner : Sansiri Plc.
- Commissioned : 2014-2016
- Project Summary : High-rise Condominium, 38+ storeys., 250 units. Construction area is estimated at 28,000 sq.m.
- Construction Cost : Estimated at 650 million baht
- Firm's Role : M&E System Design: Air-conditioning, Ventilating, Electrical Power, Lighting, Telecommunication, Fire Alarm, CCTV, Fire Fighting, Waste water treatment, Hot water, Storm Drainage, Security, Elevators.
- Civil and Structural design



CURRENT PROJECTS

Residential



Project Title	: THE LINE JATUJAK-MOCHIT, CONDOMINIUM
Location	: Jatujak, Bangkok Thailand
Owner	: Sansiri Plc.
Commissioned	: 2014-2016
Project Summary	: High-rise Condominium, 40+ storeys., 870 units. Construction area is estimated at 60,000 sq.m.
Construction Cost	: Estimated at 1,350 million baht
Firm's Role	: M&E System Design: Air-conditioning, Ventilating, Electrical Power, Lighting, Telecommunication, Fire Alarm, CCTV, Fire Fighting, Waste water treatment, Hot water, Recycle Water, Swimming Pool Storm Drainage, Security, Elevators.



PROJECT REFERENCE

Residential



- Project Title : **the PRODIGY**
- Location : Petchakasem 62,Thailand
Owner : GDT Property co.,Ltd.
Commissioned : 2014-2016
Project Summary : A high rise condominium buildings (33 floors) with Construction area estimated at 73,275 sq. m..
- Construction Cost : Estimated at 1,100 million baht
- Firm's Role : M&E System Design: Air-conditioning, Ventilating, Electrical Power, Lighting, Telecommunication, Fire Alarm, CCTV, Fire Fighting, Waste water treatment, Hot water, Swimming Pool, Storm Drainage, Security, Elevators.

Civil and Structural design



PROJECT REFERENCE

Residential


Project Title : **THE BASE CONDOMINIUM, Korat**
 Location : Korat, Thailand
 Owner : Piwattana Co., Ltd.
 Commissioned : 2013-2015
 Project Summary : Construction area est. 90,000 sq.m.
 Building A : 52,000 sq.m., 20-stories
 Building B : 40,000 sq.m., 20 -stories
 Construction Cost : 1,300 Million Baht
 Firm's Role : M&E System Design: Air-conditioning, Ventilating,
 Electrical Power, Lighting, Telecommunication, Fire Alarm,
 Access Control, CCTV, Fire Fighting, Waste water treatment,
 Recycle water, Irrigation, Security System



Project Title : **THE BASE CONDOMINIUM**
 Location : Ratchada-Thapra
 Owner : Anawat Co., Ltd.
 Commissioned : 2012-2014
 Project Summary : Construction area est. 98,000 sq.m., 40-storey high rise bldg.
 Construction Cost : 1,300 Million Baht
 Firm's Role : M&E System Design: Air-conditioning, Ventilating,
 Electrical Power, Lighting, Telecommunication, Fire Alarm,
 Access Control, CCTV, Fire Fighting, Waste water treatment,
 Recycle water, Irrigation, Security System



PROJECT REFERENCE

Residential



Project Title : **ANGSANA RESIDENCE**

Location : Phuket, Thailand
 Owner : Laguna Grande Limited.
 Commissioned : 2014-2015

Project Summary : Condominium buildings with Construction area estimated at 9,946 sq. m. The Condominium is a part of Laguna Property.
 Construction Cost : Estimated at 350 million baht
 Firm's Role : M&E System Design: Air-conditioning, Ventilating, Electrical Power, Lighting, Telecommunication, Fire Alarm, CCTV, Fighting, Waste water treatment, Hot water, Storm Drainage, BMS, Security, Elevators.

Civil and Structural design



NO IMAGE

Project Title : **TAWEE ONE PLACE RENOVATION PROJECT**

Location : Sukhumvit 33, Bangkok
 Owner : Anektawee co.,Ltd.
 Commissioned : -

Project Summary : Apartment 12 storey
 Construction Cost : 40 millions Baht (M&E only)
 Firm's Role : M&E System Design: Air-conditioning, Ventilating, Electrical Power, Lighting, Telecommunication, Fire Alarm, Access Control, CCTV, Fire Fighting, Waste water treatment, Recycle water, Irrigation, Security System



PROJECT REFERENCE

Residential



- Project Title : **SERRANO CONDOMINIUM**
- Location : Rama II, Bangkok
- Owner : -
- Commissioned : 2012-2014
- Project Summary : Phase I with 2 buildings and construction area est. 38,880 sq.m.
Phase II with 2 buildings and construction area est. 18,000 sq.m.
- Construction Cost : -
- Firm's Role : M&E System Design: Air-conditioning, Ventilating, Electrical Power, Lighting, Telecommunication, Fire Alarm, Access Control, CCTV, Fire Fighting, Waste water treatment, Recycle water, Irrigation, Pool Support, Security System, Vertical Transportation.



- Project Title : **THE PARKLAND PHETKASEM**
- Location : Phetkasem, Bangkok
- Owner : Narai Property Co., Ltd.
- Commissioned : -
- Project Summary : Construction area est. 58,164 sq.m
- Construction Cost : 2012-2015
- Firm's Role : M&E System Design: Air-conditioning, Ventilating, Electrical Power, Lighting, Telecommunication, Fire Alarm, Access Control, CCTV, Fire Fighting, Waste water treatment, Recycle water, Irrigation, Pool Support, Security System, Vertical Transportation.



PROJECT REFERENCE

Residential



Project Title : **THE IVY AMPIO**

Location : Ratchada Rd., Bangkok

Owner : Prukasa Real Estate Pcl.

Commissioned : 2010

Project Summary : Condominium 29-storey

Construction Cost : -

Firm's Role : M&E System Design: Air-conditioning, Ventilating, Electrical Power, Lighting, Telecommunication, Fire Alarm, Access Control, CCTV, Fire Fighting, Waste water treatment, Recycle water, Irrigation, Pool Support, Security System, Vertical Transportation.



Project Title : **URBANO SATHORN**

Location : Sathorn Rd., Bangkok

Owner : Prukasa Real Estate Pcl.

Commissioned : 2010

Project Summary : Condominium 40-storey high, 50,000 sq.m.

Construction Cost : -

Firm's Role : M&E System Design: Air-conditioning, Ventilating, Electrical Power, Lighting, Telecommunication, Fire Alarm, Access Control, CCTV, Fire Fighting, Waste water treatment, Recycle water, Irrigation, Pool Support, Security System, Vertical Transportation.



PROJECT REFERENCE

Residential



Project Title : **VILLA ASOKE**

Location : New Petchburi Rd., Bangkok

Owner : TCC Capital Land

Commissioned : 2008-2013

Project Summary : 40-storey high rise condominium with 45,000 sq.m.

Construction Cost : 1,100 millions Baht

Firm's Role : M&E System Design: Air-conditioning, Ventilating, Plumbing, Sanitary, Electrical Power, Lighting, Telecommunication, Fire Fighting, Vertical Transportation, Wastewater Treatment CCTV, Fire Alarm and Fire Protections System.



Project Title : **VERTIQ CONDOMINIUM**

Location : Samyan, Bangkok

Owner : Siamnuwat Co., Ltd.

Commissioned : 2009-2013

Project Summary : Condominium 23-storey

Construction Cost : 600 millions Bhat

Firm's Role : M&E System Design: Air-conditioning, Ventilating, Electrical Power, Lighting, Telecommunication, Fire Alarm, Access Control, CCTV, Fire Fighting, Waste water treatment, Recycle water, Irrigation, Pool Support, Security System, Vertical Transportation.



PROJECT REFERENCE

Residential



Project Title : **INTRO BY RASA CONDOMINIUM**

Location : Pradiphat Rd., Bangkok

Owner : Rasa Property Development Public Co., Ltd.

Commissioned : 2007

Project Summary : a 35-storeys of Condominium and 5-storeys of car park building.

Construction Cost : est. 30 millions USD

Firm's Role : M&E System Design: Air-conditioning, Ventilating, Electrical Power, Lighting, Telecommunication, Fire Alarm, CCTV, Access Control, Fire Fighting, Waste water treatment, Storm Drainage, Pool Support, Security System and Vertical Transportation.



Project Title : **CHENGWATTANA CONDOMINIUM**

Location : Chengwattana Rd., Bangkok

Owner : -

Commissioned : -

Project Summary : Condominium 45-storey,
Land area 3-0-28 rais

Construction Cost : -

Firm's Role : M&E System Design: Air-conditioning, Ventilating, Electrical Power, Lighting, Telecommunication, Fire Alarm, Access Control, CCTV, Fire Fighting, Waste water treatment, Recycle water, Irrigation, Pool Support, Security System, Vertical Transportation.



PROJECT REFERENCE

Residential



Project Title : **THE AXIS CONDOMINIUM**

Location : Pattaya, Chonburi

Owner : -

Commissioned : 2009-2013

Project Summary : 50,000 sq.m. Condominium

Construction Cost : est. 900 million baht

Firm's Role : M&E System Design: Air-conditioning, Ventilating, Electrical Power, Lighting, Telecommunication, Fire Alarm, Access Control, CCTV, Fire Fighting, Waste water treatment, Irrigation, Pool Support, Security System, Vertical Transportation.



Project Title : **WORA SUKHUMVIT**

Location : Sukhumvit 49, Bangkok

Owner : W Property

Commissioned : 2010

Project Summary : Condominium 8- storey

Construction Cost : -

Firm's Role : M&E System Design: Air-conditioning, Ventilating, Electrical Power, Lighting, Telecommunication, Fire Alarm, Access Control, CCTV, Fire Fighting, Waste water treatment, Recycle water, Irrigation, Security System



PROJECT REFERENCE

Residential



Project Title : **SAMARNCHANT CONDOMINIUM**

Location : Sukhumvit Rd., Bangkok

Owner : Daika Estate Co., Ltd.

Commissioned : -

Project Summary : 8-storey Condominium with 2 Basement

Construction Cost : 150 Million Baht

Firm's Role : M&E System Design: Air-conditioning, Ventilating, Electrical Power, Lighting, Telecommunication, Fire Alarm, Access Control, CCTV, Fire Fighting, Waste water treatment, Recycle water, Irrigation, Pool Support, Security System, Vertical Transportation.



Project Title : **ASCENT CONDOMINIUM**

Location : Eakamai Rd., Bangkok

Owner : -

Commissioned : 2012

Project Summary : Construction area est. 6,300 sq.m. with 8-storey building

Construction Cost : est. 630 million baht

Firm's Role : M&E System Design: Air-conditioning, Ventilating, Electrical Power, Lighting, Telecommunication, Fire Alarm, Access Control, CCTV, Fire Fighting, Waste water treatment, Recycle water, Irrigation, Pool Support, Security System, Vertical Transportation.



PROJECT REFERENCE

Residential



Project Title : **MODE SUKHUMVIT 61**

Location : Sukhumvit Rd., Bangkok

Owner : Gaysorn Property Co., Ltd.

Commissioned : 2010

Project Summary : 2 Condominium with 8-storey high

Construction Cost : -

Firm's Role : M&E System Design: Air-conditioning, Ventilating, Electrical Power, Lighting, Telecommunication, Fire Alarm, Access Control, CCTV, Fire Fighting, Waste water treatment, Recycle water, Irrigation, Pool Support, Security System, Vertical Transportation.



Project Title : **VIA BOTANI**

Location : Sukhumvit 47, Bangkok

Owner : SANSIRI Public Co., Ltd.

Commissioned : 2011-2013

Project Summary : Condominium 8-storey high, CFA 10-12,000 sq.m.

Construction Cost : 450 million Baht

Firm's Role : M&E System Design: Air-conditioning, Ventilating, Electrical Power, Lighting, Telecommunication, Fire Alarm, Access Control, CCTV, Fire Fighting, Waste water treatment, Recycle water, Irrigation, Pool Support, Security System, Vertical Transportation.



PROJECT REFERENCE

Residential



- Project Title : **VILLA RACHATEWI**
- Location : Phayathai Road, Bangkok
- Owner : TCC Capital Land
- Commissioned : 2008
- Project Summary : 80,000 sq.m. - Condo 603 rooms, Services Apartment 225 rooms
- Construction Cost : est. 54 millions USD
- Firm's Role : M&E System Design: Air-conditioning, Ventilating, Plumbing, Sanitary, Electrical Power, Lighting, Telecommunication, CCTV, Fire Alarm and Fire Protections System.

VILLA
RACHATEWI



- Project Title : **ROYAL CHAROENKRUNG**
- Location : Silom Road, Bangkok.
- Owner : Royal Charoenkrung Co., Ltd.
- Commissioned : To be completed 1996
- Project Summary : Site Area: 235,000 Sq.m., 63-Stories Building.
- Firm's Role : M&E System Design: Air-conditioning, Ventilating, Electrical Power, Lighting, Telecommunication, Fire Alarm and Vertical Transportation System.



PROJECT REFERENCE

Residential



Project Title	:	THE FAH
Location	:	Soi Aree, Bangkok
Owner	:	Supreme Estate Development Co., Ltd.
Commissioned	:	
Project Summary	:	Condominium
Construction Cost	:	
Firm's Role	:	M&E System Design: Air-conditioning, Ventilating, Electrical Power, Lighting, Telecommunication, Fire Alarm, Building Management, CCTV, Gas piping, Hot water generation, Fire Fighting, Waste water treatment, Recycle water, Irrigation Pool Support and Security System.



Project Title	:	ELEPHANT BUILDING
Location	:	Phaholyothin Road, Bangkok.
Owner	:	Thammathani Co., Ltd.
Commissioned	:	1996
Project Summary	:	Site Area: 130,000 Sq.m., Two 31-Stories Office Tower, 31-Stories Condominium.
Firm's Role	:	M&E System Design: Air-conditioning, Ventilating, Electrical Power, Lighting, Telecommunication, Fire Alarm, Security, CCTV, Vertical Transportation, Plumbing and Sanitary System.



PROJECT REFERENCE

Residential



Project Title : **SKY BEACH CONDOMINIUM**
Location : Pattaya, Chonburi.
Owner : -
Commissioned : 1994
Project Summary : 44 -Storey Condominium Tower
Firm's Role : M&E System Design: Electrical Power,
Lighting, Telecommunication, Fire Alarm,
and Vertical Transportation System.



Project Title : **SILVER BEACH CONDOMINIUM**
Location : Pattaya, Chonburi.
Owner : -
Commissioned : 1992
Project Summary : 25-Storey Condominium Tower.
Firm's Role : M&E System Design: Electrical Power,
Lighting, Telecommunication, Fire Alarm,
and Vertical Transportation System.



PROJECT REFERENCE

Residential



Project Title : **LUMPINI PARK VIEW**

Location : Rama IV Road, Bangkok.

Owner : Thospol Land Co.,Ltd.

Commissioned : 1997

Project Summary : 32-Storey Condominium.

Firm's Role : M&E System Design: Air-conditioning, Ventilating, Electrical Power, Lighting, Telecommunication, Fire Alarm, Security, CCTV, Vertical Transportation, Plumbing and Sanitary System.



Project Title : **CITY LAKE CONDOMINIUM**

Location : Ratchadaphisek Road, Bangkok.

Owner : -

Commissioned : 1993

Project Summary : 25-Stories Condominium Building

Firm's Role : M&E System Design: Air-conditioning, Ventilating, Electrical Power, Lighting, Telecommunication, Fire Alarm, Security, CCTV, Vertical Transportation, Plumbing, Fire Fighting and Sanitary System



Project Title : **LA CASCADE**

Location : Ekamai Road, Bangkok.

Owner : La Cascade Co.,Ltd.

Commissioned : 1993

Project Summary : 20-Storey Condominium.

Firm's Role : M&E System Design: Electrical Power, Lighting, Telecommunication, Fire Alarm, and Vertical Transportation System.



PROJECT REFERENCE

Residential



Project Title : **PARK BEACH CONDOMINIUM**

Location : Pattaya, Chonburi.

Owner : -

Commissioned : 1993

Project Summary : 40-Storey Condominium Tower

Firm's Role : M&E System Design: Electrical Power, Lighting, Telecommunication, Fire Alarm, and Vertical Transportation System.



Project Title : **METRO JOMTIEN CONDOTEL**

Location : Pattaya, Chonburi.

Owner : Metro Machinery.


Commissioned : 1993

Project Summary : 44-Storey Condominium Tower and Low Rise Condominium.

Firm's Role : M&E System Design: Air-conditioning, Ventilating, Electrical Power, Lighting, Telecommunication, Fire Alarm, Vertical Transportation, Plumbing, and Sanitary System.



PROJECT REFERENCE




Project Title : **BANGKOK RIVER PARKS**
 Location : Chao-Praya River
 Owner : -
 Commissioned : 1992
 Project Summary : 34-Stories Condominium Tower
 Firm's Role : M&E System Design: Electrical Power, Lighting, Telecommunication, Fire Alarm and Vertical Transportation System.



Project Title : **SATHORN PARK PLACE**
 Location : South Sathorn, Bangkok.
 Owner : Central Group
 Commissioned : 1994
 Project Summary : -
 Firm's Role : M&E System Design: Air-conditioning, Ventilating, Electrical Power, Lighting, Telecommunication, Fire Alarm, Fire Protection, Plumbing, Wastewater Treatment and Vertical Transportation System.



PROJECT REFERENCE

Residential



Project Title : **JOMTIEN COMPLEX**

Location : Pattaya, Chonburi.

Owner : -

Commissioned : 1993

Project Summary : Two 30-Stories Condominium Tower and Shopping Arcade.

Firm's Role : M&E System Design: Electrical Power, Lighting, Telecommunication, Fire Alarm and Vertical Transportation System.



Project Title : **SATHORN GARDEN**

Location : Sathorn Road, Bangkok.

Owner : Malaysian Embassy.

Commissioned : 1997

Project Summary : Site Area: 136,000 Sq.m., Two-Tower, 42-Stories Condominium, and Malaysian Embassy.

Firm's Role : M&E System Design: Air-conditioning and Ventilating System.



PROJECT REFERENCE

Residential


Project Title : **PRESIDENT PARK**
Location : Sukhumvit 24, Bangkok.
Owner : The Royal Sukhumvit Garden Co.,Ltd.
Commissioned : 1993
Project Summary : Five Residential Towers, Fitness Club, and Restaurants.
Firm's Role : M&E System Design: Air-conditioning, Ventilating, Electrical Power, Lighting, Telecommunication, Fire Alarm, and Security System.



Project Title : **TRIDHOS CITY MARINA**
Location : Charoen Nakorn Road, Bangkok.
Owner : Tridhos Co.,Ltd.
Commissioned : 1992
Project Summary : Tower1 : 31 Floors
 Tower2 : 26 Floors
 Tower3 : 21 Floors
Firm's Role : M&E System Design: Air-conditioning, Ventilating, Electrical Power, Lighting, Telecommunication, and Fire Alarm System.



PROJECT REFERENCE

Residential



Project Title : **COCONUT BEACH CONDOMINIUM**

Location : Pattaya, Cholburi.

Owner : -

Commissioned : 1992

Project Summary : Site Area:10,000 Sq.m., 18-Stories Condominium Building.

Firm's Role : M&E System Design: Air-Conditioning, Ventilating, Electrical Power, Lighting, Telecommunication, Fire Alarm, Plumbing and Sanitary System.



Project Title : **BANN MON-CHALE**

Location : Petchaburi

Owner : Central Group

Commissioned : 1997

Firm's Role : M&E System Design: Air-Conditioning, Ventilating, Electrical Power, Lighting, Telecommunication, Fire Alarm, Fire Fighting, Waste water treatment, Plumbing and Sanitary System.



PROJECT REFERENCE

Residential


Project Title : **PARKLAND PHASE II**
 Location : Srinakarin Rd., Bangkok
 Owner : Naraya Co., Ltd.
 Commissioned :
 Project Summary : Condominium 3 Buildings; composed
 • 19-storeys high rise, 2 buildings
 • 11-storeys high rise, 1 building
 Construction Cost :
 Firm's Role : M&E System Design: Air-conditioning, Ventilating, Electrical Power, Lighting, Telecommunication, Fire Alarm, Access Control, CCTV, Fire Fighting, Waste water treatment, Recycle water, Irrigation, Pool Support, Security System, Vertical Transportation.



Project Title : **CENTRAL CITY
Days Inn Hotel, East Tower Condominium**
 Location : Bangna Trad Highway
 Owner : Central Pattana
 Commissioned : 1994
 Firm's Role : M&E System Design: Air-Conditioning, Ventilating, Electrical Power, Lighting, Telecommunication, Fire Alarm, Plumbing and Sanitary System.



Project Title : **THANA CITY**
 Location : Bangna-Trad Road, Smuthprakarn.
 Owner : Thana City Co.,Ltd.
 Commissioned : 1993
 Project Summary : Six Tower Residential Condominiums.
 Firm's Role : M&E System Design: Electrical Power, Lighting, Telecommunication, Fire Alarm, CCTV, Vertical Transportation, Plumbing, and Sanitary System.





W. AND ASSOCIATES



PROJECT REFERENCES

RETIALS





CURRENT PROJECT

- THE STREET
- CENTRAL PLASA KOKO
- EMPIRE TOWER (The renovation)
- JEDDAH HOUSING COMPLEXE
- METRO WEST COMMUNITY CENTER
- METRO EAST COMMUNITY CENTER
- UBON SQUARE
- MYAWADDY TOWN SQUARE

PAST PROJECT

- CENTRAL PLAZA SALAYA
- CENTRAL PLAZA RAYONG
- EKAMAI GATEWAY
- PLEARNARY MALL
- CENTRAL PLAZA SURATTHANI
- ASIATIQUE The River Waterfront
- Big C SUPER CENTER
 - Thepkasastree, Phuket Branch
 - Lomsak Branch
 - Thanyaburi Branch
 - Mahachai Branch
 - Tharuea, Kanjanaburi Branch
 - Satun Branch
 - Roiet Branch
 - Aungthong Branch
 - Kalasin Branch
 - Samutrsongkram Branch
- PORTO CHINO
- RAIN HILL
- CENTRAL PLAZA CHIANG-RAI
- CENTRAL PLAZA PINKLAO (The Renovation)
- ERAWAN Bangkok
- AMARIN PLAZA
- PLOENCHIT CENTER
- LAKSI PLAZA
- BANGRAK PLAZA
- SILOM COMPLEX
- NIKORN THANI
- CATHAY DEPARTMENT STROE, Bang Kae
- CENTRAL TOWN (Rattathibet renovation)
- CENTRAL TOWN CENTER (Rattathibet Phase II)
- RATCHADAMRI ARCADE
- PLOENCHIT ARCADE
- CENTRAL DEPARTMENT STROE, Hua-Mark
- ROBINSON DEPARTMENT STROE, Donmuang



PROJECT REFERENCE






 Retails


- Project Title : **CENTRAL PLAZA NAKORN RACHASIMA (KORAT)**
- Location : Nakorn Rachasima, Thailand
- Owner : Central Pattana Plc.
- Commissioned : 2014-2015
- Project Summary : Construction area est. 233,800 sq.m., Shopping Complexes comprise of Retail Spaces, Anchors, Cinemas, F&B and etc.
- Construction Cost : est. 6,000 million baht
- Firm's Role : M&E System Design: Air-conditioning, Ventilating
Electrical Power, Lighting, Telecommunication
Fire Alarm, Public Address and Background Music
Master Antenna Television, CCTV, Fire Fighting
Waste Water Treatment, Recycle Water Irrigation
Security System, Vertical Transportation and Escalators

Civil and Structural design








PROJECT REFERENCE





 Retails


Project Title	:	CENTRAL PLAZA RAYONG
Location	:	Rayong, Thailand
Owner	:	Central Pattana Plc.
Commissioned	:	2013-2015
Project Summary	:	Construction area est. 136,550 sq.m., Shopping Complexes
Construction Cost	:	est. 4,000 million baht
Firm's Role	:	M&E System Design: Air-conditioning, Ventilating Electrical Power, Lighting, Telecommunication Fire Alarm, Public Address and Background Music Master Antenna Television, CCTV, Fire Fighting Waste Water Treatment, Recycle Water Irrigation Security System, Vertical Transportation.




PROJECT REFERENCE

Retails



Project Title : **CENTRAL PLAZA SALAYA**

Location : Nakhonpathom

Owner : Central Pattana Plc.

Commissioned : 2012-2014

Project Summary : Construction area est. 89,500 sq.m., Shopping Complexes

Construction Cost : 2,700 millions Baht

Firm's Role : M&E System Design: Air-conditioning, Ventilating
 Electrical Power, Lighting, Telecommunication
 Fire Alarm, Public Address and Background Music
 Master Antenna Television, CCTV, Fire Fighting
 Waste Water Treatment, Recycle Water Irrigation
 Security System, Escalotor, Vertical Transportation.



PROJECT REFERENCE



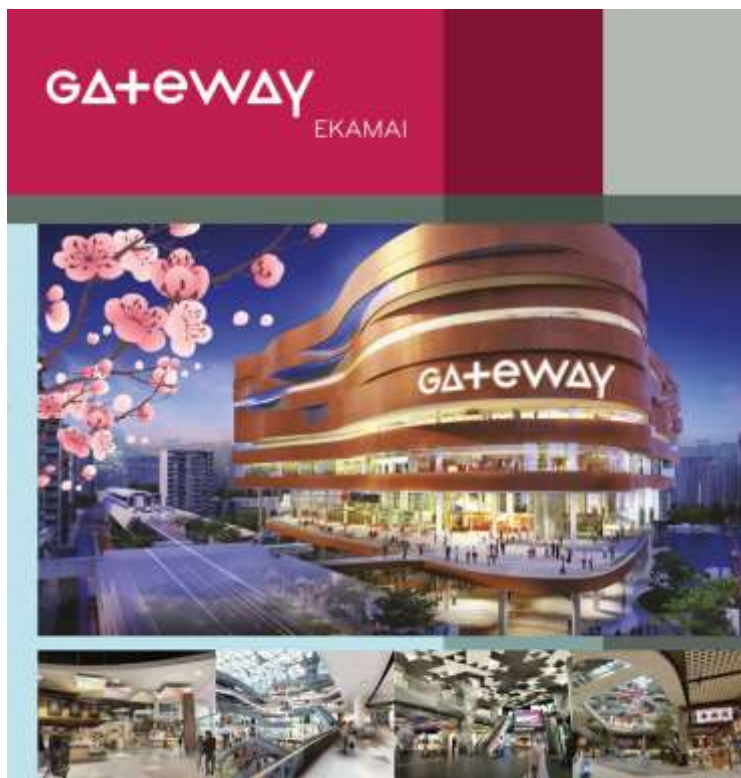


 Retails


- Project Title : **THE STREET**
- Location : Rachada Phisek Road Thailand
- Owner : Variety 5 Co., Ltd.
- Commissioned : 2014-2015
- Project Summary : Construction area est. at 60,000sq.m.,
the site will be developed into a new shopping destination targeting new generation of customer around the area.
- Construction Cost : est. 600 million baht
- Firm's Role : M&E System Design: Air-conditioning, Ventilating
Electrical Power, Lighting, Telecommunication
Fire Alarm, Public Address and Background Music
Master Antenna Television, CCTV, Fire Fighting
Waste Water Treatment, Security System, Vertical
Transportation and Escalators.



PROJECT REFERENCE


 Retails


- Project Title : **EKAMAI GATEWAY, the renovation**
- Location : Ekamai, Thailand
- Owner : TCC Group
- Commissioned : 2014
- Project Summary : Renovation of level 4 and 5 to suit changing shopping environment.
- Construction Cost : est. 200 million baht
- Firm's Role : M&E System Design: Air-conditioning, Ventilating
Electrical Power, Lighting, Telecommunication
Fire Alarm, Public Address and Background Music
Master Antenna Television, CCTV, Fire Fighting
Waste Water Treatment,
Security System, Vertical Transportation.



PROJECT REFERENCE



 Retail


Project Title	: EMPIRE TOWER (The renovation)
Location	: Sathorn Road, Bangkok
Owner	: TCC Group
Commissioned	: 2012-2014
Project Summary	: the renovation of front tower to be a Shopping Mall (36,000 sq.m.)
Construction Cost	: 1,000 millions Baht
Firm's Role	: M&E System Design: Air-conditioning, Ventilating, Electrical Power Lighting, Telecommunication, Fire Alarm, CCTV, Access Control Fire Fighting, Waste water treatment, Storm Drainage, BAS Security System and Vertical Transportation, LPG system.



PROJECT REFERENCE

Retails


Project Title	: METRO EAST TOWN
Location	: Sukhumvit, Bangkok
Owner	: Property Perfect Plc.
Commissioned	: 2012
Project Summary	: Construction area est. 23,000 Sq.m.
Construction Cost	: 400 Million Baht
Firm's Role	: M&E System Design: Air-conditioning, Ventilating Electrical Power., Lighting, Telecommunication Fire Alarm, Access Control, CCTV, Fire Fighting Waste Water Treatment, Recycle water, Irrigation, Security System, Vertical Transportation.

PROPERTY PERFECT


PROJECT REFERENCE



Project Title	: CENTRAL PLAZA SURATTHANI
Location	: Suratthani
Owner	: Central Pattana Plc.
Commissioned	: Construction Completed
Project Summary	: 119,000 sq.m. shopping complexes
Construction Cost	: -
Firm's Role	: M&E System Design: Air-conditioning, Ventilating, Electrical Power, Lighting, Telecommunication, Fire Alarm, CCTV, Access Control, Fire Fighting, Waste Water Treatment, Storm Drainage, Security System and Vertical Transportation.

central plaza

Retails



PROJECT REFERENCE

Retails



Project Title : **CENTRAL PLAZA CHIANG-RAI**

Location : Chiang Rai

Owner : Central Pattana Co., Ltd.

Commissioned : 2008

Project Summary : 90,000 sq.m. shopping complexes

Construction Cost : -

Firm's Role : M&E System Design: Air-conditioning, Ventilating, Electrical Power, Lighting, Telecommunication, Fire Alarm, CCTV, Access Control, Fire Fighting, Waste Water Treatment, Storm Drainage, Security System and Vertical Transportation.



PROJECT REFERENCE





 Retails


Project Title	: PLEARNARY MALL
Location	: Bangkok, Thailand
Owner	: Prinsiri Group
Commissioned	: under design
Project Summary	: 24,000 sq.m.
Construction Cost	: 410 Million Baht
Firm's Role	: M&E System Design: Air-conditioning, Ventilating Electrical Power, Lighting, Telecommunication Fire Alarm, Access Control, CCTV, Fire Fighting Waste Water Treatment, Recycle water, Irrigation Security System, Vertical Transportation

Civil and Structural design



PROJECT REFERENCE

Retails


- Project Title : **ASIASIQUE the river waterfront**
- Location : Charoen Krung Rd., Bangkok
- Owner : TCC Group
- Commissioned : -
- Project Summary : shopping arcade area est. 90,000 sq.m. for Retail shop, Restaurant Pub, Theater, Event Hall, Fresh Market, Amusement Park, Food and Beer, Outdoor event, Parking
- Construction Cost : -
- Firm's Role : M&E System Design: Air-conditioning, Ventilating, Electrical Power, Lighting, Telecommunication, Fire Alarm, Access Control, CCTV, Fire Fighting, Waste Water Treatment, Recycle water, Irrigation, Security System, Vertical Transportation.



- Project Title : **PORTO CHINO**
- Location : Rama II Rd., Bangkok
- Owner : -
- Commissioned : 2012
- Project Summary : Community Mall, Land Area 25,297 sq.m. GBA 17,494 sq.m.
- Construction Cost : -
- Firm's Role : M&E System Design: Ventilating, Electrical Power, Lighting, Telecommunication, Fire Alarm, Access Control, CCTV, Fire Fighting, Waste Water Treatment, Irrigation, Security System, Vertical Transportation.



PROJECT REFERENCE

Retails



Project Title : **BIG C SUPER CENTER**

- Roiet Branch
- Aungthong Branch
- Kalasin Branch
- Samutrsongkram Branch
- Thepkasastree, Phuket Branch
- Lomsak Branch
- Thanyaburi Branch
- Mahachai Branch
- Tharuea, Kanjanaburi Branch
- Satun Branch

Owner : Big-C Supercenter Public Co., Ltd.
 Project Summary : Superstore with retail outlets, Cinemas and etc.
 Firm's Role : M&E System Design: Air-conditioning, Ventilating, Electrical Power, Lighting, Telecommunication, Fire Alarm, CCTV, Access Control, Fire Fighting, Waste Water Treatment, Storm Drainage, Security System and Vertical Transportation.



PROJECT REFERENCE

Retails



Project Title : **METRO WEST TOWN**

Location : Kalaprapuek, Bangkok

Owner : Property Perfect Public Company Limited

Commissioned : 2013

Project Summary : 22,000 Sq.m.

Construction Cost : 500 Million Baht

Firm's Role : M&E System Design: Air-conditioning, Ventilating, Electrical Power, Lighting, Telecommunication, Fire Alarm, Access Control, CCTV, Fire Fighting, Waste Water Treatment, Recycle water, Irrigation, Security System, Vertical Transportation.



PROJECT REFERENCE



Retails


- Project Title : **MYAWADDY TOWN SQUARE**
- Location : Myanmar
- Owner : Htoo Trading Co., Ltd.
- Commissioned :
- Project Summary : area est. 30,000 sq.m.
of Shopping Mall, Cinema and etc.
- Construction Cost : -
- Firm's Role : M&E System Design: Air-conditioning, Ventilating, Electrical Power, Lighting, Telecommunication, Fire Alarm, Building Management, CCTV, Gas piping, Hot water generation, Fire Fighting, Waste Water Treatment, Recycle water, Irrigation Pool Support and Security System.



- Project Title : **UBON SQUARE**
- Location : Ubonratchathani, Thailand
- Owner : บริษัท เจริญพัฒนาเขต จำกัด (โครงการนิกรธานี)
- Commissioned : 2012
- Project Summary : 18,551 sq.m. Open Mall
- Construction Cost :
- Firm's Role : M&E System Design: Air-conditioning, Ventilating, Electrical Power, Lighting, Telecommunication, Fire Alarm, Plumbing & Fire Protection system, Waste Water Treatment and Drainage System .



PROJECT REFERENCE

Retails



Project Title	: JEDDAH HOUSING COMPLEX
Location	: Jeddah, Saudi Arabia
Owner	: RIC (Rayadah Investment Company)
Commissioned	: 2013 - 2015
Project Summary	: Construction area est. 29,800 sq.m. Shopping Complexes
Construction Cost	: 810 Million Baht
Firm's Role	: M&E System Design: Air-conditioning, Ventilating, Electrical Power, Lighting, Telecommunication, Fire Alarm, Public Address and Background Music (sound), Master Antenna Television, CCTV, Fire Fighting, Waste water treatment, Recycle water, Irrigation, Pool Support, Security System, Vertical Transportation.



PROJECT REFERENCE

Retails


Project Title : **THE VUE**

Location : Charoen Nakorn Rd., Bangkok

Owner : Raimon Land Public Co., Ltd.

Commissioned : 2010

Project Summary : Community Mall GBA 7,000 sq.m.

Construction Cost : -

Firm's Role : M&E System Design: Ventilating, Electrical Power, Lighting, Telecommunication, Fire Alarm, Access Control, CCTV, Fire Fighting, Waste Water Treatment, Irrigation, Security System, Vertical Transportation.



Project Title : **THE RAIN HILL**

Location : Sukhumvit 47, Bangkok

Owner : BOUTIQUE Asset Management Ltd.

Commissioned : -

Project Summary : Mix-used comprises of Service Apartment & Restaurant, Swimming Pool and Fitness GBA 10,000 sq.m.

Construction Cost : -

Firm's Role : M&E System Design: Air-conditioning, Ventilating, Electrical Power, Lighting, Telecommunication, Fire Alarm, Access Control, CCTV, Fire Fighting, Waste Water Treatment, Irrigation, Security System, Vertical Transportation.



PROJECT REFERENCE



centralplaza

Retails

- Project Title : **CENTRAL PLAZA PINKLAO**
(The Renovation)
- Location : Bangkok
- Owner : Central Pattana Co., Ltd.
- Commissioned : 2008
- Project Summary : 53,000 sq.m. shopping complexes
- Construction Cost : -
- Firm's Role : M&E System Design: Air-conditioning, Ventilating, Electrical Power, Lighting, Telecommunication, Fire Alarm, CCTV, Access Control, Fire Fighting, Waste Water Treatment, Storm Drainage, Security System and Vertical Transportation.



centralplaza

- Project Title : **CENTRAL TOWN CENTER**
(Rattana Thibet Phase II)
- Location : Rattana Thibet Road, Nonthaburi
- Owner : Central Pattana Plc. (CPN)
- Commissioned : 2006
- Project Summary : a 50,000 sq.m. of Retailed spaces and Car park area.
- Firm's Role : M&E System Design: Air-conditioning, Ventilating, Electrical Power, Lighting, Telecommunication, Fire Alarm, Building Management, CCTV, Fire Fighting, Waste Water Treatment, Security System and Vertical Transportation.



PROJECT REFERENCE

Retails



- Project Title : **ERAWAN BANGKOK**
(The Renovation)
- Location : Ratchaprasong Square
Owner : ERAWAN Groups
Commissioned : 2005
Project Summary : Renovation of the residence meeting area
and pool deck with urban resort style villas
Firm's Role : Mechanical and Electrical engineering



PROJECT REFERENCE





 Retails


Project Title : **PLOENCHIT CENTER**

Location : Ploenchit Road, Bangkok.

Owner : Amarin Plaza Group.

Commissioned : 1997

Project Summary : Site Area:140,000 Sq.m., Five
Star Hotel, Shopping Arcade, and Office Building.

Firm's Role : M&E System Design: Air-conditioning, and Ventilating System.



Project Title : **LAKSI PLAZA**

Location : Viphavadi Road, Bangkok.

Owner : Laksi Plaza Co., Ltd.

Commissioned : 1991

Project Summary : Office Building, Department Store and Shopping Center.

Firm's Role : M&E System Design: Air-conditioning, Ventilating,
Electrical Power, Lighting and Vertical Transportation System.



PROJECT REFERENCE





 Retails


Project Title : **AMARIN TOWER**

Location : Ploenchit Road, Bangkok.

Owner : Amarin Plaza Group.

Commissioned : 1987

Project Summary : 20-Storeys Office Tower and Shopping Arcade.

Firm's Role : M&E System Design: Air-conditioning, Ventilating, Electrical Power, Lighting, Telecommunication, Fire Alarm and Vertical Transportation System.



Project Title : **BANGRAK PLAZA**

Location : Charoen-Krung Road, Bangkok.

Owner : Rajapark Enterprise Co., Ltd. Centre Point Apartments.

Commissioned : 1991-1994

Project Summary : Site Area:80,130 Sq.m.28-Storey Service Apartment, Department Store and Market.

Firm's Role : M&E System Design: Air-conditioning and Ventilation System.



PROJECT REFERENCE





 Retails


Project Title : **SILOM COMPLEX**
 Location : Silom Road, Bangkok
 Owner : Silom Complex Co., Ltd.
 Commissioned : 1992
 Project Summary : Office Building, Department Store, and Shopping Center.
 Firm's Role : M&E System Design: Electrical Power, Lighting, Telecommunication and Fire Alarm.



Project Title : **LE CONCORDE COMPLEX**
 Location : Ratchadapisek Road, Bangkok.
 Owner : Leconcorde Hotel, Toondamrong Co., Ltd.
 Commissioned : 1997
 Project Summary : Site Area: 120,000 sq.m., 400Rooms Five Star Hotel, 25-Storey Office Tower.
 Firm's Role : M&E System Design: Air-conditioning, Ventilating, Electrical Power, Lighting, Telecommunications, Fire Alarm, Security, CCTV, Vertical Transportation, Plumbing, and Sanitary System.



PROJECT REFERENCE

Retails



Project Title : **SORAYA SHOPPING**

Location : Phnom Penh, Cambodia

Owner : Canadia Bank

Commissioned : 2002 (completed)

Firm's Role : M&E System Design: Ventilating, Electrical Power, Lighting, Telecommunication, Fire Alarm, Fire Fighting Plumbing, and Sanitary System.



Project Title : **GOLDEN CITY SHOPPING CENTER**

Location : Phnom Penh, Cambodia

Owner : Canadia Bank Ltd. Phnom Penh, Cambodia

Commissioned : -

Project Summary : Shopping Center

Firm's Role : M&E System Design, Electrical Power, Lighting, Telecommunication, Fire Alarm, Plumbing, Fire Protection and Sanitary System..





W. AND ASSOCIATES



PROJECT REFERENCE

Health Care





CURRENT PROJECT

- DARARASSAMEE HOSPITAL
- TRANG RUAMPAT HOSPITAL
- HARIPHUNCHAI HOSPITAL
- BANGKHUN-TIEN HOSPITAL

PAST PROJECT

- PATANA MEDICAL CENTER
(The Renovation)
- SONGKLANAKARIN HOSPITAL
- SRINAKARIN HOSPITAL
- KHON KAEN HOSPITAL
- BUAYAI HOSPITAL
- THAI RED CROSS SOCIETY (Blood Center)
- RATNIN EYE HOSPITAL
- KALASIN HOSPITAL



PROJECT REFERENCE

Health Care

Project Title : **DARARASSAMEE HOSPITAL**

Location : Chiang -Mai

Owner : Dararassamee Hospital

Commissioned : -

Project Summary : 7-storey and Construction area est. 1,100 sq.m.

Construction Cost : -

Firm's Role : M&E System Design: Air-conditioning, Ventilating, Electrical Power, Telecommunication, Fire Alarm, Drinking water system, CCTV, Fire Fighting and Public Address system.



PROJECT REFERENCE

Health Cares

Project Title	:	TRANG RUAMPAT HOSPITAL
Location	:	Trang , Thailand
Owner	:	Trang Ruampat Hospital
Commissioned	:	2013- 2016
Project Summary	:	Construction area est 13,000 sq.m
Firm's Role	:	M&E System Design : Air conditioning, Ventilation, Electrical, Emergency power, Lightings, Grounding and Lightning protection Fire Alarm, Fire protection and Fire fighting, Plumbing and Sanitary Site Drainage, Hot water supply, Cold water supply, Gas piping for kitchen, Public address and Back ground music, Telecommunication (PABX), Master Antenna (MATV), Security and digital surveillance (CCTV), Building Management, Waste water treatment, Irrigation system and Vertical Transportation system (lifts), Medical Gas



PROJECT REFERENCE

Health Cares

- Project Title : **HARIPHUNCHAI HOSPITAL**
- Location : Lamphun, Thailand
- Owner : Hariphunchai Hospital
- Commissioned : -
- Project Summary : Construction area est 12,500 sq.m.
- Construction Cost : -
- Firm's Role : M&E System Design: Air-conditioning, Ventilating, Electrical Power, Telecommunication, Fire Alarm, Drinking water system, CCTV, Fire Fighting and Public Address system.

PROJECT REFERENCE

Health Cares



- Project Title : **BANGKHUN-TIEN HOSPITAL**
- Location : Bangkhuntien Bangkok
- Owner : Department of Medical, Bangkok
(สำนักงานแพทย์ ทม.)
- Commissioned : 2011
- Project Summary : Site Area : Multi -Purpose Area 4,500 sq.m.,
Car Parking space in the building
at least 200 cars
- Firm's Role : M&E System Design : Air conditioning, Ventilation,
Electrical, Emergency power, Lightings, Grounding and
Lightning protection, Fire Alarm, Fire protection and
Fire fighting, Plumbing and Sanitary, Site Drainage,
Hot water supply, Cold water supply, Gas piping for
kitchen, Public address and Back ground music,
Telecommunication (PABX), Master Antenna (MATV),
Security and digital surveillance (CCTV), Building Management,
Swimming Pool support, Waste water treatment, Irrigation
system and Vertical Transportation system (lifts), Medical Gas



PROJECT REFERENCE

Health Cares



- Project Title : **PATANA MEDICAL CENTER**
(The Renovation)
- Location : Bangkok
- Owner : Patana Medical Center
- Commissioned : -
- Project Summary : Renovate 4 building, 900 sq.m., 950 sq.m., and 2 buildings area 1,000 sq.m. each
- Construction Cost : -
- Firm's Role : M&E System Design: Air-conditioning, Ventilating, Electrical Power, Telecommunication, Fire Alarm, Drinking water system, CCTV, Fire Fighting and Public Address system.



- Project Title : **SONGKLANAKARIN HOSPITAL**
- Location : Songkla Thailand
- Owner : -
- Commissioned : 2010
- Project Summary : Hospital building including OR and etc.
- Firm's Role : M&E System Design: Air-conditioning, Ventilating, Electrical Power, Lighting, Telecommunication, Fire Alarm, Building Management, CCTV, Hot water generation, Fire Fighting and Security System



PROJECT REFERENCE

Health Cares

Project Title	:	RATNIN EYE HOSPITAL
Location	:	Asoke Road, Bangkok.
Owner	:	Ratnin Hospital Co.,Ltd.
Commissioned	:	2004
Project Summary	:	New building : 7,000 Sq.m., 5 storeys. Existing building : 5 storeys
Firm's Role	:	M&E System Design: Air-conditioning, Ventilating, Electrical Power, Lighting, Telecommunication, Fire Alarm, Vertical Transportation, Plumbing, Fire Fighting and Sanitary System.



PROJECT REFERENCE

Health Cares



Project Title : **KALASIN HOSPITAL**
Location : Kalasin
Commissioned : 2001
Project Summary : 7,500 Sq., 7-Storey Building.
Firm's Role : M&E System Design: Air-conditioning, Ventilating, Electrical Power, Lighting, Telecommunication, Fire Alarm, Vertical Transportation, Plumbing, and Sanitary System.



PROJECT REFERENCE

Health Cares



Project Title : **SRINAKARIN HOSPITAL**

Location : Khon Kaen

Owner : Srinakarin Hospital

Commissioned : 2004

Project Summary : Site Area: 40,000 Sq.m., 19-Storey Building.

Firm's Role : M&E System Design: Air-conditioning, Ventilating, Electrical Power, Lighting, Telecommunication, Fire Alarm, Vertical Transportation, Plumbing, Fire Fighting and Sanitary System.



Project Title : **KHON KAEN HOSPITAL**

Location : Khon Kaen

Commissioned : 2000

Project Summary : 6,000 Sq.m., 5-Storey Building.

Firm's Role : M&E System Design: Air-conditioning, Ventilating, Electrical Power, Lighting, Telecommunication, Fire Alarm, Vertical Transportation, Plumbing, Fire Fighting and Sanitary System.



PROJECT REFERENCE

Health Cares



Project Title : **BUAYAI HOSPITAL**
 Location : Nakornratchasema
 Commissioned : 2000
 Project Summary : 6,000 Sq.m., 5-Storey Building.
 Firm's Role : M&E System Design: Air-conditioning, Ventilating, Electrical Power, Lighting, Telecommunication, Fire Alarm, Vertical Transportation, Plumbing, and Sanitary System.



Project Title : **THAI RED CROSS SOCIETY (Blood Center)**
 Location : Henri Dunang Road, Bangkok.
 Owner : Thai Red Cross Society
 Commissioned : 2005
 Firm's Role : M&E System Design: Air-conditioning, Ventilating, Plumbing, Sanitary, Electrical Power, Lighting, Telecommunications, CCTV, Fire Alarm and Building Automation System, Clean Rooms and Vertical Transportation System.





W. AND ASSOCIATES



PROJECT REFERENCE

INDUSTRIAL





PROJECT REFERENCE

- Yuasa Battery Factory, Gateway Industrial Estate
- Cheena Gasket Factory
- Siam Nastech Factory (Extension)
- Fuji Serina Factory
- Cornel Polymer Factory
- Siamwala Warehouse
- Super Gold Factory
- Universal Toy Factory (Match Box)
- Pranda Jewelry Factory
- Artico Craft Toy Factory
- Match Box Factory
- American Standard Factory, 2nd Phase
- Tai Ping Factory, 2nd Phase
- Coca-Cola Botting Plants (Hua Mak, Pathumthani, Khon Kaen, Lampang, Haad Yai)
- Bangkok Domtex
- NTS Steelmill
- Bangkok Weaving Mill
- Siam Tsuchiya Factory
- Siam Tsuchiya Mfg. Factory, Bangplee



PROJECT REFERENCE

Industrial



Project Title : **CHEENA GASKET FACTORY**

Commissioned : 1999

Firm's Role : M&E System Design: Air-conditioning, Ventilating, Electrical Power, Lighting, Telecommunication, Fire Alarm, Plumbing and Sanitary System.

ชื่อโครงการ : โรงงาน ชีนา กาสเก็ต

ที่ตั้ง : กรุงเทพมหานคร

ปีที่เริ่มดำเนินงาน : 2540

ปีที่เสร็จสิ้นการดำเนินงาน : 2542

มูลค่าโครงการ : 2,200 ล้านบาท

พื้นที่โครงการ : 120,000 ตร.ม.

ชื่อของกลุ่มที่ปรึกษาฯ : บริษัท ไทย บุรินทร์ จำกัด

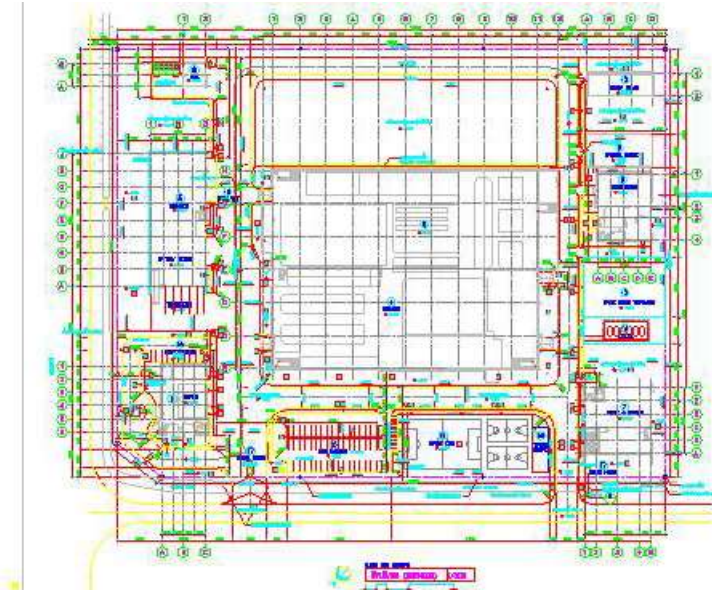
รายละเอียดโดยย่อของโครงการ : เป็นอาคารสำนักงาน และโรงแรม อาคารสำนักงานสูง 28 ชั้น อาคารสำนักงานสูง 25 ชั้น

หน้าที่ความรับผิดชอบในโครงการ : บริษัทได้เป็นผู้ทำการออกแบบงานวิศวกรรมระบบสำหรับอาคาร

- ระบบปรับอากาศ ระบายอากาศ
- ระบบไฟฟ้า โทรคมนาคม และระบบแจ้งเหตุเพลิงไหม้อัตโนมัติ
- ระบบรักษาความปลอดภัย พร้อมติดตั้งกล้องวงจรปิด และระบบสุขาภิบาล

PROJECT REFERENCE

Industrial



- Project Title : **YUASA BATTERY FACTORY**
- Location : Gateway Industrial Estate
- Owner : Yuasa (Thailand) Co., Ltd.
- Commissioned : 2003
- Project Summary : 30,000 Sq.m. of factory and Storage
- Firm's Role : M&E System Design: Air-conditioning, Ventilating, Electrical Power, Lighting, Telecommunication, Fire Alarm, Plumbing, Fire Fighting and Sanitary System.



PROJECT REFERENCE

Industrial



Project Title : **PRANDA JEWELRY**
Location : Bang Na ,Bangkok
Owner : Pranda Jewelry Pcl.
Commissioned : 1984
Project Summary : - Sq.m. of factory and Storage
Firm's Role : M&E System Design: Air-conditioning, Ventilating,
Electrical Power, Lighting, Telecommunication,
Fire Alarm, Plumbing, Fire Fighting and Sanitary System.



PROJECT REFERENCE

Industrial

- Project Title : **Bangkok Domtex**
- Location : Lat Lum Kaeo , Pathum Thani
- Owner : Bangkok Domtex Co.,Ltd.
- Commissioned : 1988
- Project Summary : - Sq.m. of factory and Storage
- Firm's Role : M&E System Design: Air-conditioning, Ventilating, Electrical Power, Lighting, Telecommunication, Fire Alarm, Plumbing, Fire Fighting and Sanitary System.





W. AND ASSOCIATES



PROJECT REFERENCE

COMPUTER CENTER





PROJECT REFERENCE

- NORTH PARK COMPUTER CENTER, STOCK EXCHANGE OF THAILAND
- COMPUTER CENTER, SIAM COMMERCIAL BANK, CHIDLUM OFFICE
- COMPUTER CENTER, KRUNG THAI BANK HEAD OFFICE
- ESSO'S COMPUTER CENTER (NEW), BANGKOK

- UNITED NATIONS' COMPUTER CENTER, BANGKOK, 1972
- SITA SWITCHING CENTER, RAJDAMRI ARCHDE, 1973
- COMPUTER CENTER, AT BANK NOTE PRINTING PLANT, BANG OF THAILAND, 1977
- COMPUTER CENTER 1st EXPANSION, SIAM COMMERCIAL BANK, CHIDLUM OFFICE
- COMPUTER CENTER 2nd EXPANSION, SIAM COMMERCIAL BANK, CHIDLUM OFFICE
- NORTHERN COMPUTER CENTER, SIAM COMMERCIAL BANK, CHIENG MAI
- SOUTHERN COMPUTER CENTER, SIAM COMMERCIAL BANK ,HAD YAI
- SIAMNER COMPUTER CENTER
- GOVERNMENT SAVING BANK COMPUTER CENTERS AT BANGKOK, CHIENG MAI AND NOKORNRAJSIMA
- RENOVATION OF UPS FOR SIAM COMMERCIAL BANK COMPUTER CENTER
- DATA CENTER, THAI AIRWAYS INTERNATIONAL



PROJECT REFERENCE

Computer Center



Project Title : SET Training Center, North Park Building

Location : North Park Estate

Owner : Stock Exchange of Thailand

Commissioned : 2005

Project Summary : 10,000 Training Facilities

Firm's Role : Project Management and Construction Supervision work (PMSC) (HVAC)



Project Title : SIAM COMMERCIAL BANK (Old Head Quarter)

Location : Petchburi Rd., Bangkok

Owner : Siam Commercial Bank Public Company Limited.

Commissioned : -

Project Summary : Office Building.

Firm's Role : M&E System Design: Air-conditioning, Ventilating, Electrical Power, Lighting, Telecommunication, Fire Alarm, Security and CCTV.



PROJECT REFERENCE

Computer Center



Project Title : **KRUNGTHAI BANK**
(Head Quarter)

Location : Sukhumvit Rd., Bangkok

Owner : Krungthai Bank Public Company Limited.

Commissioned : 1978

Project Summary : Site Area: 39,000 Sq.m., 15-Storey Office Building.

Firm's Role : M&E System Design: Air-conditioning,
Ventilating, Electrical Power, Lighting,
Telecommunication, Fire Alarm and Security System.



Project Title : **ESSO TOWER**
(Head Quarter)

Location : Rama IV road

Owner : Esso Thailand.

Project Summary : 22-Storey Office Building.

Firm's Role : M&E System Design: Air-conditioning,
Ventilating, Electrical Power, Lighting, Telecommunication,
Fire Alarm, Security, CCTV, Vertical Transportation,
Building Automation, Plumbing and Sanitary System.
Construction Supervision (ESSO office and Chongnonsri)





W. AND ASSOCIATES



PROJECT REFERENCE

CONVENTION





PROJECT REFERENCE

- AUDITORIUM KHON KHAEN UNIVERSITY
- MAE-PING CONVENTION (IMPERIAL MAE-PING HOTEL)
- พิพิธภัณฑ์ การเรียนรู้แห่งชาติ



PROJECT REFERENCE

Convention



- Project Title : **AUDITORIUM**
Khon Khaen University
- Location : Maliwan Road, Khonkhaen.
Owner : Khonkhaen University.
Commissioned : 1997
Project Summary : Site Area: Multipurpose Area 3,000 Sq.m.,
4,000-Person Auditorium.
- Firm's Role : M&E System Design: Air-conditioning, Ventilating, Plumbing,
Sanitary, Electrical Power, Lighting, Telecommunication,
Fire Alarm, Fire Protection and Sound System.



- Project Title : **MAE-PING CONVENTION**
(IMPERIAL MAE-PING HOTEL)
- Location : Chiang Mai
Commissioned : 2000
Project Summary : 4,000 Sq.m.Convention Building
Firm's Role : M&E System Design: Air-conditioning,
Ventilating, Electrical Power, Lighting,
Telecommunication, Fire Alarm, Plumbing,
Fire Fighting and Sanitary System.



PROJECT REFERENCE

Convention

- Project Title : พิพิธภัณฑ์ การเรียนรู้แห่งชาติ
- Location : Rattanakosin District, Bangkok
- Owner : -
- Commissioned : 2007
- Project Summary : a 10,000 sq.m. of Museum Spaces.
- Firm's Role : M&E System Design: Air-conditioning, Ventilating, Electrical Power, Lighting, Telecommunication, Fire Alarm, CCTV, Fire Fighting, Waste water treatment and Security System.



W. AND ASSOCIATES



PROJECT REFERENCE

EDUCATIONS





PROJECT REFERENCE

- THAMMASAT UNIVERSITY
(Rangsit Campus)
- AUDITORIUM KHON KHAEN UNIVERSITY
- MAE-FAH LUANG UNIVERSITY
- BANGKOK UNIVERSITY ART
GALLERYCHENGWATTANA
- KHON KAEN UNIVERSITY LABORATORY



PROJECT REFERENCE

Educations



- Project Title : **THAMMASAT UNIVERSITY**
(Rangsit Campus)
- Location : Vipavadee-Rangsit Road, Pathumthani.
Owner : Thammasat University.
Commissioned : On-going Since 1987
Project Summary : Responsible for:
- Main Admission Office Building
 - Lecture Building I
 - Lecture Building III
 - Lecture Building IV
 - Faculty of Engineering Building (Int.)
 - Library Building
 - Laboratories
 - Multi-Purpose Building
- Firm's Role : M&E System Design: Air-conditioning and Ventilating System.



- Project Title : **AUDITORIUM**
Khon Khaen University
- Location : Maliwan Road, Khonkhaen
Owner : Khonkhaen University
Commissioned : 1997
Project Summary : Site Area: Multipurpose Area 3,000 Sq.m., 4,000-Person Auditorium.
Firm's Role : M&E System Design: Air-conditioning, Ventilating, Plumbing, Sanitary, Electrical Power, Lighting, Telecommunication, Fire Alarm, Fire Protection and Sound System.



PROJECT REFERENCE

Education



- Project Title : **MAE-FAH LUANG UNIVERSITY**
- Location : Chiang Rai
- Owner : Ministry of Education
- Commissioned : 1997 - 2002
- Project Summary : 2,000 rais of Education Complexes comprises of Education Centers, Library, Dormitories and etc.
Total Construction areas: 180,000 sq.m. Total Construction Cost: 2,500 Millions B.
- Firm's Role : Infrastructures – Design of Waste Water Treatment Plants, Water Supply Generation and Distribution System for the whole site.
Education Complexes – Design of building system including Air-conditionings, Ventilating, Electrical Power, Lightings, Telecommunications, Fire Alarm, Fire Fighting, Plumbing and Lightning Protection systems.



- Project Title : **BANGKOK UNIVERSITY ART GALLERY**
- Location : Klong-Toey / Rama IV intersection
- Owner : Bangkok University
- Commissioned : 2006
- Project Summary : Art Gallery, Student Union, Conference Rooms
- Firm's Role : M&E System Design: Air-onditioning, Ventilating, Plumbing, Sanitary, Electrical Power, Lighting, Telecommunications, CCTV, Fire Alarm and Building Automation System and Vertical Transportation.



PROJECT REFERENCE

Education



Project Title : **KHON KAEN UNIVERSITY LABORATORY**
Biological Safety Lab (P3 Level)

Location : Khon Kaen

Owner : Khon Kaen University

Commissioned : 2007

Project Summary : Total building area: 20,000 sq.m.

Firm's Role : M&E System Design: Air-conditioning, Ventilating, Plumbing, Sanitary, Electrical Power, Lighting, Telecommunications, CCTV, Fire Alarm and Building Automation System. Clean room design.





W. AND ASSOCIATES



PROJECT REFERENCE

MASTER PLAN





PROJECT REFERENCE

- STATE RAILWAY OF THAILAND The Master Plan for Land
- MAE-FAH LUANG UNIVERSITY
- PRIVY COUNCIL OFFICE สำนักงานเลขาธิการองคมนตรี
- BAAN MANANGKASILA
- THE GOVERNMENT HOUSE
- NATIONAL HOUSING AUTHORITY DIN DAENG SITE
(Construction Phase)
- RATCHADAMNOEN



PROJECT REFERENCE

Phaholyothin Site

Makkasan Site



Master plan

Project Title : **STATE RAILWAY OF THAILAND**
The Master Plan for Land Use

Location : Phaholyothin – 2,000 Rais
 Makkasan - 300 Rais

Owner : State Railway of Thailand

Commissioned : 1998

Project Summary : The site includes Transportation Hub,
 Hotel, Convention Center, Residential,
 School and Commercial Buildings.
District Cooling and Utilities Tunnel is introduced.



Project Title : **MAE-FAH LUANG UNIVERSITY**

Location : Chiang Rai

Owner : Ministry of Education

Commissioned : 1997 - 2002

Project Summary : 2,000 rais of Education Complexes comprises of Education Centers,
 Library, Dormitories and etc.Total Construction areas: 180,000 sq.m.
 Total Construction Cost: 2,500 Millions B.

Firm's Role : Infrastructures – Design of Waste Water Treatment Plants,
 Water Supply Generation and Distribution System for the whole site.
 Education Complexes – Design of building system including Air conditionings,
 Ventilating, Electrical Power, Lightings, Telecommunications, Fire Alarm,
 Fire Fighting, Plumbing and Lightning Protection systems.



PROJECT REFERENCE

Master plan



- Project Title : **PRIVY COUNCIL OFFICE**
สำนักงานเลขาธิการรองคมนตรี
- Location : Saranrom Palace, Bangkok.
- Owner : The Office of His Majesty's Principal Private Secretary
- Commissioned : 2004
- Project Summary : 8,000 Sq.m. 3-Stories Building. 7,000 sq.m. of office area.
- Firm's Role : M&E System Design: Air-conditioning, Ventilating, Electrical Power, Lighting, Telecommunication, Fire Alarm, Vertical Transportation, Plumbing, Fire Fighting and Sanitary System.

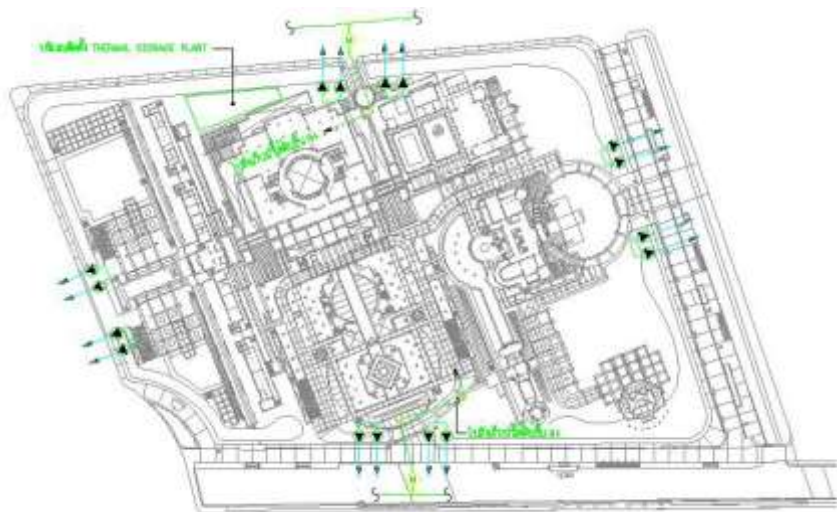


- Project Title : **BAAN MANANGKASILA**
- Location : Bangkok.
- Owner : The office of the Prime Minister
- Commissioned : 2005
- Project Summary : 8,000 Sq.m. 3-Stories Building.
- Firm's Role : M&E System Design: Air-conditioning, Ventilating, Electrical Power, Lighting, Telecommunication, Fire Alarm, Vertical Transportation, Plumbing, Fire Fighting and Sanitary System.



PROJECT REFERENCE

Master plan



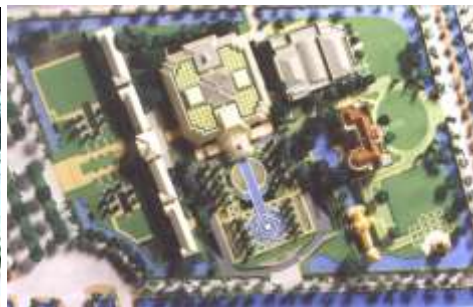
Project Title : **THE GOVERNMENT HOUSE**

Location : Phitsanu Lok Road, Bangkok.

Owner : The office of Prime Minister

Commissioned : 1998

Firm's Role : Study of Infrastructure and Land Use.
Outline for Mechanical, Electrical and other Utilities Systems.
District Cooling and Utilities Tunnel is introduced.



PROJECT REFERENCE

Master plan

SITE A



SITE B



SITE C

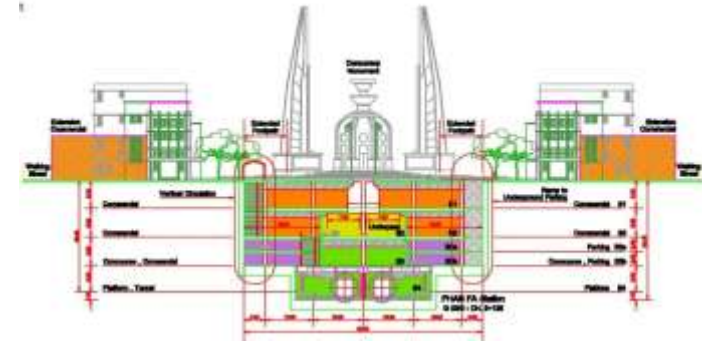
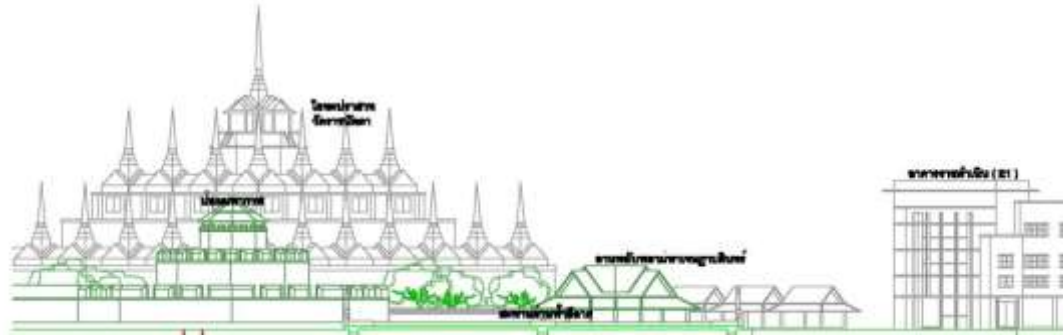


- Project Title : **NATIONAL HOUSING AUTHORITY
DIN DAENG SITE (Construction Phase)**
- Location : Din Daeng, Bangkok.
- Owner : National Housing Authority (NHA)
- Project Summary : Site A: 720 units
Site B: 320 units
Site C: 1,200 units
- Firm's Role : M&E System Design: Air-conditioning, Ventilating, Electrical Power, Lighting, Telecommunication, Fire Alarm, Vertical Transportation, Plumbing, Fire Protection and Sanitary System.



PROJECT REFERENCE

Master plan



- Project Title : **RATCHADAMNOEN**
- Location : Ratchadamnoen Rd., Bangkok
- Owner : The Crown Property Bureau
- Commissioned : 2002
- Project Summary : The site includes Transportation Hub, Residential, School and Commercial Buildings.
- Firm's Role : Outline for Improving of Infrastructure and Utilities for area scope of work





W. AND ASSOCIATES



PAST PROJECTS



PAST EXPERIENCE

Hotels



W. RETREAT, SAMUI
- M.E.P. -



BANYAN TREE, SAMUI
- M.E.P. -



INTERCONTINENTAL HUA HIN
- M.E.P. -



SHERATON GRANDE LAGOON HUA HIN
- M.E.P. -



LAGUNA BEACH RESORT
(Part of LAGUNA Phuket)
- M.E.P. -

M = Mechanical E = Electrical P = Plumbing



PAST EXPERIENCE

Hotels



DOUBLE TREE by HILTON
M,E,P



MODE SATHORN HOTEL
M,E,P



HILTON SUKHUMVIT BANGKOK
M,E,P



MARIOTT RAYONG
M,E,P

M = Mechanical E = Electrical P = Plumbing



PAST EXPERIENCE

Hotels



BAIYOKE SKY HOTEL
Currently the tallest building in Thailand
- M.E.P. -



GRAND HYATT ERAWAN HOTEL
- M.E. -



TWIN LOTUS HOTEL
- M.E.P. -



HOLIDAY INN CHIANG MAI
- M.E.P. -



WESTIN GRANDE SUKHUMVIT
- M. -



SIAM CITY HOTEL
- M.E. -



INDEPENDENCE HOTEL CAMBODIA
- M.E.P. -



FOUR SEASONS HOTEL
- M.E. -



J.W. MARRIOTT HOTEL
(Ploenchit Center)
- M. -



SOL TWIN TOWERS
- M.E. -



METROPOLE HOTEL, PHUKET
- M.E.P. -

M = Mechanical E = Electrical P = Plumbing



PAST EXPERIENCE

Hotels



MANDARIN ORIENTAL The Renovation
Back of House, Main Lobby



HOLIDAY INN PATTAYA
- M.E.P. -



S31 HOTEL
- M.E.P. -



HOTEL PLAZA ATHENEES
- M.E.P. -



LE MERIDIEN BANGKOK
- M.E.P. -



MERCURE AMBASSADOR HOTEL
(Renovation)
- M.E.P. -



HOLIDAY INN REGENT BEACH CHA-AM (Renovation)
- M.E.P. -



FISHERMAN'S VILLAGE
- E. -



DUSIT AND RESORT HOTEL
- M.E.P. -



SHERATON GRAND LAGOON
(Rebranded to ANGSANA)



SALA-SAMUI RESORTS
- M.E.P. -



BAAN BORAN CHIANG SAEN
(ANANTARA GOLDEN TRIANGLE)

M = Mechanical E = Electrical P = Plumbing



PAST EXPERIENCE

Residential



SILVER BEACH CONDOMINIUM
- E -



CITY LAKE CONDOMINIUM
- M.E. -



LA CASCADE
- E -



SATHORN GARDEN
- M -



ROYAL CHAROENKRUNG
- M.E. -



LUMPINI PARK VIEW
- M.E.P. -



PARK BEACH CONDOMINIUM
- E -



SKY BEACH CONDOMINIUM
- E -



JOMTIEN COMPLEX
- E -



CENTRAL BANGNA (East Tower)
- M.E.P. -



COCONUT BEACH CONDOMINIUM
- M.E.P. -



THE PRESIDENT PARK
- M.E. -

M = Mechanical E = Electrical P = Plumbing



PAST EXPERIENCE

Residential



SATHORN PARK PLACE
- M.E.P -



TRIDHOS CITY MARINA
- M.E.P -



INTRO BY RASA Condominium
- M.E.P -



BANGKOK RIVER PARK
- M.E.P -



VILLA RACHATEWI
- M.E.P -



METRO JOMTIEN CONDOTEL
- M.E.P -



PARKLAND PHASE II
- M.E.P -



THANA CITY



BAAN MON-CHALE
- M.E.P -

M = Mechanical E = Electrical P = Plumbing



PAST EXPERIENCE

Residential



MODE SUKHUMVIT 61
-M,E,P-



VILLA ASOKE
-M,E,P-



VERTIQ CONDOMINIUM
-M,E,P-



VIA BOTANI
-M,E,P-



URBANO SATHORN
-M,E,P-



THE AXIS CONDOMINIUM
-M,E,P-



KHAO-YAI RESIDENCE
-M,E,P-

M = Mechanical E = Electrical P = Plumbing





PAST EXPERIENCE

Offices



MALEENOND TOWER
(Channel 3 TV Studio)
- M,E,P -



ESSO BUILDING



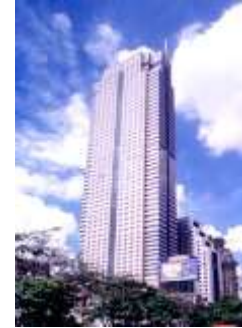
GRAND AMARIN TOWER
- M,E,P -



UNITED CENTER
- M,E -



C.T.I TOWER
- M,E -



JEWELRY TRADE CENTER
- M,E,P -



S.S.P TOWER III
- M,E,P -



SRIJULSUP TOWER
- M,E -



THE NATION TOWER I, II
- M -



SIRIPINYO BUILDING
- M,E -



WALL STREET TOWER
- M,E -



GEMS TOWER
- M,E,P -

M = Mechanical E = Electrical P = Plumbing





PAST EXPERIENCE

Offices



ELEPHANT BUILDING
- M,E,P -



BEAUTY GEMS BUILDING
- M,E -



VILLA OFFICE
- M,E,P -



MALAYSIAN EMBASSY
- M -



THAI LIFE INSURANCE



MINISTRY OF FINANCE
- E -



MINISTRY OF FOREIGN AFFAIR
- M -



UNITED NATION - ESCAP
- M,E -



BANK NOTE PRINTING
- M,E -



METROPOLITAN ELECTRICITY
AUTHORITY, BANGKHAEN
- M -



PRIVY COUNCIL OFFICE
- M,E,P -



LECONCORDE COMPLEX
- M,E,P -



PARLIAMENT BUILDING (OFFICE)
- M,E,P -

M = Mechanical E = Electrical P = Plumbing



PAST EXPERIENCE

Corporate Offices



SIAM COMMERCIAL COMPLEX (PHASE III)
- M.E.P. -



SIAM COMMERCIAL BANK
(Old Head Quarter)



THAI AIRWAY INTERNATIONAL (Head Quarter)
- M.E. -



SHELL HEAD OFFICE
- M -



SAMAGGI TOWER
- M.E.P. -



BANK OF ASIA
(Head Quarter)
- M -



KRUNGTHAI BANK
(Head Quarter)
- M.E. -



IFCT BUILDING
- M.E. -

M = Mechanical E = Electrical P = Plumbing



PAST EXPERIENCE

Retails



CENTRAL PLAZA CHIANG-RAI
- M.E.P. -



ASIATIQUE the river front
- M.E.P. -



RAIN HILL
- M.E.P. -



THE VUE
- M.E.P. -



PORTO CHINO
- M.E.P. -



BIG C Super Center
- M.E.P. -



CENTRAL TOWN CENTER RATTANATHIBET
- M.E.P. -



CENTRAL PLAZA SURATTHANI
- M.E.P. -



CENTRAL PLAZA PINKLAO (The Renovation)
- M.E.P. -

M = Mechanical E = Electrical P = Plumbing



PAST EXPERIENCE

Retails



AMARIN PLAZA
-M.E.-



BANGRAK PLAZA
-M-



THE ERAWAN BANGKOK
-M.E.P.-



SILOM COMPLEX
-E.P.-



RAJADAMRI ARCADE
-M.E.-



SORAYA SHOPPING, PHNOM PENH
-M.E.P.-



GOLDEN CITY SHOPPING CENTER
PHNOM PENH



LAKSI PLAZA
-M.E.-

M = Mechanical E = Electrical P = Plumbing



PAST EXPERIENCE

Health Cares



SRINAKARIN HOSPITAL
-M,E,P-



KHONKAEN HOSPITAL
-M,E,P-



BUA YAI HOSPITAL
-M,E,P-



RATNIN EYE HOSPITAL
-M,E,P-



KALASIN HOSPITAL
-M,E,P-



BLOOD CENTER
THAI RED CROSS SOCIETY
-M,E,P-



SIRIRAJ HOSPITAL
Laboratory and IT studies for medical student
-M,E,P-

M = Mechanical E = Electrical P = Plumbing



PAST EXPERIENCE

Health Cares



PATANA MEDICAL CENTER
-M,E,P-



SONGLANAKARIN HOSPITAL
-M,E,P-

M = Mechanical E = Electrical P = Plumbing



PAST EXPERIENCE

Educations / Gym / Master plan



- THAMMASAT UNIVERSITY**
(Rangsit Campus)
- Main Admission Office Building
 - Lecture Building I
 - Lecture Building III
 - Lecture Building IV
 - Faculty of Engineering Building (Int.)
 - Library Building (Bangkok campus)
 - Laboratories
 - Multi-Purpose Building (Bangkok campus)



MAEFAH-LUANG UNIVERSITY
Education Buildings
- M.E.P -



Phaholyothin Site



Makkasan Site



AUDITORIUM
Khon Khaen University
- M.E -



THAMMASAT UNIVERSITY LIBRARY
- M -



BANGKOK UNIVERSITY ART GALLERY
- M.E.P -

STATE RAILWAY OF THAILAND
The Master Plan for Land Use



GYMNESIUM, 13th ASIAN GAME
- M -



HUAMARK STADIUM
- E -

M = Mechanical E = Electrical P = Plumbing

