

MECHANICAL ENGINEERING
ELECTRICAL ENGINEERING
ENERGY CONSERVATION
STRUCTURAL ENGINEERING



INTRODUCTION

W. AND ASSOCIATES's group activities started in early 1965. Group activities were focusing on M&E engineering design services. In 1973, W. AND ASSOCIATES ROP. was then established to be consulting firm specializing in Mechanical, Plumbing, Sanitary, Electrical and Telecommunication .

During Thailand's booming economy, W. AND ASSOCIATES Consultants Co., Ltd. and W. AND ASSOCIATES Designs Co., Ltd. were established to cope with the fast-expanding real estate business. W. AND ASSOCIATES engineers had under taken responsibility of numerous projects for various engineering services, both design and construction supervision. Engineering services include electrical power, lighting, fire alarm system, security system, sound system, telephone system, telecommunication system, building automation system, air-conditioning system, ventilation system, smoke control system, vertical transportation, plumbing system, sanitary system, waste treatment system, computer site support system and other related systems for several major buildings and factories in Thailand.

Moreover, in 1996, W. AND ASSOCIATES has been one of companies approved by Department of Energy Development and Promotion (D.E.D.P.) for being registered as a consultant company in energy conservation program initiated by D.E.D.P. W. AND ASSOCIATES, as a registered consultant company, will be auditing the designated buildings and factories, which cover thousands buildings nationwide, to improve building's energy

In 2012 the group has begun the service in Civil/Structural Engineering discipline with all engineering disciplines included in one umbrella, the group now is focusing on providing one-stop, all-in-one engineering service for the client.

MESSAGE FROM PARTNERS

Our company is one of the earliest Thai owned consulting firms specializing in Building System (1965) / Civil and Structural Engineering Designs (2012). From the beginning, our company's philosophy has always been ethical practices with good and practical engineering designs. Our design principles for all of our projects are functionally advanced and economical designs meeting the present and future requirements of our clients, energy saving, ease of operation and maintenance. We will do our utmost to offer the designs which best serve our clients.

BOARD OF DIRECTORS



WICHAI LAKSANAKORN
Chairman / Co-Founder



WITHU RUKSVANICHPONG
Co-Founder



CHOKEWICHIT LAKSANAKORN
Managing Director

ENGINEERING SERVICES

CIVIL AND STRUCTURAL DESIGN

- 1.1 Structural work
- 1.2 Civil and Infrastructure work
- 1.3 Earthwork
- 1.4 Site Drainage
- 1.5 Investigation of Structural Integrity
- 1.6 Non-Destructive Structural Test

MEP DESIGN

- 2.1 ELECTRICAL SYSTEMS
 - 2.1.1 Power
 - 2.1.2 Lighting
 - 2.1.3 Grounding
 - 2.1.4 Emergency Power
- 2.2 TELECOMMUNICATION SYSTEM
 - 2.2.1 Premise Distribution System
 - 2.2.2 PABX
 - 2.2.3 Telephone Wiring System
 - 2.2.4 High Speed Data Cabling System

2.3 FIRE ALARM SYSTEM

- 2.4 SECURITY SYSTEM
 - 2.4.1 Closed Circuit Television (CCTV)
 - 2.4.2 Access Control
 - 2.4.3 Burglar Alarm

2.5 AUDIO-VISUAL SYSTEM

- 2.5.1 Master Antenna Television system (MATV)

2.6 VERTICAL TRANSPORTATION SYSTEM

- 2.6.1 Elevators
- 2.6.2 Escalators

2.7 BUILDING AUTOMATION SYSTEM (BAS)

- 2.7.1 Energy Management
- 2.7.2 Comfort Control
- 2.7.3 Maintenance Management

2.8 SANITARY SYSTEM

- 2.8.1 Waste Water Treatment
- 2.8.2 Soil, Waste, Vent piping System
- 2.8.3 Site Drainage System

2.9 AIR CONDITIONING AND VENTILATING SYSTEMS

- 2.9.1 Exhaust and Ventilating System
- 2.9.2 Air-Conditioning System
- 2.9.3 Smoke Control System
- 2.9.4 Clean room System
- 2.9.5 Thermal Storage

2.10 PLUMBING SYSTEMS

- 2.10.1 Cold Water Distribution System
- 2.10.2 Hot Water Distribution System
- 2.10.3 Boiler Plant
- 2.10.4 Fire Extinguishing System
- 2.10.5 Sprinkler System
- 2.10.6 LPG Gas Piping System
- 2.10.7 Swimming Pool

PROJECT / CONSTRUCTION MANAGEMENT

- 3.1 Project / Construction Management
- 3.2 Site Supervision

OTHER SERVICES

- 4.1 ENERGY CONSERVATION
 - 4.1.1 Auditing Designated Buildings and Factories as a Registered Consultant to Department of Energy Development and Promotion
 - Registration Number (Building Category) : 12
 - Registration Number (Factory Category) : 45
 - 4.1.2 Energy Consumption Surveys in Building
- 4.2 VALUE APPRAISAL AND DUE DILIGENCE SERVICE



PROFESSIONAL RECORDS

HOTEL / RESORT

- 1.1 Banyan Tree Resort and Spa, Samui
- 1.2 W. Retreat and Residences, Samui
- 1.3 InterContinental Hua Hin
- 1.4 S31 Hotel
- 1.5 Mandarin Oriental Bangkok (the renovation)
- 1.6 Le Meridien Bangkok, Surawong
- 1.7 The Ambassador hotel (the renovation)
- 1.8 Holiday Inn Regent Beach Cha-Am
- 1.9 Holiday Inn Pattaya
- 1.10 Sheraton Grande Lagoon, Hua Hin
- 1.11 Hotel Plaza Athenes
- 1.12 Grand Hyatt Erawan Hotel
- 1.13 Westin Grande Sukhumvit (Renovation)
- 1.14 J.W. Marriott Hotel
- 1.15 Baiyoke 2 Sky Hotel
- 1.16 Swissotel (Le Concorde Complex)
- 1.17 Bangkok Peninsula Hotel (Now : Four Seasons Hotel)
- 1.18 The Fisherman's Village
- 1.19 Choengmon Resort, Samui
- 1.20 Metropole Hotel, Phuket
- 1.21 Dusit Resort Hotel & Polo Club, Cha-Am
- 1.22 Chiangmai Holiday Inn (Green Hill) Hotel
- 1.23 Twin Lotus Hotel, Nakorn Srithamarat
- 1.24 Kempinski Hotel
- 1.25 Movempic Hotel
- 1.26 Siam City Hotel
- 1.27 Swiss Garden Hotel
- 1.28 Bangkok Twin Tower Hotel
- 1.29 Bann Boran Chiangrai Hotel
- 1.30 Laguna Beach Club Resort
- 1.31 Siam Ballroom Phase 2 (Siam Intercontinental Hotel)
- 1.32 Royal Chiang Mai Hotel And Golf Club
- 1.33 Independence Hotel, Kampongsm, Cambodia (Renovation)
- 1.34 Little Duck Hotel, Chiangrai

OFFICES

- 2.1 Thanaphoom Tower
- 2.2 The Elephant Building, Ratchayothin
- 2.3 United Center Tower
- 2.4 Siripinyo Building
- 2.5 S.S.P. Building 3
- 2.6 C.T.I. Tower
- 2.7 Maleeonn Tower, Rama IV (including production house of channel 3 television)
- 2.8 Le Concorde Office Tower
- 2.9 Wall Street Tower
- 2.10 Srijuulp Tower
- 2.11 Beauty Gems Tower
- 2.12 Ural Building
- 2.13 Silpathai Building
- 2.14 The Nation Tower I, II
- 2.15 Thai Life Insurance Building, Rattanaibet
- 2.16 Muang Thong Thani Project (Villa Office)
- 2.17 The Malaysian Embassy
- 2.18 The Privy Council Office

CORPORATE OFFICES

- 3.1 Stock Exchange of Thailand (New Headquarters)
- 3.2 Thai Airways International Building, Head Office
- 3.3 Bank of Asia Head Office, Robot Building
- 3.4 Siam Commercial Bank (S.C.B.), Chidlom Office
- 3.5 Siam Commercial Bank (S.C.B.), Phase III, Ratchayothin
- 3.6 Shell Building, Head Office
- 3.7 Lean Tower, Thai Airways International
- 3.8 Samaggi Insurance Tower
- 3.9 Krung Thai Bank, Head Office
- 3.10 I.F.C.T. Buildings
- 3.11 ESSO Building

COMPLEXES

- 4.1 Jewelry Trade Center
- 4.2 Silom Complex
- 4.3 Royal Charoenkrung Tower
- 4.4 Central City Bangna (East Tower)
- 4.5 Ploenchit Center
- 4.6 Siam Commercial Complex (S.C.B.) Phase III
- 4.7 Amarin Plaza
- 4.8 Gems Tower
- 4.9 Laksi Plaza
- 4.10 Le Concorde Complex
- 4.11 Jomthien Complex
- 4.12 Bang-Rak Plaza
- 4.13 Palm Square, Phuket

GOVERNMENT

- 5.1 The Parliament Building, the office
- 5.2 Bank Note Printing Plant, Bank of Thailand
- 5.3 The Ministry Of Foreign Affairs Office, Jaengwattana
- 5.4 Metropolitan Electricity Authority office (MEA), Laksi
- 5.5 The United Nation Tower
- 5.6 Ministry of Finance Office, Rama VI
- 5.7 The United Nations, Economic and Social Commission for Asia and the Pacific (UN-ESCAP), the renovation
 - 5.7.1 Vertical Transportation
 - 5.7.2 HVAC upgrading system

RESIDENTIAL

- 6.1 Villa Asoke
- 6.2 Intro by RASA
- 6.3 Villa Rachatewi
- 6.4 The FAH
- 6.5 The Regent Bangkok
- 6.6 The SAIL Residences, Pattaya
- 6.7 Royal Charoenkrung Tower
- 6.8 Sky Beach
- 6.9 Silom Palace
- 6.10 Silver Beach
- 6.11 Lumpini Park View
- 6.12 Park Beach
- 6.13 City Lake Condominium
- 6.14 La Cascade
- 6.15 The President Park
- 6.16 Sathorn Park Place
- 6.17 Dusit Resort, Hua Hin
- 6.18 Metro Jomthien Condotel
- 6.19 Tridhos City Marina
- 6.20 Bangkok River Park Condominium
- 6.21 Thana City
- 6.22 Apartment Sukhumvit 33
- 6.23 HuaHin Sea-View Paradise
- 6.24 Bann Monchale, Cha-Am
- 6.25 Sathorn Garden
- 6.26 The Elephant Building, Ratchayothin
- 6.27 Central City Bangna (East Tower)
- 6.28 Coconut Beach Condominium, Pattaya

RETAILS

- 7.1 Central Plaza Chiang-Rai
- 7.2 Central Plaza Pinklao (the renovation)
- 7.3 The Vue, Charoen Nakorn
- 7.4 The Rain Hill sukhumvit 47
- 7.5 Nikorn Thani
- 7.6 Porto Chino Community mall
- 7.7 Digital Gateway, Siam Square (Independent Checker)
- 7.8 B/G C Super Center
 - 7.8.1 Thanyaburi Branch
 - 7.8.2 Mahachai Branch
 - 7.8.3 Loomsak Branch
 - 7.8.4 Ta-ma-ka, Kanjanaburi Branch
 - 7.8.5 Rajapruck Branch
 - 7.8.6 Thepkasastree
- 7.9 Central Town Center (Rattanaibet Phase II)
- 7.10 the Erawan Bangkok
- 7.11 Central Department Store, Hua-Mark
- 7.12 Robinson Department Store, Donmuang
- 7.13 Ploenchit Center
- 7.14 Laksi Plaza
- 7.15 Bangrak Plaza
- 7.16 Silom Complex
- 7.17 Amarin Plaza
- 7.18 Cathay Department Store, Bang Kae
- 7.19 Ratchadamri Arcade
- 7.20 Ploenchit Arcade

EDUCATION

- 8.1 IT and Laboratory Studies for medical student, Siriraj Hospital
- 8.2 Laboratories Study and Bio Safety research facilities, Khon Kaen University
- 8.3 Thammasat Gymnasium, The 13th Asian Game Project
- 8.4 Thammasat Multipurpose Building II, Bangkok
- 8.5 Medical Study building for Dentist, Khon Kaen University
- 8.6 Bangkok University art gallery and multipurpose building
- 8.7 Mae-Fah Luang University, Chiang-Rai
- 8.8 Khon Kaen University, Exhibition And Conference Building
- 8.9 Thammasat Central Library, Bangkok
 - 8.9.1 Lecture Building I
 - 8.9.2 Lecture Building II
 - 8.9.3 Lecture Building III
 - 8.9.4 Lecture Building IV
 - 8.9.5 Faculty of Engineering Building (Int.)
 - 8.9.6 Library Building
 - 8.9.7 Laboratories
 - 8.9.8 Multi - Purpose Building
- 8.10 Na-Ray Suan University, Pichit

INDUSTRIALS

- 9.1 Yuasa Battery Factory, Gateway Industrial Estate
- 9.2 Siam Nastech Factory (Extension)
- 9.3 Fuji Serina Factory
- 9.4 Cornel Polymer Factory
- 9.5 Siamwala Warehouse
- 9.6 Super Gold Factory
- 9.7 Universal Toy Factory (Match Box)
- 9.8 Pranda Jewelry Factory
- 9.9 Artico Craft Toy Factory
- 9.10 Match Box Factory
- 9.11 American Standard Factory, 2nd Phase
- 9.12 Tai Ping Factory, 2nd Phase
- 9.13 Coca-Cola Bottling Plants (Hua Mak, Pathumthani, Khon Kaen, Lampang, Haad Yai)
- 9.14 Bangkok Domtex
- 9.15 NTS Steelmill
- 9.16 Bangkok Weaving Mill
- 9.17 Siam Tsuchiya Factory
- 9.18 Cheena Gasket Factory
- 9.19 Siam Tsuchiya Mfg. Factory, Bangplee

COMPUTER CENTERS

- 10.1 North Park Computer Center, Stock Exchange of Thailand
- 10.2 United Nations Computer Center, Bangkok, 1972
- 10.3 Sita Switching Center, Rajdamri Arcade, 1979
- 10.4 Computer Center At Bank Note Printing Plant, Bank Of Thailand, 1977
- 10.5 Computer Center, Siam Commercial Bank, Chidlom Office
- 10.6 Computer Center, Krung Thai Bank Head Office
- 10.7 Computer Center 1st Expansion, Siam Commercial Bank, Chidlom Office
- 10.8 Northern Computer Center, Siam Commercial Bank, Chieng Mai
- 10.9 Computer Center 2nd Expansion, Siam Commercial Bank, Chidlom Office
- 10.10 Southern Computer Center, Siam Commercial Bank, Had Yai
- 10.11 Siamnet Computer Center
- 10.12 Government Saving Bank Computer Centers at Bangkok, Chiangmai, Nakornraisima
- 10.13 ESSO's Computer Center (new), Bangkok
- 10.14 Renovations of UPS for Siam Commercial Bank Computer Center
- 10.15 Data Center, Thai Airways International

HEALTH CARES

- 11.1 Srinakarin Hospital (Srinakarin University)
- 11.2 Ratnin Eye Hospital
- 11.3 Khon Kaen Hospital
- 11.4 Buayai Hospital
- 11.5 Siriraj Hospital, Anantamahidhol Building
- 11.6 Bumrungraj Hospital, Main Power Distribution (Renovation)
- 11.7 Khlangnakorn Hospital, Lampang
- 11.8 Kalasin Hospital

PORTS

- 12.1 Sriracha Harbour
- 12.2 Maptaphut Port
- 12.3 Phuket Deep Sea Port
- 12.4 Songkla Deep Sea Port
- 12.5 Donmuang Airport (Air-Bridge Terminals)

MASTER PLAN, INFRASTRUCTURE PROJECT

- 13.1 Mass Rapid Transport Authority (MRTA) (CSC I)
- 13.2 Mae-Fah Luang University, Chiang-Rai
- 13.3 The Master Plan For National Housing Authority, Din-Daeng Site
- 13.4 Muang Thong Thani, Infrastructure
- 13.5 Telephone Organization Of Thailand, Ploenchit Office
- 13.6 State Railway Of Thailand
 - 13.6.1 Paholyothin Site
 - 13.6.2 Makkasan Site
- 13.7 The Government House

LABORATORY

- 14.1 Siriraj Hospital, IT Studies and Laboratory for Medical studies
- 14.2 Khon Kaen University Laboratory for Medical studies

OTHER PROJECTS

- 15.1 Community Market, Phnom Penh, Cambodia (Soraya Market)
- 15.2 New Office, Storage and Garage of ESSO Standard Thailand Limited, Bangkok
- 15.3 ESSO's Chongnonsri Terminal Security System And Command Center
- 15.4 Multi-Credit Corporation of Thailand Company Limited (Kanchanatat Building Branch)
- 15.5 Thanmasat Gymnasium, The 13th Asian Game
- 15.6 Mae-Ping Convention (Imperial Mae-Ping Hotel)

ENERGY CONSERVATION PROJECT

- 16.1 Hawaii Tower, Bangkok
- 16.2 TOT services center, Maptapud, Rayong
- 16.3 Song Phunburi Hotel, Suphanburi
- 16.4 Petcharat Hospital, Petchburi
- 16.5 Saovaluk Thani Hotel, Surat Thani
- 16.6 Rajabhat Buriram, Buriram
- 16.7 Amarin Plaza, Bangkok
- 16.8 Sukhumvit Hospital
- 16.9 AP National, Samut Prakarn
- 16.10 Samaggi Insurance, Bangkok
- 16.11 Laksi Plaza, Bangkok
- 16.12 Riverside Hotel, Bangkok
- 16.13 Saint John University, Bangkok
- 16.14 Saint John Polytechnic, Bangkok
- 16.15 Saint John School, Bangkok
- 16.16 Saint John International School, Bangkok
- 16.17 BB Building, Bangkok
- 16.18 Pachorn Place, Bangkok
- 16.19 Pacific Price Hotel, Chonburi
- 16.20 Welcome Jomthien Hotel, Chonburi
- 16.21 Talay Thong Tower, Chonburi
- 16.22 Rom-Po Mansion, Bangkok
- 16.23 Jarun Tower, Bangkok
- 16.24 Bang Pa Kong Royal Country Club, Cha Choeng Sao
- 16.25 UN-ESCAP building, Bangkok



W. AND ASSOCIATES



PROJECT REFERENCES

OFFICES



CURRENT PROJECTS

- PARKING GARAGE DESIGN 4 BUILDING (Chiang Mai University)
- COSMO OFFICE
- STOCK EXCHANGE OF THAILAND
- HTOO TRADING OFFICE
- MYINT & ASSOCIATE OFFICE TOWER
- THAI INSURANCE OFFICE
- OFFICE @ ASOKE

PAST PROJECTS

- SIAM COMMERCIAL COMPLEX (PHASE III)
- SIAM COMMERCIAL BANK (Old Head Quarter)
- BANK OF ASIA (Head Quarter)
- KRUNGTHAI BANK (Head Quarter)
- THAI AIRWAY INTERNATIONAL (Head Quarter)
- SHELL BUILDING (Head Quarter)
- MALEENOND TOWER
- ESSO TOWER (Head Quarter)
- ELEPHANT BUILDING
- THE NATION TOWER I, II
- UNITED CENTER
- CTI TOWER
- GRAND AMARIN TOWER
- WALL STREET TOWER
- SIRIPINYO BUILDING
- SSP TOWER III
- SAMAGGI TOWER
- I.F.C.T. BUILDING
- SRIJULSUP TOWER
- BEAUTY GEMS BUILDING
- THAI LIFE INSURANCE
- VILLA OFFICES
- THE MALAYSIAN EMBASSY
- THE PRIVY COUNCIL OFFICE
- MINISTRY OF FINANCE OFFICE
- THE MINISTRY OF FOREIGN AFFAIRS OFFICE
- THE UNITED NATIONS – ESCAP
- BANK NOTE PRINTING PLANT
- METROPOLITAN ELECTRICITY AUTHORITY
- THE PARLIAMENT BUILDING
- LE CONCORDE OFFICE TOWER



CURRENT PROJECTS

Offices



- Project Title : **STOCK EXCHANGE OF THAILAND**
(New Headquarters)
- Location : Rachadapisek Road., Bangkok
Owner : The Stock Exchange of Thailand
Commissioned :
Project Summary : 59,000 sq.m. Office Building
Construction Cost : est. 400 million baht
Firm's Role : M&E System Design: Air-conditioning, Ventilating,
Electrical Power, Lighting, Telecommunication,
Fire Alarm, CCTV, Access Control, Fire Fighting,
Waste water treatment, Storm Drainage, BAS,
Security System and Vertical Transportation.



CURRENT PROJECTS



 Offices


Project Title : **PARKING GARAGE DESIGN (4 BUILDINGS)**
(Chiang Mai University)

Location : Chiang Mai, Thailand

Owner : Chiang Mai University

Commissioned : 2014-2016

Project Summary : Parking Garage design 4 building. Total construction area is estimated at 3,750 sq.m.

Construction Cost : est. 900 million baht

Firm's Role : M&E System Design: Air-conditioning, Ventilating, Electrical Power, Lighting, Telecommunication, Fire Alarm, CCTV, Fire Fighting, Waste water treatment, Storm Drainage, Security System and Vertical Transportation.

Civil and Structural design



CURRENT PROJECTS

Offices



Project Title	:	OFFICE@ASOKE
Location	:	Asoke Road., Bangkok
Owner	:	Bangkok Boutique Hotel (Thailand) Co., Ltd.
Commissioned	:	2012
Project Summary	:	Office 30 stories, Basement 3 stories and Car Park 10 stories, Basement 2 stories
Construction Cost	:	-
Firm's Role	:	M&E System Design: Air-conditioning, Ventilating, Electrical Power, Lighting, Telecommunication, Fire Alarm, CCTV, Access Control, Fire Fighting, Waste water treatment, Recycle water, Irrigation, Security System , Master Clock System and Vertical Transportation.



CURRENT PROJECTS

Offices



Project Title : **MYINT & ASSOCIATE OFFICE TOWER**

Location : PYAY Road, Myanmar

Owner : Mynt Associates

Commissioned : 2010

Project Summary : 29,900 sq.m. Office Building

Construction Cost : est. 170 million baht

Firm's Role : M&E System Design: Air-conditioning, Ventilating, Electrical Power, Lighting, Telecommunication, Fire Alarm, CCTV, Access Control, Fire Fighting, Waste water treatment, Storm Drainage, BAS, Security System and Vertical Transportation.



Project Title : **THAI INSURANCE OFFICE**

Location : Samutprakarn Road

Owner : Thai Life Insurance Co., Ltd.

Commissioned : July 2013 – January 2015

Project Summary : Construction area est. 31,350 sq.m., Office Building

Construction Cost : 700,000,000.00 Baht

Firm's Role : M&E System Design: Air-conditioning, Ventilating, Electrical Power, Lighting, Telecommunication, Data cabling, Fire Alarm, Public Address and Background Music (sound), Master Antenna Television, Access Control, CCTV, Fire Fighting, Waste water treatment, Recycle water, Irrigation, Pool Support, Security System, Vertical Transportation.



CURRENT PROJECTS



- Project Title : **THAIRATH TV & SOUND STUDIO**
- Location : Vibhavadee-Rangsit Rd., Bangkok
- Owner : Vacharapol Co., Ltd.
- Commissioned : -
- Project Summary : 12 -Storey building with separated 1,500 Sq.M. BOH building for chiller plant, transformer and generator house to back up. Comprising of 3 Studio & Control Room, Office area and residence penthouse at the most top floor.
- Construction Cost : -
- Firm's Role : M&E System Design: Air-conditioning, Ventilating, Electrical Power, Lighting, Telecommunication, Fire Alarm, CCTV, MATV, Access Control, Fire Fighting, Waste water treatment, Recycle Water, Irrigation, Security System , Master Clock System and Vertical Transportation.



CURRENT PROJECTS

Offices



Project Title : **HTOO TRADING OFFICE**

Location : Yagon, Myanmar

Owner : Htoo Trading Co.,Ltd.

Commissioned : 2011

Project Summary : 40,000 sq.m. Office Building

Construction Cost : est. 220 million baht

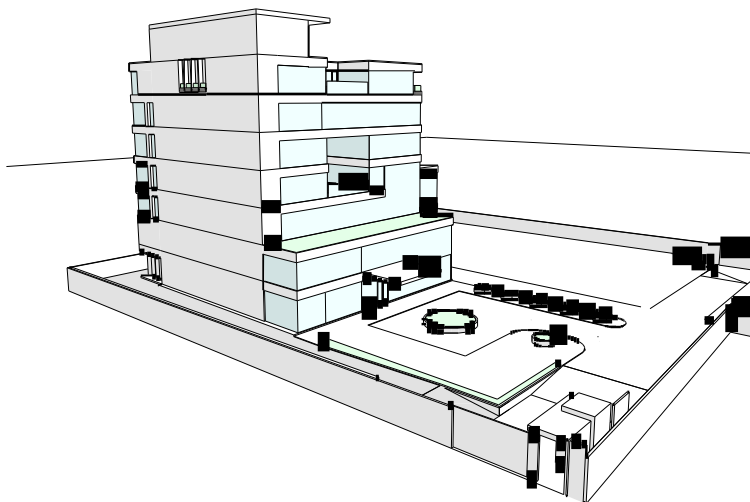
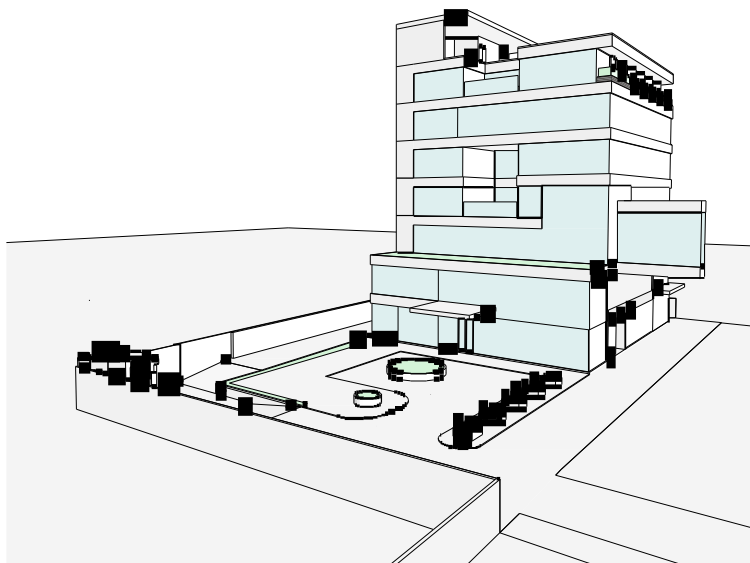
Firm's Role : M&E System Design: Air-conditioning, Ventilating,
Electrical Power, Lighting, Telecommunication, Fire Alarm,
CCTV, Fighting, Waste water treatment, Storm Drainage,

Civil and Structural design



CURRENT PROJECTS

Offices



Project Title : **COSMO OFFICE**

Location : Sukhumvit 97-97/1, Bangkok

Owner : Cosmo Group

Commissioned : 2014 - 2016

Project Summary : 8-storey office building with 2 Basement. Estimated area is 8,00 sq.m.

Construction Cost : 220 million Baht

Firm's Role : M&E System Design: Air-conditioning, Ventilating, Electrical Power, Lighting, Telecommunication, Fire Alarm, CCTV, Access Control, Fire Fighting, Waste water treatment, Storm Drainage, BAS, Security System and Vertical Transportation.

Civil and Structural design



PAST PROJECTS


 Offices


- Project Title : **SIAM COMMERCIAL COMPLEX (PHASE III)**
- Location : Ratchadapisek Rd., Bangkok
- Owner : Mahisorn Co.,Ltd.
- Commissioned : 1995
- Project Summary : Site Area: 104,850 Sq.m. 26-Storey Office Building and Shop.
- Firm's Role : M&E System Design: Air-conditioning, Ventilating, Plumbing, Sanitary, Electrical Power, Lighting, Telecommunications, CCTV, Fire Alarm and Building Automation System.



- Project Title : **SIAM COMMERCIAL BANK (Old Head Quarter)**
- Location : Petchburi Rd., Bangkok
- Owner : Siam Commercial Bank Public Company Limited.
- Commissioned : -
- Project Summary : Office Building.
- Firm's Role : M&E System Design: Air-conditioning, Ventilating, Electrical Power, Lighting, Telecommunication, Fire Alarm, Security and CCTV.



PAST PROJECTS



 Offices
 


- Project Title : **THAI AIRWAY INTERNATIONAL (Head Quarter)**
- Location : Viphavadi-Rangsit Rd., Bangkok
- Owner : Thai Airway International Plc.
- Commissioned : 1987
- Project Summary : Site Area: 23,550 Sq.m., Building Area : 50,000 Sq.m. 23-Storey Office Building.
- Firm's Role : M&E System Design: Air-conditioning, Ventilating, Electrical Power, Lighting, Telecommunication, Fire Alarm, CCTV and Vertical Transportation System.



- Project Title : **SHELL BUILDING (Head Quarter)**
- Location : Bangkok
- Owner : -
- Project Summary : 8-Storey Office Building.
- Firm's Role : M&E System Design: Air-conditioning and Ventilating System.



PAST PROJECTS

Offices



Project Title : **BANK OF ASIA (Head Quarter)**
 Location : Sathorn Road, Bangkok.
 Owner : Asia Property Co., Ltd.
 Commissioned : 1986
 Project Summary : Site Area: 23,000 sq.m., 20-Storey Office Building.
 Firm's Role : M&E System Design: Air-conditioning and Ventilating System.



Project Title : **KRUNGTHAI BANK (Head Quarter)**
 Location : Sukhumvit Rd., Bangkok
 Owner : Krungthai Bank Public Company Limited.
 Commissioned : 1978
 Project Summary : Site Area: 39,000 Sq.m., 15-Storey Office Building.
 Firm's Role : M&E System Design: Air-conditioning, Ventilating, Electrical Power, Lighting, Telecommunication, Fire Alarm and Security System.



PAST PROJECTS

Offices



- Project Title : **ELEPHANT BUILDING**
- Location : Phaholyothin Road, Bangkok.
- Owner : Thammathani Co., Ltd.
- Commissioned : 1996
- Project Summary : Site Area: 130,000 Sq.m., Two 31-Storeys Office Tower, 31-Storeys Condominium.
- Firm's Role : M&E System Design: Air-conditioning, Ventilating, Electrical Power, Lighting, Telecommunication, Fire Alarm, Security, CCTV, Vertical Transportation, Plumbing and Sanitary System.



- Project Title : **MALEENOND TOWER**
- Location : Rama IV Road, Bangkok.
- Owner : M-Tower Co., Ltd.
- Commissioned : 2004
- Project Summary : Building Area 140,000 Sq.m., 36-Stories Building comprises of Studio and Office area
- Construction Cost : est. 2,400 million baht
- Firm's Role : M&E System Design: Air-conditioning, Ventilating, Electrical Power, Lighting, Telecommunication, Fire Alarm, Vertical Transportation, Plumbing, Fire Fighting and Sanitary System.



PAST PROJECTS

Offices



Project Title : **THE NATION TOWER I, II**

Location : Bangna-Trad Road, Bangkok.

Owner : Nation Properties Co., Ltd.

Commissioned : 1994

Project Summary : Site Area: 83,000 Sq.m., 44-Storeys Office Building.

Firm's Role : M&E System Design: Air-conditioning and Ventilating System.



Project Title : **ESSO TOWER (Head Quarter)**

Location : Rama IV road

Owner : Esso Thailand.

Project Summary : 22-Storey Office Building.

Firm's Role : M&E System Design: Air-conditioning, Ventilating, Electrical Power, Lighting, Telecommunication, Fire Alarm, Security, CCTV, Vertical Transportation, Building Automation, Plumbing and Sanitary System.



PAST PROJECTS


 Offices


- Project Title** : **JEWELRY TRADE CENTER**
- Location** : Silom Road, Bangkok.
- Owner** : Jewelry Realty Co., Ltd.
- Commissioned** : 1995
- Project Summary** : Site Area: 150,000 Sq.m., 56-Stories Building.
- Firm's Role** : M&E System Design: Air-conditioning, Ventilating, Electrical Power, Lighting, Telecommunication, Fire Alarm, Vertical Transportation, Security, Plumbing and Sanitary System.
- Associated Firms** : Urban Architects & Associates Co., Ltd.



- Project Title** : **THAI LIFE INSURANCE**
- Location** : Rattana Thibet Rd.
- Owner** : Thai life Insurance
- Commissioned** : 1995
- Project Summary** : 15-Storeys Condominium Tower
- Firm's Role** : M&E System Design: Air-conditioning, Ventilating, Electrical Power, Lighting, Telecommunication, Fire Alarm and Vertical Transportation System.



PAST PROJECTS


 Offices


Project Title : **UNITED CENTER**
 Location : Silom Road, Bangkok.
 Owner : United Center Co., Ltd.
 Commissioned : 1994
 Project Summary : Site Area: 61,900 Sq.m., 50-Storeys Office Building and Shopping Center.
 Firm's Role : M&E System Design: Air-conditioning, Ventilating, Electrical Power, Lighting, Telecommunication, Fire Alarm, CCTV and Vertical Transportation System.



Project Title : **CTI TOWER**
 Location : Ratchadapisek Road, Bangkok.
 Owner : -
 Commissioned : 1993
 Project Summary : 32-Storeys Office Building.
 Firm's Role : M&E System Design: Air-conditioning, Ventilating, Electrical Power, Lighting, Telecommunication, Fire Alarm and Vertical Transportation System.



PAST PROJECTS


 Offices


Project Title : **GRAND AMARIN TOWER**
 Location : New Petchburi Road, Bangkok.
 Owner : Amarin Plaza Group.
 Commissioned : 1993
 Project Summary : Site Area: 49,000 Sq.m., 32-Storeys Office Building.
 Firm's Role : M&E System Design: Air-conditioning, Ventilating, Plumbing, Sanitary, Electrical Power, Lighting, Telecommunication, Fire Alarm, Security, CCTV, Vertical Transportation and BAS System.



Project Title : **WALL STREET TOWER**
 Location : Surawong Road, Bangkok.
 Owner : Wall Street Tower Co., Ltd.
 Commissioned : 1988
 Project Summary : Site Area: 32,000 Sq.m., 29-Storeys Office Tower.
 Firm's Role : M&E System Design: Air-conditioning, Ventilating, Electrical Power, Lighting, Telecommunication, Fire Alarm and Vertical Transportation System.



PAST PROJECTS


 Offices


Project Title : **SIRIPINYO BUILDING**
 Location : Sri Ayudthaya Road, Bangkok.
 Owner : Siripinyo Co., Ltd.
 Commissioned : 1992
 Project Summary : Site Area: 18-Storeys Office Building.
 Firm's Role : M&E System Design: Air-conditioning, Ventilating, Electrical power, Lighting, Telecommunication and Fire Alarm System.



Project Title : **SSP TOWER III**
 Location : Silom Road, Bangkok.
 Owner : Siam Sinthorn Property.
 Commissioned : 1996
 Project Summary : 28-Storeys Office Building.
 Firm's Role : M&E System Design: Air-conditioning, Ventilating, Electrical Power, Lighting, Telecommunication, Fire Alarm, Security, CCTV, Vertical Transportation, Plumbing and Sanitary System.



PAST PROJECTS


 Offices


Project Title : **SAMAGGI TOWER**
 Location : North Park Estate, Bangkok.
 Owner : Samaggi Insurance Co., Ltd.
 Commissioned : 1996
 Project Summary : 20-Storey Office Building.
 Firm's Role : M&E System Design: Air-conditioning, Ventilating,
 Electrical Power, Lighting, Telecommunication,
 Fire Alarm, Security, CCTV, Vertical Transportation,
 Plumbing and Sanitary System.



Project Title : **I.F.C.T. BUILDING**
 Location : New Petchburi Rd., Bangkok
 Owner : The Industrial Finance Corporation of Thailand
 Project Summary : Office building
 Firm's Role : M&E System Design: Air-conditioning, Ventilating
 Electrical Power, Lighting, Telecommunication,
 Fire Alarm, Security, CCTV, Vertical Transportation,
 Plumbing, Fire Fighting and Sanitary System.



PAST PROJECTS



Project Title	: SILOM COMPLEX
Location	: Silom Road, Bangkok.
Owner	: Silom Complex Co., Ltd.
Commissioned	: 1992
Project Summary	: Office Building, Department Stories, and Shopping Center.
Firm's Role	: M&E System Design: Electrical Power, Lighting, Telecommunication, Fire Alarm, Plumbing, and Sanitary System.
Associated Firms	: CASA Co., Ltd.

Offices



Project Title	: UNITED NATION (UN-ESCAP)
Location	: Rachadamnoen-Nork Road, Bangkok.
Owner	: United Nations.
Commissioned	: 1973
Project Summary	: 14-Stories Office Building and 7-Stories Service Building.
Firm's Role	: M&E System Design: Air-conditioning, Ventilating, Electrical
Security and	Power, Lighting, Telecommunication, Fire Alarm,
	Vertical Transportation System.
Associated Firms	: Public Works Department



PAST PROJECTS


 Offices


- Project Title** : **MINISTRY OF FINANCE**
- Location** : Rama VI Road, Bangkok.
- Owner** : Ministry of Finance
- Commissioned** : -
- Project Summary** : est. 50,000 Sq.m.,
- Firm's Role** : M&E System Design:, Electrical Power, Lighting, Telecommunication, Fire Alarm and Security System.
- Associated Firms** : -



- Project Title** : **BANK NOTE PRINTING**
- Location** : Tah Kasem Road, Bangkok.
- Owner** : Bank of Thailand
- Commissioned** : 1978
- Project Summary** : -
- Firm's Role** : M&E System Design: Air-conditioning, Ventilating, Electrical Power, Lighting, Telecommunication, Fire Alarm and Security System.
- Associated Firms** : Duang Taveesak Chaiya and Associates.



PAST PROJECTS



- Project Title** : **LE CONCORDE COMPLEX**
- Location** : Ratchadapisek Road, Bangkok.
- Owner** : Leconcorde Hotel, Toondamrong Co., Ltd.
- Commissioned** : 1997
- Project Summary** : Site Area: 120,000 Sq.m., 400-Room Five Star Hotel, 25-Stories Office Tower.
- Firm's Role** : M&E System Design: Air-conditioning, Ventilating, Electrical Power, Lighting, Telecommunications, Fire Alarm, Security, CCTV, Vertical Transportation, Plumbing and Sanitary System.
- Associated Firms** : Thai Burin Co., Ltd.


 Offices


- Project Title** : **GEMS TOWER**
- Location** : Charoen Krung Road, Bangkok.
- Owner** : Gems Tower Co., Ltd.
- Commissioned** : 1993
- Project Summary** : 44-Stories Office Building.
- Firm's Role** : M&E System Design: Air-conditioning, Ventilating, Electrical Power, Lighting, Telecommunication, Fire Alarm, Sanitary and Plumbing System.
- Associated Firms** : UK Design Co., Ltd.



PAST PROJECTS

Offices



Project Title : **SRIJULSUP TOWER**
 Location : Rama VI Road, Bangkok.
 Owner : Juldis Development Plc.
 Commissioned : 1996
 Project Summary : 22-Storays Office Building.
 Firm's Role : M&E System Design: Air-conditioning, Ventilating, Electrical Power, Lighting, Telecommunication, Fire Alarm and Security System.



Project Title : **BEAUTY GEMS BUILDING**
 Location : Sala-Dang Rd., Bangkok.
 Owner : Beauty Gems Enterprises.
 Commissioned : 1991
 Project Summary : Site Area: 9,000 Sq.m., Office Building.
 Firm's Role : M&E System Design: Air-conditioning, Ventilating System, Electrical Power, Lighting, Telecommunication, Fire Alarm, Security, CCTV, Vertical Transportation, Plumbing and Sanitary System.



PAST PROJECTS


 Offices


- Project Title : **VILLA OFFICES**
- Location : Muagthong Thani Complex, Bangkok.
- Project Summary : Mini Office buildings
- Firm's Role : M&E System Design: Air-conditioning, and Ventilating Electrical Power, Lighting, Telecommunication, Fire Alarm, Security, CCTV, Vertical Transportation, Plumbing, Fire Fighting and Sanitary System.



- Project Title : **THE MALAYSIAN EMBASSY**
- Location : Sathorn Rd., Bangkok.
- Owner : The Malaysian Government.
- Commissioned : 1997
- Project Summary : Site Area: 10,000 Sq.m.
- Firm's Role : M&E System Design: Air-conditioning and Ventilating System.





W. AND ASSOCIATES



PAST PROJECTS



PAST EXPERIENCE

Hotels



W. RETREAT, SAMUI
- M.E.P. -



BANYAN TREE, SAMUI
- M.E.P. -



INTERCONTINENTAL HUA HIN
- M.E.P. -



SHERATON GRANDE LAGOON HUA HIN
- M.E.P. -



LAGUNA BEACH RESORT
(Part of LAGUNA Phuket)
- M.E.P. -

M = Mechanical E = Electrical P = Plumbing



PAST EXPERIENCE

Hotels



DOUBLE TREE by HILTON
M,E,P



MODE SATHORN HOTEL
M,E,P



HILTON SUKHUMVIT BANGKOK
M,E,P



MARIOTT RAYONG
M,E,P

M = Mechanical E = Electrical P = Plumbing



PAST EXPERIENCE

Hotels



BAIYOKE SKY HOTEL
Currently the tallest building in Thailand
- M.E.P. -



GRAND HYATT ERAWAN HOTEL
- M.E. -



TWIN LOTUS HOTEL
- M.E.P. -



HOLIDAY INN CHIANG MAI
- M.E.P. -



WESTIN GRANDE SUKHUMVIT
- M. -



SIAM CITY HOTEL
- M.E. -



INDEPENDENCE HOTEL CAMBODIA
- M.E.P. -



FOUR SEASONS HOTEL
- M.E. -



J.W. MARRIOTT HOTEL
(Ploenchit Center)
- M. -



SOL TWIN TOWERS
- M.E. -



METROPOLE HOTEL, PHUKET
- M.E.P. -

M = Mechanical E = Electrical P = Plumbing



PAST EXPERIENCE

Hotels



MANDARIN ORIENTAL The Renovation
Back of House, Main Lobby



HOLIDAY INN PATTAYA
- M.E.P. -



S31 HOTEL
- M.E.P. -



HOTEL PLAZA ATHENEES
- M.E.P. -



LE MERIDIEN BANGKOK
- M.E.P. -



MERCURE AMBASSADOR HOTEL
(Renovation)
- M.E.P. -



HOLIDAY INN REGENT BEACH CHA-AM (Renovation)
- M.E.P. -



FISHERMAN'S VILLAGE
- E. -



DUSIT AND RESORT HOTEL
- M.E.P. -



SHERATON GRAND LAGOON
(Rebranded to ANGSANA)



SALA-SAMUI RESORTS
- M.E.P. -



BAAN BORAN CHIANG SAEN
(ANANTARA GOLDEN TRIANGLE)

M = Mechanical E = Electrical P = Plumbing



PAST EXPERIENCE

Residential



SILVER BEACH CONDOMINIUM
- E -



CITY LAKE CONDOMINIUM
- M.E. -



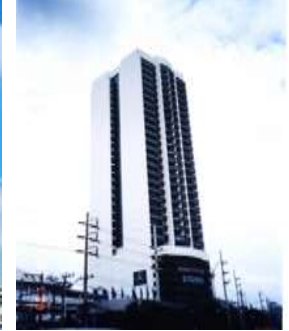
LA CASCADE
- E -



SATHORN GARDEN
- M -



ROYAL CHAROENKRUNG
- M.E. -



LUMPINI PARK VIEW
- M.E.P. -



PARK BEACH CONDOMINIUM
- E -



SKY BEACH CONDOMINIUM
- E -



JOMTIEN COMPLEX
- E -



CENTRAL BANGNA (East Tower)
- M.E.P. -



COCONUT BEACH CONDOMINIUM
- M.E.P. -



THE PRESIDENT PARK
- M.E. -

M = Mechanical E = Electrical P = Plumbing



PAST EXPERIENCE

Residential



SATHORN PARK PLACE
- M.E.P -



TRIDHOS CITY MARINA
- M.E.P -



INTRO BY RASA Condominium
- M.E.P -



BANGKOK RIVER PARK
- M.E.P -



VILLA RACHATEWI
- M.E.P -



METRO JOMTIEN CONDOTEL
- M.E.P -



PARKLAND PHASE II
- M.E.P -



THANA CITY



BAAN MON-CHALE
- M.E.P -

M = Mechanical E = Electrical P = Plumbing



PAST EXPERIENCE

Residential



MODE SUKHUMVIT 61
-M,E,P-



VILLA ASOKE
-M,E,P-



VERTIQ CONDOMINIUM
-M,E,P-



VIA BOTANI
-M,E,P-



URBANO SATHORN
-M,E,P-



THE AXIS CONDOMINIUM
-M,E,P-



KHAO-YAI RESIDENCE
-M,E,P-

M = Mechanical E = Electrical P = Plumbing





PAST EXPERIENCE

Offices



MALEENOND TOWER
(Channel 3 TV Studio)
- M,E,P -



ESSO BUILDING



GRAND AMARIN TOWER
- M,E,P -



UNITED CENTER
- M,E -



C.T.I TOWER
- M,E -



JEWELRY TRADE CENTER
- M,E,P -



S.S.P TOWER III
- M,E,P -



SRIJULSUP TOWER
- M,E -



THE NATION TOWER I, II
- M -



SIRIPINYO BUILDING
- M,E -



WALL STREET TOWER
- M,E -



GEMS TOWER
- M,E,P -

M = Mechanical E = Electrical P = Plumbing



PAST EXPERIENCE

Offices



ELEPHANT BUILDING
- M,E,P -



BEAUTY GEMS BUILDING
- M,E -



VILLA OFFICE
- M,E,P -



MALAYSIAN EMBASSY
- M -



THAI LIFE INSURANCE



MINISTRY OF FINANCE
- E -



MINISTRY OF FOREIGN AFFAIR
- M -



UNITED NATION - ESCAP
- M,E -



BANK NOTE PRINTING
- M,E -



METROPOLITAN ELECTRICITY
AUTHORITY, BANGKOK
- M -



PRIVY COUNCIL OFFICE
- M,E,P -



LECONCORDE COMPLEX
- M,E,P -



PARLIAMENT BUILDING (OFFICE)
- M,E,P -

M = Mechanical E = Electrical P = Plumbing



PAST EXPERIENCE

Corporate Offices



SIAM COMMERCIAL COMPLEX (PHASE III)
- M.E.P. -



SIAM COMMERCIAL BANK
(Old Head Quarter)



THAI AIRWAY INTERNATIONAL (Head Quarter)
- M.E. -



SHELL HEAD OFFICE
- M -



SAMAGGI TOWER
- M.E.P. -



BANK OF ASIA
(Head Quarter)
- M -



KRUNGTHAI BANK
(Head Quarter)
- M.E. -



IFCT BUILDING
- M.E. -

M = Mechanical E = Electrical P = Plumbing



PAST EXPERIENCE

Retails



CENTRAL PLAZA CHIANG-RAI
- M,E,P -



ASIATIQUE the river front
- M,E,P -



RAIN HILL
- M,E,P -



THE VUE
- M,E,P -



PORTO CHINO
- M,E,P -



BIG C Super Center
- M,E,P -



CENTRAL TOWN CENTER RATTANATHIBET
- M,E,P -



CENTRAL PLAZA SURATTHANI
- M,E,P -



CENTRAL PLAZA PINKLAO (The Renovation)
- M,E,P -

M = Mechanical E = Electrical P = Plumbing



PAST EXPERIENCE

Retails



AMARIN PLAZA
-M,E-



BANGRAK PLAZA
-M-



THE ERAWAN BANGKOK
-M,E,P-



SILOM COMPLEX
-E,P-



RAJADAMRI ARCADE
-M,E-



SORAYA SHOPPING, PHNOM PENH
-M,E,P-



GOLDEN CITY SHOPPING CENTER
PHNOM PENH



LAKSI PLAZA
-M,E-

M = Mechanical E = Electrical P = Plumbing



PAST EXPERIENCE

Health Cares



SRINAKARIN HOSPITAL
-M,E,P-



KHONKAEN HOSPITAL
-M,E,P-



BUA YAI HOSPITAL
-M,E,P-



RATNIN EYE HOSPITAL
-M,E,P-



KALASIN HOSPITAL
-M,E,P-



BLOOD CENTER
THAI RED CROSS SOCIETY
-M,E,P-



SIRIRAJ HOSPITAL
Laboratory and IT studies for medical student
-M,E,P-

M = Mechanical E = Electrical P = Plumbing



PAST EXPERIENCE

Health Cares



PATANA MEDICAL CENTER
-M,E,P-



SONGLANAKARIN HOSPITAL
-M,E,P-

M = Mechanical E = Electrical P = Plumbing



PAST EXPERIENCE

Educations / Gym / Master plan



- THAMMASAT UNIVERSITY**
(Rangsit Campus)
- Main Admission Office Building
 - Lecture Building I
 - Lecture Building III
 - Lecture Building IV
 - Faculty of Engineering Building (Int.)
 - Library Building (Bangkok campus)
 - Laboratories
 - Multi-Purpose Building (Bangkok campus)



MAEFAH-LUANG UNIVERSITY
Education Buildings
- M.E.P -



Phaholyothin Site



Makkasan Site



AUDITORIUM
Khon Khaen University
- M.E -



THAMMASAT UNIVERSITY LIBRARY
- M -



BANGKOK UNIVERSITY ART GALLERY
- M.E.P -

STATE RAILWAY OF THAILAND
The Master Plan for Land Use



GYMNESIUM, 13th ASIAN GAME
- M -



HUAMARK STADIUM
- E -

M = Mechanical E = Electrical P = Plumbing

